

Thank you for selecting Schneider Electric AvatarOn series products. Read this instruction carefully before installing and using this product.

The installation instruction is applicable for the following models.

(Note: _WE / WG / GH / LW / WD / ST, etc. The model suffix represents the appearance color code.)

Cat. No.: E8331RD250
Description: 250 W Dimmer

Product Specifications

Rated voltage: 220-240 V~ Product standard: IEC 60669-2-1

Installation center distance: 60.3 mm

Rated Load:

Incandescent lamp or high voltage halogen lamp: 50-250 W

Low voltage halogen lamp with dimmable electronic transformer: 50-250 VA

Dimmable LED: 3-100 VA

⚠️ ⚠️ DANGER

HAZARD OF ELECTRIC SHOCK, EXPLOSION OR ARC FLASH

- This product must only be installed and serviced by appropriately qualified or licenced electrical personnel.
- Isolate the electrical supply before doing any work on this product.
- Ensure that the product has been correctly installed and tested for safe operation before reconnecting the electrical supply.

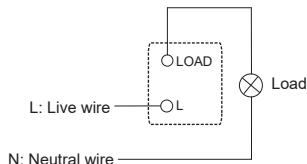
Failure to follow these instructions will result in death or serious injury.

NOTE:

1. The product shall be installed by qualified electrician.
2. Check local wiring regulations before installation.
3. Leave the film on to prevent damage during product installation.
4. Apply IEC60898-1 compliant 250V 6A type C MCB as overload protection.
5. There might be flashing in the case of low luminous intensity when the dimmer corresponds to different models of dimmable LED.
6. Remove the film on product surface when the room is clean. Before cleaning the product, disconnect the power and wipe the dust or dirt on the surface with a slightly wet cloth or paper towel. Use only diluted detergent but not corrosive chemicals to clean the product.

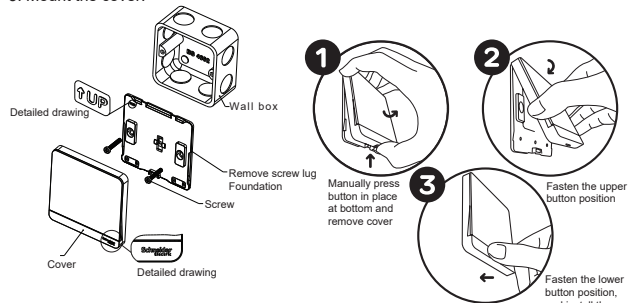
7. This dimmer should not connect to coil winding load, such as magnetic transformer, inductive ballast and motor. Incorrect connection may result in product damage.
8. When connecting LED load, it is recommended to use the loads with the same brand and the same model, and the total load shall not exceed the rated value.

Wiring Diagram



Installation Guidelines

1. Screw the wire into the terminal (recommended stripping length of 12-15 mm).
2. Screw the grid plate to the wall box.
3. Mount the cover.



NOTE: If your installation uses a four lug metal wall box, remove the top and bottom lugs or bend fully back.

For product enquiries, visit: www.schneider-electric.com/contact

多謝閣下選用Schneider Electric施耐德電氣AvatarOn繹尚系列產品。在安裝及使用本產品前，請仔細閱讀內文指示。

此安裝說明適用於以下產品型號。

(註：型號後綴_WE / WG / GH / LW / WD / ST等，僅代表外觀顏色代號。)

型號	摘要
E8331RD250	250 W 光暗掣
產品規格	

額定電壓：220-240 V~ 產品標準：IEC 60669-2-1

安裝中心距離：60.3 mm

額定負載：白熾燈或高壓鹵素燈：50-250 W

帶可調電子變壓器的低壓鹵素燈：50-250 VA

可調光LED：3-100 VA

⚠️ ⚠️ 危險

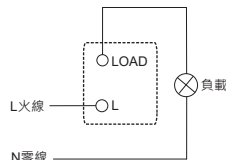
電擊、爆炸或電弧危險警告

- 本產品須由合格認可的電氣技工安裝及維修。
 - 對本產品進行任何工作之前請斷開電源。
 - 重新連接電源之前請確保產品已正確安裝和測試操作安全。
- 不遵守以上說明將可能導致死亡或嚴重傷害。**

注意事項

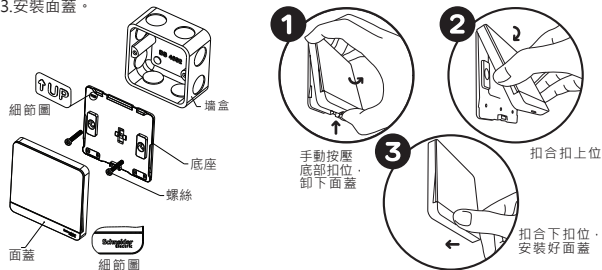
1. 產品安裝須由符合資格的電工完成。
2. 安裝前請查核是否符合當地之有關布線規例。
3. 產品安裝期間，請妥善放置與保管面蓋，以防壓傷損壞。
4. 請選用符合IEC 60898-1標準要求的250V 6A type C MCB作為過載保護。
5. 當調光開關應用不同型號可調光LED，有可能在調光時出現閃爍。
6. 表面透明薄膜在室內清潔之後才能撕掉，清潔時，切記先關上電源，再用輕微濕潤的軟性布料或紙巾抹拭表面的塵埃或髒污，必要時可用極為稀釋的清潔劑，但請勿使用含有腐蝕性的化學溶液。
7. 本產品不適用於帶線圈類負載，例如磁性變壓器，磁性電感，電機等。錯誤連接將可能導致產品損壞。
8. 當連接LED負載時，建議使用同品牌型號的負載，總負載不超過額定值。

接線圖



安裝指南

1. 把電線插入接線端子 (建議剝線長度12-15 mm)，然後鎖緊螺絲以固定。
2. 把產品固定於底盒。
3. 安裝面蓋。



注意：如果您的安裝使用四孔牆盒，請把頂部和底部的螺絲孔或凸耳卸下或彎曲。如果您有技術方面的問題，請聯繫當地客服中心：www.schneider-electric.com/contact