

**Popular Combinations:** Inlet pressure 10 bar (145 psig), Secondary pressure 6.3 bar (91.3 psig), 1 bar (14.5 psig) pressure drop.



**Filter + Regulator + Lubricator Combinations, Poly bowl**  
5 micron element, 8 bar (116 psig) regulator + gauge and wall mounting brackets



| Port size | Flow               | Manual drain           | Weight             | Auto drain             | Weight             |
|-----------|--------------------|------------------------|--------------------|------------------------|--------------------|
| 1/4"      | 20 dm³/s 42 (scfm) | <b>P32CB12GEMNGLNW</b> | 1.29 kg (2.84 lbs) | <b>P32CB12GEANGLNW</b> | 1.29 kg (2.84 lbs) |
| 3/8"      | 32 dm³/s 68 (scfm) | <b>P32CB13GEMNGLNW</b> | 1.29 kg (2.84 lbs) | <b>P32CB13GEANGLNW</b> | 1.29 kg (2.84 lbs) |
| 1/2"      | 40 dm³/s 85 (scfm) | <b>P32CB14GEMNGLNW</b> | 1.29 kg (2.84 lbs) | <b>P32CB14GEANGLNW</b> | 1.29 kg (2.84 lbs) |



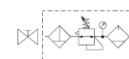
**Filter/Regulator + Lubricator Combinations, Poly bowl**  
5 micron element, 8 bar (116 psig) regulator + gauge and wall mounting brackets



| Port size | Flow               | Manual drain           | Weight             | Auto drain             | Weight             |
|-----------|--------------------|------------------------|--------------------|------------------------|--------------------|
| 1/4"      | 22 dm³/s 45 (scfm) | <b>P32CA12GEMNGLNW</b> | 1.03 kg (2.27 lbs) | <b>P32CA12GEANGLNW</b> | 1.03 kg (2.27 lbs) |
| 3/8"      | 33 dm³/s 70 (scfm) | <b>P32CA13GEMNGLNW</b> | 1.03 kg (2.27 lbs) | <b>P32CA13GEANGLNW</b> | 1.03 kg (2.27 lbs) |
| 1/2"      | 43 dm³/s 90 (scfm) | <b>P32CA14GEMNGLNW</b> | 1.03 kg (2.27 lbs) | <b>P32CA14GEANGLNW</b> | 1.03 kg (2.27 lbs) |



**Ball Valve + Filter/Regulator + Lubricator Combinations, Poly bowl**  
5 micron element, 8 bar (116 psig) regulator + gauge and wall mounting brackets



| Port size | Flow               | Manual drain           | Weight             | Auto drain             | Weight             |
|-----------|--------------------|------------------------|--------------------|------------------------|--------------------|
| 3/8"      | 33 dm³/s 70 (scfm) | <b>P32QA13GEMNGLNW</b> | 1.03 kg (2.27 lbs) | <b>P32QA13GEANGLNW</b> | 1.03 kg (2.27 lbs) |
| 1/2"      | 43 dm³/s 90 (scfm) | <b>P32QA14GEMNGLNW</b> | 1.03 kg (2.27 lbs) | <b>P32QA14GEANGLNW</b> | 1.03 kg (2.27 lbs) |



**Ball Valve + Filter/Regulator Combinations + Poly bowl**  
5 micron element, 8 bar Regulator + Gauge and Wall Mounting Brackets



| Port size | Flow               | Manual drain         | Weight            | Auto drain           | Weight            |
|-----------|--------------------|----------------------|-------------------|----------------------|-------------------|
| 3/8"      | 33 dm³/s 70 (scfm) | <b>P32QN13GEMNGW</b> | 1.1 kg (2.42 lbs) | <b>P32QN13GEANGW</b> | 1.1 kg (2.42 lbs) |
| 1/2"      | 43 dm³/s 90 (scfm) | <b>P32QN14GEMNGW</b> | 1.1 kg (2.42 lbs) | <b>P32QN14GEANGW</b> | 1.1 kg (2.42 lbs) |

|  |  |  |  |  |          |   |          |   |           |                                      |  |
|--|--|--|--|--|----------|---|----------|---|-----------|--------------------------------------|--|
| <b>P 3 2</b>   |  |  |  |  | <b>E</b> |   | <b>N</b> |   | <b>LN</b> | <b>W</b>                             |  |
| <b>Combination</b><br>Combination <b>C</b><br>Shut off + Combination <sup>1</sup> <b>Q</b> |  | <b>Thread type</b><br>BSP 1<br>NPT 9   |  | <b>Port size</b><br>1/4 2<br>3/8 3<br>1/2 4  |          | <b>Drain type</b><br>Auto drain <b>A</b><br>Manual drain <b>M</b> |          | <b>Adjustment range</b><br><b>With round gauge</b><br>0-2 bar; 0-30 psi; 0.2 MPa <b>Z</b><br>4 bar; 60 psi; 0.4 MPa <b>M</b><br>8 bar; 125 psi; 0.8 MPa <b>G</b><br><b>Without gauge</b><br>2 bar Y<br>4 bar L<br>8 bar N<br>17 bar H |           | Add only for options with Lubricator |  |
| <b>Combination type</b><br>F/R+L <b>A</b><br>F+R+L <b>B</b><br>F/R <b>N</b>                |  | <b>Bowl type</b><br>Poly bowl with bowl guard <b>G</b><br>Metal bowl with sight glass <b>S</b> |  | <p><b>Note:</b> All bowl types are the same for each component</p> <p><b>Example:</b> If a "G" is specified for a F+L, both units would get a poly bowl with bowl guard.</p> |          |   |          |   |           |                                      |  |

<sup>1</sup> Option not available with F+R+L and 1/4" port size (2)