

Datasheet

Heat Install Brass Inserts



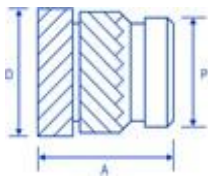
Flange



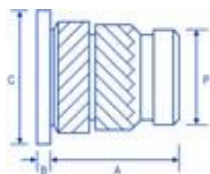
Flush

- The inserts have an opposing herringbone knurl on the outside to give a high level of performance in most Thermoplastics.
- Available in Flush or Flange (headed)
- To be installed into drilled or moulded holes using either direct heat or ultrasonic.
- Designed with a pilot end to aid insertion
- High torque & pull out, suitable for thin boss walls to maximise design space.
- The Flange/headed version to be used for electrical contact and higher performance.

See our full listings with dimensions below



Stock No		Thread	A	D	P	Hole Size	Wall Thickness
INSHB103	Flush	M3	5.7	4.6	3.9	4.0	1.6
INSHB1035	Flush	M3.5	7.1	5.4	4.7	4.8	1.8
INSHB104	Flush	M4	8.2	6.3	5.5	5.6	2.1
INSHB105	Flush	M5	9.5	7.1	6.3	6.4	2.6
INSHB106	Flush	M6	12.7	8.7	7.9	8.0	3.3



Stock No		Thread	A	B	C	P	Hole Size	Wall Thickness
INSHB203	Flange	M3	5.7	0.61	5.5	3.9	4.0	1.6
INSHB204	Flange	M4	8.2	0.91	7.1	5.5	5.6	2.1
INSHB205	Flange	M5	9.5	1.09	7.9	6.3	6.4	2.6
INSHB206	Flange	M6	12.7	1.35	9.5	7.9	8.0	3.3