

**Robert Bosch Power Tools GmbH**  
70538 Stuttgart  
GERMANY

[www.bosch-pt.com](http://www.bosch-pt.com)

**1 609 92A 39U** (2015.12) PS / 50



1 609 92A 39U

## GBL 18V-120 Professional

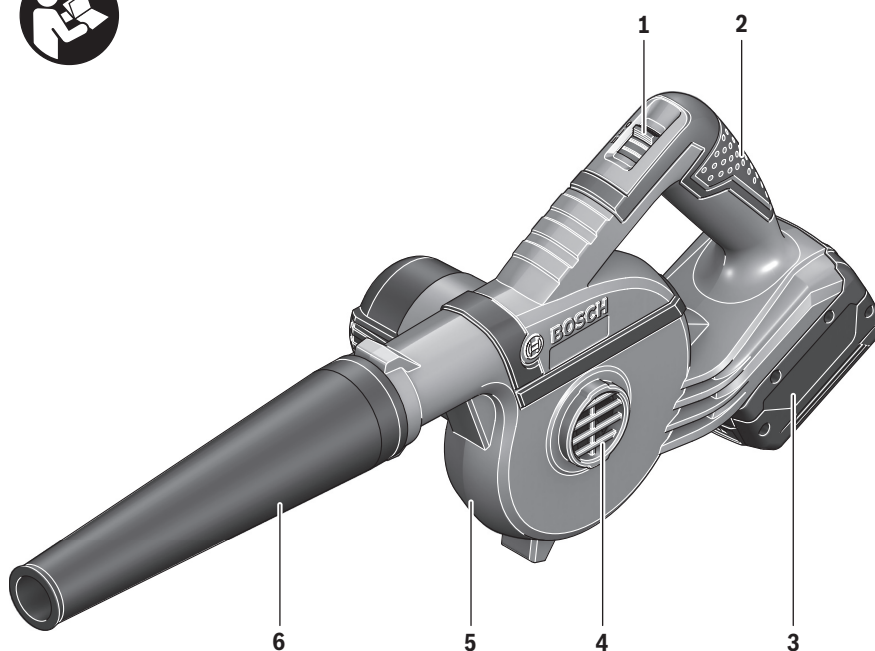


**en** Original instructions  
**fr** Notice originale  
**pt** Manual original  
**cn** 正本使用说明书  
**tw** 原始使用說明書  
**ko** 사용 설명서 원본  
**th** หนังสือคู่มือการใช้งานฉบับต้นแบบ

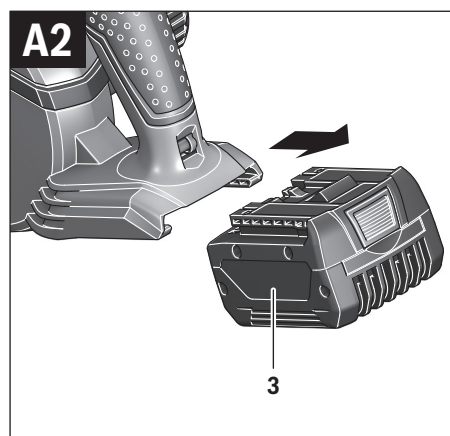
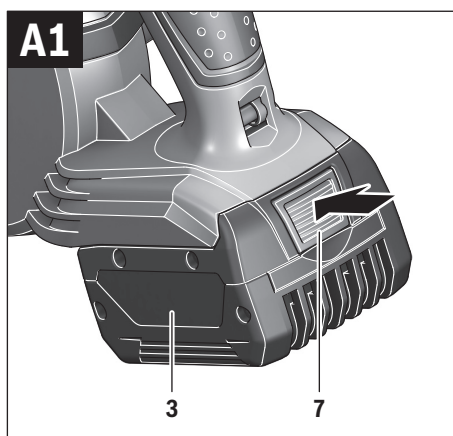
**id** Petunjuk-Petunjuk untuk Penggunaan Orisinal  
**vi** Bản gốc hướng dẫn sử dụng  
**ar** تعليمات التشغيل الأصلية  
**fa** دفترچه راهنمای اصلی



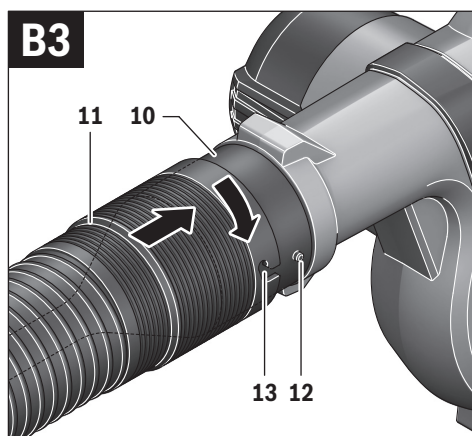
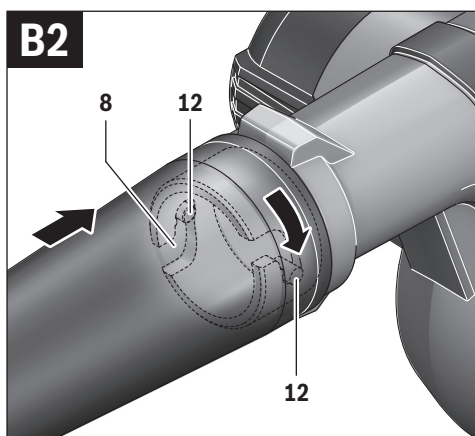
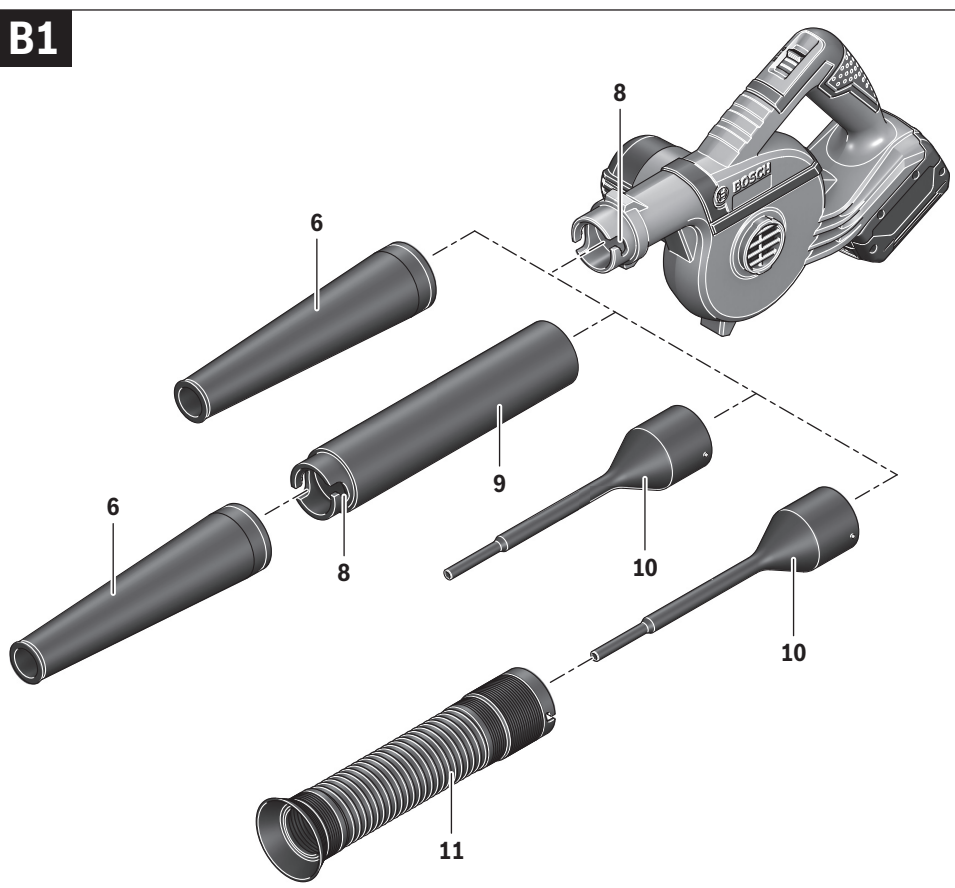
English .....	Page 5
Français .....	Page 10
Português .....	Página 14
中文 .....	页 17
中文 .....	頁 21
한국어 .....	페이지 24
ภาษาไทย .....	หน้า 28
Bahasa Indonesia .....	Halaman 32
Tiếng Việt .....	Trang 36
عربي .....	صفحة 44
فارسی .....	صفحه 48



**GBL 18V-120**



4 |



## English

### Safety Notes

#### General Power Tool Safety Warnings

**⚠ WARNING** Read all safety warnings and all instructions. Failure to follow the warnings and instructions may result in electric shock, fire and/or serious injury.

#### Save all warnings and instructions for future reference.

The term "power tool" in the warnings refers to your mains-operated (corded) power tool or battery-operated (cordless) power tool.

#### Work area safety

- ▶ **Keep work area clean and well lit.** Cluttered or dark areas invite accidents.
- ▶ **Do not operate power tools in explosive atmospheres, such as in the presence of flammable liquids, gases or dust.** Power tools create sparks which may ignite the dust or fumes.
- ▶ **Keep children and bystanders away while operating a power tool.** Distractions can cause you to lose control.

#### Electrical safety

- ▶ **Power tool plugs must match the outlet. Never modify the plug in any way. Do not use any adapter plugs with earthed (grounded) power tools.** Unmodified plugs and matching outlets will reduce risk of electric shock.
- ▶ **Avoid body contact with earthed or grounded surfaces, such as pipes, radiators, ranges and refrigerators.** There is an increased risk of electric shock if your body is earthed or grounded.
- ▶ **Do not expose power tools to rain or wet conditions.** Water entering a power tool will increase the risk of electric shock.
- ▶ **Do not abuse the cord. Never use the cord for carrying, pulling or unplugging the power tool. Keep cord away from heat, oil, sharp edges and moving parts.** Damaged or entangled cords increase the risk of electric shock.
- ▶ **When operating a power tool outdoors, use an extension cord suitable for outdoor use.** Use of a cord suitable for outdoor use reduces the risk of electric shock.
- ▶ **If operating a power tool in a damp location is unavoidable, use a residual current device (RCD) protected supply.** Use of an RCD reduces the risk of electric shock.

#### Personal safety

- ▶ **Stay alert, watch what you are doing and use common sense when operating a power tool. Do not use a power tool while you are tired or under the influence of drugs, alcohol or medication.** A moment of inattention while operating power tools may result in serious personal injury.
- ▶ **Use personal protective equipment. Always wear eye protection.** Protective equipment such as dust mask, non-skid safety shoes, hard hat, or hearing protection

used for appropriate conditions will reduce personal injuries.

- ▶ **Prevent unintentional starting. Ensure the switch is in the off-position before connecting to power source and/or battery pack, picking up or carrying the tool.** Carrying power tools with your finger on the switch or energising power tools that have the switch on invites accidents.
- ▶ **Remove any adjusting key or wrench before turning the power tool on.** A wrench or a key left attached to a rotating part of the power tool may result in personal injury.
- ▶ **Do not overreach. Keep proper footing and balance at all times.** This enables better control of the power tool in unexpected situations.
- ▶ **Dress properly. Do not wear loose clothing or jewellery. Keep your hair, clothing and gloves away from moving parts.** Loose clothes, jewellery or long hair can be caught in moving parts.
- ▶ **If devices are provided for the connection of dust extraction and collection facilities, ensure these are connected and properly used.** Use of dust collection can reduce dust-related hazards.

#### Power tool use and care

- ▶ **Do not force the power tool. Use the correct power tool for your application.** The correct power tool will do the job better and safer at the rate for which it was designed.
- ▶ **Do not use the power tool if the switch does not turn it on and off.** Any power tool that cannot be controlled with the switch is dangerous and must be repaired.
- ▶ **Disconnect the plug from the power source and/or the battery pack from the power tool before making any adjustments, changing accessories, or storing power tools.** Such preventive safety measures reduce the risk of starting the power tool accidentally.
- ▶ **Store idle power tools out of the reach of children and do not allow persons unfamiliar with the power tool or these instructions to operate the power tool.** Power tools are dangerous in the hands of untrained users.
- ▶ **Maintain power tools. Check for misalignment or binding of moving parts, breakage of parts and any other condition that may affect the power tool's operation. If damaged, have the power tool repaired before use.** Many accidents are caused by poorly maintained power tools.
- ▶ **Keep cutting tools sharp and clean.** Properly maintained cutting tools with sharp cutting edges are less likely to bind and are easier to control.
- ▶ **Use the power tool, accessories and tool bits etc. in accordance with these instructions, taking into account the working conditions and the work to be performed.** Use of the power tool for operations different from those intended could result in a hazardous situation.

#### Battery tool use and care

- ▶ **Recharge only with the charger specified by the manufacturer.** A charger that is suitable for one type of battery

## 6 | English

pack may create a risk of fire when used with another battery pack.

- ▶ **Use power tools only with specifically designated battery packs.** Use of any other battery packs may create a risk of injury and fire.
- ▶ **When battery pack is not in use, keep it away from other metal objects, like paper clips, coins, keys, nails, screws or other small metal objects, that can make a connection from one terminal to another.** Shorting the battery terminals together may cause burns or a fire.
- ▶ **Under abusive conditions, liquid may be ejected from the battery; avoid contact. If contact accidentally occurs, flush with water. If liquid contacts eyes, additionally seek medical help.** Liquid ejected from the battery may cause irritation or burns.

#### Service

- ▶ **Have your power tool serviced by a qualified repair person using only identical replacement parts.** This will ensure that the safety of the power tool is maintained.

#### Safety Warnings for Cordless Blowers

- ▶ **Make sure that bystanders are not injured by foreign objects being hurled away.**
- ▶ **Keep your fingers away from the openings of the power tool during operation. Operate the blower only with a nozzle attached.** The rotating fan can injure you.
- ▶ **Do not blow together any harmful substances, e.g. beech or oak wood dust, rock dust or asbestos.** These substances are considered carcinogenic.
- ▶ **Do not blow together any liquids.** The penetration of liquids increases the risk of an electric shock.
- ▶ **Keep the power tool away from rain or moisture.** The penetration of water into the motor increases the risk of an electric shock.
- ▶ **Provide for good ventilation at the working place.**
- ▶ **Wear additional personal protective equipment, such as safety goggles and respirator.** Wearing protective equipment for appropriate conditions reduces the exposure toward hazardous substances.



- ▶ **Do not open the battery.** Danger of short-circuiting.



**Protect the battery against heat, e. g., against continuous intense sunlight, fire, water, and moisture.** Danger of explosion.

- ▶ **In case of damage and improper use of the battery, vapours may be emitted. Ventilate the area and seek medical help in case of complaints.** The vapours can irritate the respiratory system.
- ▶ **Use the battery only together with your Bosch product.** This is the only way to protect the battery against dangerous overload.

- ▶ **The battery can be damaged by pointed objects such as nails or screwdrivers or by force applied externally.** An internal short circuit can occur and the battery can burn, smoke, explode or overheat.

## Product Description and Specifications



**Read all safety warnings and all instructions.** Failure to follow the warnings and instructions may result in electric shock, fire and/or serious injury.

#### Intended Use

The power tool is intended for blowing together non-harmful substances (e.g. sawing chips, metal chips, stone dust, etc.) produced during sawing, drilling or grinding. Bore holes can also be blown out with suitable accessories.

The power tool is not suitable for blowing together hot, flammable or explosive materials.

#### Product Features

The numbering of the product features refers to the illustration of the machine on the graphics page.

- 1 On/Off switch with stage selector
- 2 Handle
- 3 Battery pack\*
- 4 Air intake
- 5 Motor housing
- 6 Nozzle
- 7 Battery unlocking button
- 8 Notch for accessory connection
- 9 Extension tube
- 10 Bore hole nozzle
- 11 Dust collection tube
- 12 Bayonet lock
- 13 Notch for dust collection tube

\*Accessories shown or described are not part of the standard delivery scope of the product. A complete overview of accessories can be found in our accessories program.

#### Technical Data

Cordless blower		GBL 18V-120
Article number		3 601 JF5 1..
No-load speed	min <sup>-1</sup>	17000
Air speed, max.	m/s	75
Air volume	m <sup>3</sup> /min	2.0
Weight according to EPTA-Procedure 01:2014	kg	1.4/1.68 <sup>1)</sup>
Technical data determined with battery from delivery scope.		
1) depending on the battery pack being used		
2) Limited performance at temperatures < 0 °C		

Cordless blower		GBL 18V-120
Permitted ambient temperature	°C	0 ... +45
– during charging		
– during operation <sup>2)</sup> and during storage	°C	–20 ... +50
Recommended batteries		GBA 18V.. GBA 18V... W
Recommended chargers		AL 18.. GAL 3680
Recommended chargers for wireless charging batteries		GAL 18... W
Operating duration per battery-pack charge		
– Blower level I	min/Ah	9
– Blower level II	min/Ah	5
Technical data determined with battery from delivery scope.		
1) depending on the battery pack being used		
2) Limited performance at temperatures < 0 °C		

## Assembly

### Battery Charging

- **Use only the battery chargers listed on the accessories page.** Only these battery chargers are matched to the lithium-ion battery of your power tool.

**Note:** The battery supplied is partially charged. To ensure full capacity of the battery, completely charge the battery in the battery charger before using your power tool for the first time.

The battery must be removed from the power tool to charge it. The lithium-ion battery can be charged at any time without reducing its service life. Interrupting the charging procedure does not damage the battery.

The “Electronic Cell Protection (ECP)” protects the lithium-ion battery against deep discharging. When the battery is discharged, the power tool is switched off by a protective circuit.

- **Do not continue to press the On/Off switch after the machine has been automatically switched off.** The battery can be damaged.

The battery is equipped with a NTC temperature control which allows charging only within a temperature range of between 0 °C and 45 °C. A long battery service life is achieved in this manner.

A significantly reduced working period after charging indicates that the battery is used and must be replaced.

Observe the notes for disposal.

### Removing the battery (see figures A1 – A2)

The battery **3** is equipped with two locking levels that should prevent the battery from falling out when pushing the battery unlocking button **7** unintentionally. As long as the battery is inserted in the power tool, it is held in position by means of a spring.

- To remove the battery **3**, press the unlocking buttons **7** and pull the battery out of the machine to the rear. **Do not exert any force.**

## Mounting the Blower Accessories (see figures B1 – B3)

- **Remove the battery before cleaning or performing maintenance on the blower, making tool adjustments, changing accessories or storing the blower.** This safety measure prevents the blower from being started accidentally.

See the illustration for the ways of combining the different blower accessories.

- Insert the bayonet lock **12** of the accessory firmly into the notches **8** of the motor housing or into the notches **8** of the extension tube **9**.
- Turn the bayonet lock a quarter turn clockwise.

### Mounting the Dust Collection Tube

When blowing out bore holes, the drilling debris is blown in the direction of the operator. For this reason, it is recommended that you mount the dust collection tube **11** over the bore hole nozzle **10**.

- Place the notches **13** of the dust collection tube **11** over the outer bayonet lock **12** of the bore hole nozzle **10**.
- Turn the dust collection tube **11** a quarter turn clockwise.

## Operation

- **Remove the battery before cleaning or performing maintenance on the blower, making tool adjustments, changing accessories or storing the blower.** This safety measure prevents the blower from being started accidentally.

### Starting Operation

#### Switching On and Off

To save energy, only switch the power tool on when using it.

- To **switch on** the power tool, press the On/Off switch **1** to position **I** or **II**.  
Position **I**: Blowing together light materials.  
Position **II**: Blowing together heavy materials.
- To **switch off**, push the On/Off switch **1** to the stop in position **“0”**.

### Working Advice

Never blow dirt in the direction of bystanders.

Always hold the power tool approx. 3 cm above ground when working.

Do not blow hot, flammable or explosive material.

During “blowing” operation, take care that no debris/impurities can be drawn into the air intake **4**.

## Maintenance and Service

### Maintenance and Cleaning

- **Remove the battery before cleaning or performing maintenance on the blower, making tool adjustments, changing accessories or storing the blower.** This safety measure prevents the blower from being started accidentally.

## 8 | English

- **For safe and proper working, always keep the machine and ventilation slots clean.**

### After-sales Service and Application Service

Our after-sales service responds to your questions concerning maintenance and repair of your product as well as spare parts. Exploded views and information on spare parts can also be found under:

#### **www.bosch-pt.com**

Bosch's application service team will gladly answer questions concerning our products and their accessories.

In all correspondence and spare parts orders, please always include the 10-digit article number given on the nameplate of the product.

### People's Republic of China

#### **China Mainland**

Bosch Power Tools (China) Co., Ltd.

567, Bin Kang Road

Bin Jiang District 310052

Hangzhou, P. R. China

Service Hotline: 4008268484

Fax: (0571) 87774502

E-Mail: [contact.ptcn@cn.bosch.com](mailto:contact.ptcn@cn.bosch.com)

[www.bosch-pt.com.cn](http://www.bosch-pt.com.cn)

### HK and Macau Special Administrative Regions

Robert Bosch Hong Kong Co. Ltd.

21st Floor, 625 King's Road

North Point, Hong Kong

Customer Service Hotline: +852 2101 0235

Fax: +852 2590 9762

E-Mail: [info@hk.bosch.com](mailto:info@hk.bosch.com)

[www.bosch-pt.com.hk](http://www.bosch-pt.com.hk)

### Indonesia

PT Robert Bosch

Palma Tower 10<sup>th</sup> Floor

Jl. RA Kartini II-S Kaveling 6 Sek II

Pondok Pinang, Kebayoran Lama

Jakarta Selatan 12310

Indonesia

Tel.: (021) 3005 5800

Fax: (021) 3005 5801

E-Mail: [boschpowertools@id.bosch.com](mailto:boschpowertools@id.bosch.com)

[www.bosch-pt.co.id](http://www.bosch-pt.co.id)

### Philippines

Robert Bosch, Inc.

28th Floor Fort Legend Towers,

3rd Avenue corner 31st Street,

Fort Bonifacio Global City,

1634 Taguig City, Philippines

Tel.: (02) 8703871

Fax: (02) 8703870

[matheus.contiero@ph.bosch.com](mailto:matheus.contiero@ph.bosch.com)

[www.bosch-pt.com.ph](http://www.bosch-pt.com.ph)

Bosch Service Center:

9725-27 Kamagong Street

San Antonio Village

Makati City, Philippines

Tel.: (02) 8999091

Fax: (02) 8976432

E-Mail: [rosalie.dagdagan@ph.bosch.com](mailto:rosalie.dagdagan@ph.bosch.com)

### Malaysia

Robert Bosch Sdn. Bhd.

No. 8A, Jalan 13/6

G.P.O. Box 10818

46200 Petaling Jaya

Selangor, Malaysia

Tel.: (03) 79663194

Fax: (03) 79583838

E-Mail: [cheehoe.on@my.bosch.com](mailto:cheehoe.on@my.bosch.com)

Toll-Free: 1800 880188

[www.bosch-pt.com.my](http://www.bosch-pt.com.my)

### Thailand

Robert Bosch Ltd.

Liberty Square Building

No. 287, 11 Floor

Silom Road, Bangrak

Bangkok 10500

Tel.: 02 6393111

Fax: 02 2384783

Robert Bosch Ltd., P. O. Box 2054

Bangkok 10501, Thailand

[www.bosch.co.th](http://www.bosch.co.th)

Bosch Service – Training Centre

La Salle Tower Ground Floor Unit No.2

10/11 La Salle Moo 16

Srinakharin Road

Bangkaew, Bang Plee

Samutprakarn 10540

Thailand

Tel.: 02 7587555

Fax: 02 7587525

### Singapore

Powerwell Service Centre Ptd Ltd

65 Ubi Crescent, #06-03 HOLA Centre

Singapore 408559

Tel.: 6746 9770/71

Fax: 6746 9760

E-Mail: [powerwellsc@gmail.com](mailto:powerwellsc@gmail.com)

Toll-Free: 1800 3338333

[www.bosch-pt.com.sg](http://www.bosch-pt.com.sg)



**Vietnam**

Robert Bosch Vietnam Co. Ltd  
 13th Floor, 194 Golden Building  
 473 Dien Bien Phu Street  
 Ward 25, Binh Thanh District  
 84 Ho Chi Minh City  
 Vietnam  
 Tel.: (08) 6258 3690  
 Fax: (08) 6258 3692  
 Hotline: (08) 6250 8555  
 E-Mail: tuvankhachhang-pt@vn.bosch.com  
 www.bosch-pt.com.vn  
 www.baohanhbosch-pt.com.vn

**Australia, New Zealand and Pacific Islands**

Robert Bosch Australia Pty. Ltd.  
 Power Tools  
 Locked Bag 66  
 Clayton South VIC 3169  
 Customer Contact Center  
 Inside Australia:  
 Phone: (01300) 307044  
 Fax: (01300) 307045  
 Inside New Zealand:  
 Phone: (0800) 543353  
 Fax: (0800) 428570  
 Outside AU and NZ:  
 Phone: +61 3 95415555  
 www.bosch-pt.com.au  
 www.bosch-pt.co.nz

**Egypt**

Unimar  
 20 Markaz kadmat  
 El tagmoa EL Aoul – New Cairo  
 Tel: +2 02 224 76091 - 95 / + 2 02 224 78072 - 73  
 Fax: +2 02 224 78075  
 E-Mail: adelzaki@unimaregypt.com

**Ethiopia**

Forever plc  
 Kebele 2,754, BP 4806,  
 Addis Ababa, Ethiopia  
 Tel: +251 111 560 600, +251 111 560 600  
 E-Mail: foreverplc@ethionet.et

**Nigeria**

C. Woermann Ltd.  
 P.O. Box 318  
 6, Badejo Kalesanwo Street  
 Matori Industrial Estate  
 Lagos, Nigeria  
 Tel: +234 17 736 498, +234 17 730 904  
 E-Mail: d.kornemann@woermann-nigeria.com

**Republic of South Africa**

**Customer service**  
 Hotline: (011) 6519600

**Gauteng – BSC Service Centre**

35 Roper Street, New Centre  
 Johannesburg  
 Tel.: (011) 4939375  
 Fax: (011) 4930126  
 E-Mail: bsctools@icon.co.za

**KZN – BSC Service Centre**

Unit E, Almar Centre  
 143 Crompton Street  
 Pinetown  
 Tel.: (031) 7012120  
 Fax: (031) 7012446  
 E-Mail: bsc.dur@za.bosch.com

**Western Cape – BSC Service Centre**

Democracy Way, Prosperity Park  
 Milnerton  
 Tel.: (021) 5512577  
 Fax: (021) 5513223  
 E-Mail: bsc@zsd.co.za

**Bosch Headquarters**

Midrand, Gauteng  
 Tel.: (011) 6519600  
 Fax: (011) 6519880  
 E-Mail: rbsa-hq.pts@za.bosch.com

**Transport**

The contained lithium-ion batteries are subject to the Dangerous Goods Legislation requirements. The user can transport the batteries by road without further requirements.

When being transported by third parties (e.g.: air transport or forwarding agency), special requirements on packaging and labelling must be observed. For preparation of the item being shipped, consulting an expert for hazardous material is required.

Dispatch batteries only when the housing is undamaged. Tape or mask off open contacts and pack up the battery in such a manner that it cannot move around in the packaging. Please also observe possibly more detailed national regulations.

**Disposal**

The machine, rechargeable batteries, accessories and packaging should be sorted for environmental-friendly recycling.

Do not dispose of power tools and batteries/rechargeable batteries into household waste!

**Battery packs/batteries:****Li-ion:**

Please observe the instructions in section "Transport", page 9.

Subject to change without notice.