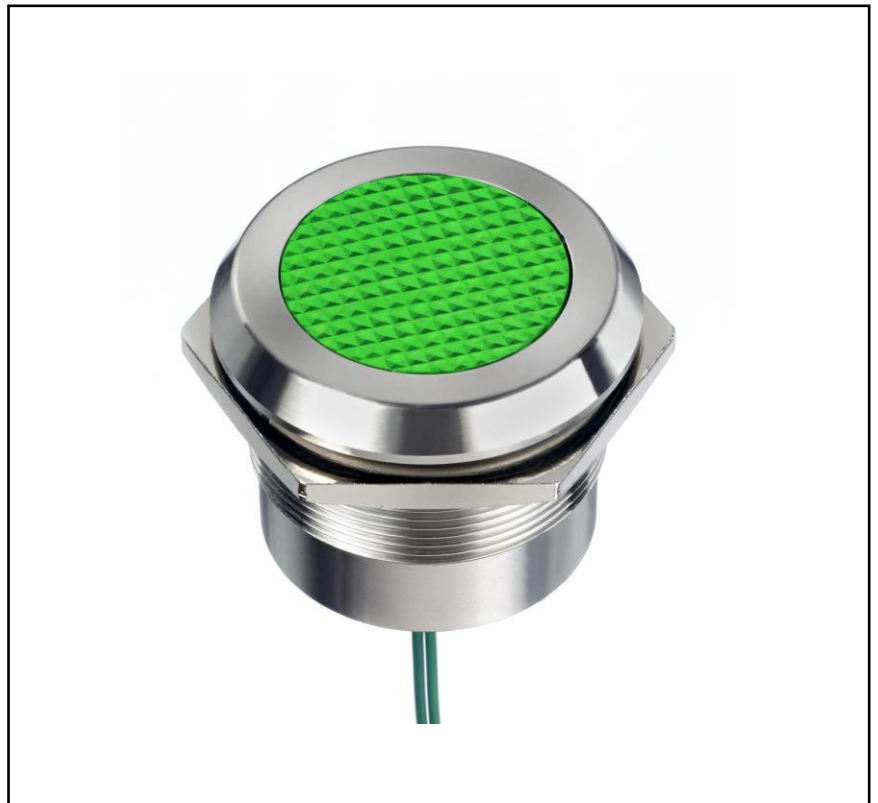


Features

- Bezel finish: Stainless Steel 316L.
- Bezel Style: Flush chamfered.
- Voltage: 12 to 24V AC/DC.
- Terminals: 200mm long wires, 20 AWG
- Sealing: IP67 and IP69K.
- Supplied with fixing nut, spring washer.
- Ø30 mm panel mount

RS PRO Indicators

RS Stock No.: 2538519



RS PRO Professionally Approved Products bring to you professional quality parts across all product categories. Our product range has been tested by engineers and provides a comparable quality to the leading brands without paying a premium price.

Product Description

Panel mount LED indicators with 23.2 mm coloured Fresnel lens with above panel sealing to IP67 & IP69K.

TYPICAL APPLICATIONS

- Professional Electrical Appliances
- Communications systems.
- Civil engineering and off-highway vehicles.
- Oil & Gas.
- Aftermarket
- Food and Beverage.
- Security.
- Machine Tool
- Process Controls.

General Specifications

Light Output Colour	Green
Lamp Type	LED
Termination Type	Wires
Type	Panel Mount Indicator
Bezel Style	Chamfer
Bezel Colour	Stainless Steel
Intensity	5200 mcd
Type Of Illumination	Fixed Light
LED Colour	Green
Viewing Angle	60°
Life Expectancy	100000hours
Applications	Professional Electrical Appliances
Operating Humidity	45 to 85%
Brightness	5200 mcd

Electrical Specifications

Voltage Rating	12 to 24V AC/DC
Current Rating	30mA
Rectifier	Half Wave
Voltage Tolerance	10%
Insulation Resistance	4000 MΩ at 500 VDC
Maximum Power Dissipation	55mW
Wavelength	525 nm
Weight	50g

Mechanical Specifications

Mounting Hole Size	30mm
Length	41.5 mm
Shape	Round
Lamp Size	18.2mm

Operation Environment Specifications

Temperature Rating	-40 to +85°C (-40 °F to +185 °F)
--------------------	----------------------------------

Protection Category

IP Rating	IP67 & IP69K
-----------	--------------

Approvals

Compliance/ Certifications	UL
Declarations	EN60529