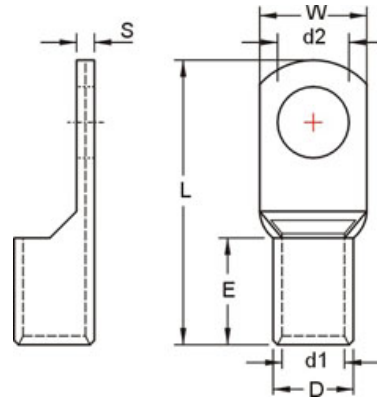


## Datasheet

# RS Pro Non-Insulated Copper Tubular Lugs (TL Series)

Stock Number: 125-1960



WIRE RANGE A.W.G. / mm <sup>2</sup>	ITEM NO.	STUID SIZE d2		DIMENSION inch(mm)						Q'TY BOX
				W	d1	D	L	E	S	
6 A.W.G.	TL16-8	5/16	8.4	12.6	5.5	7.2	29.5	10.5	1.3	250
16 mm <sup>2</sup>										

### Maximum Electric Current:

A.W.G.	6
AMP.	95

**Terminal Material:** Copper