

FEATURES

- Easily cleaned
- Conforms to BS4568
- UL Approved

RS PRO 316 Stainless Steel Rigid Conduit Metal 25mm x 3m 1.5mm

RS Stock No.: 471-1619



RS Professionally Approved Products bring to you professional quality parts across all product categories. Our product range has been tested by engineers and provides a comparable quality to the leading brands without paying a premium price.

Product Description

A range of Conduit, Fittings and Accessories manufactured from high grade stainless steel. These products are able to operate in many aggressive environments including conditions experienced offshore. They are ideal for applications in the food, brewing, dairy, pharmaceutical and chemical industries or anywhere that requires high pressure washdowns

For Cable and Wire pulling lubricants see stock no. [196-3407](#) typically
For LSF Conduit Cables see stock no. [363-222](#) typically

General Specifications

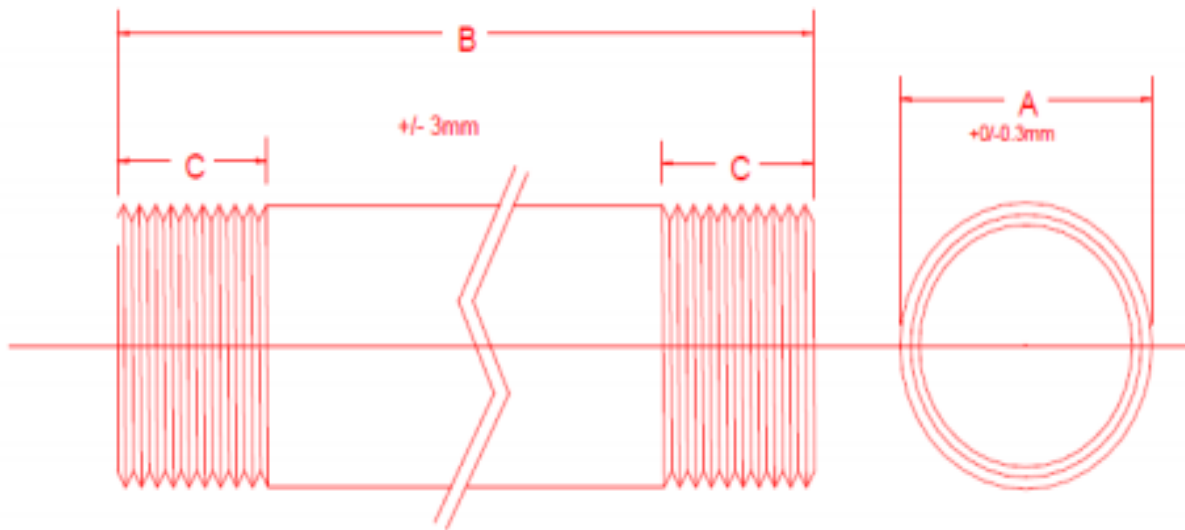
Conduit Type	Rigid
Material	316 Stainless Steel
Colour	Metal
Thread Type	Metric / Male
Thread Details	ISO form 1.5 mm pitch
Material Gauge	16/17
Finish	Satin (Brushed)

Mechanical Specifications

Nominal Diameter	25mm
Outer Diameter	25mm
Length	3mm
Thread Size	3.3mm

Approvals

Compliance/Certifications	UL
Standards Met	BS4568:1:1970



DRAWING	NOMINAL	A	B	C		WALL
NUMBER	SIZE	MIN	NOM	MIN	MAX	THICKNESS
UK A-D	20	20	3000	13.0	15.0	1.5 +/-0.1
UK B-D	25	25	3000	16.0	18.0	1.5 +/-0.1

