

DSM Series
Single-Acting
 Low Height, Flat Cylinder
 Spring return

Capacity:
5-150 ton

Stroke:
6-16 mm

Maximum Operating Pressure:
700 bar

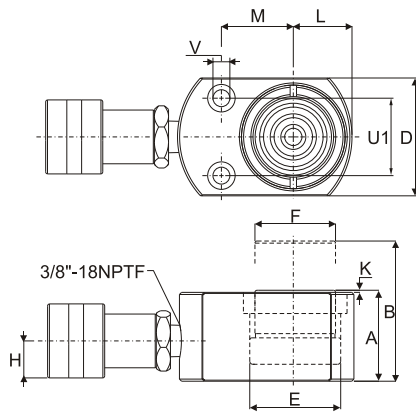
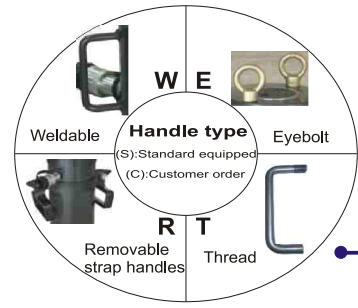
DSM Single-Acting, Low Height, Flat Cylinders

- Compact and flat design for use where in a narrow space.
- Mounting holes permit easy fixturing.
- Grooved plunger ends require no saddle.
- Hard chrome plated plunger and inner of barrel resists wear and corrosion.
- Maximum sized springs speed piston return and increase spring life.
- Plunger wiper reduces contaminant.
- Stop ring for piston blow-out protection.
- Powder coat finish for increased corrosion resistance and antirust.
- DQC-3/8UF coupler and dust cap are included on all models.



DSM-50

DSM-50 is fitting with a DQC-3/8UF.

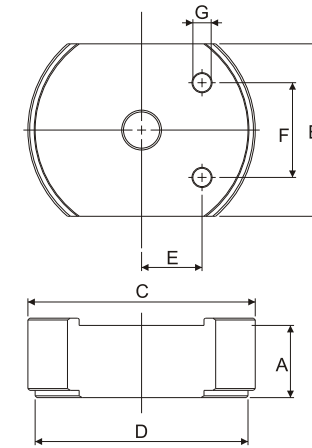


Handle type	Model Number	Cylinder Capacity	Stroke	Cylinder Effective Area	Oil Cap.	Collapsed Height	Ext. Height
(S)	DSM-50	5 (45)	6	6.5	4	32	38
	DSM-100	10 (101)	12	14.5	18	43	54
	DSM-200	20 (201)	11	28.7	32	51	62
	DSM-300	30 (295)	13	42.1	55	58	71
W	DSM-500	45 (435)	16	62.1	99	66	82
W	DSM-750	75 (718)	16	102.6	164	79	95
W	DSM-1000	90 (887)	16	126.7	203	85	101
W	DSM-1500	150 (1386)	16	198.1	317	100	116

Outside Diameter	Cylinder Bore Diam.	Plunger Diam.	Base to Adv. Port	Plunger Protrusion from Base	Plunger to Base	Plunger to Mtg. Hole	Weight	Base Mounting Hole				Model Number
								Hole Pitch.	Hole Diam.	Counter Bore Diam.	Counter Bore Depth	
D (mm)	E (mm)	F (mm)	H (mm)	K (mm)	L (mm)	M (mm)	(kg)	U1(mm)	V(mm)	(mm)	(mm)	
58 x 41	28.7	25.4	16	1	20	22	1.0	28.5	5.5	7.9	4.3	DSM-50
82 x 55	42.9	38.1	19	1	27	34	1.4	36.6	7.1	10.7	7.9	DSM-100
101x 76	60.5	50.8	19	1	39	39	3.1	49.3	10.0	15.1	9.9	DSM-200
117 x 95	73.2	63.4	19	2	47	44	4.5	52.3	10.0	15.9	11.2	DSM-300
140 x 114	88.9	69.8	19	2	57	53	6.8	66.5	11.9	19.0	12.7	DSM-500
165 x 139	114.3	82.6	19	2	69	66	11.3	76.2	13.5	20.6	14.2	DSM-750
178 x 153	127.0	92.2	19	2	76	74	14.5	76.2	13.5	20.6	14.2	DSM-1000
215 x 190	158.8	114.3	23	2	95	82	26.3	117.3	13.5	20.6	14.2	DSM-1500

DSM DSM series Accessories

- ※Various height magnetic adapters.
- ※Perfect for low clearance areas needing a little height boost.



Maximum working pressure 10000psi/ 700bar

Model No.	Cylinder Model	Cylinder Height		Adapter Dimension								Weight (kg)
				A		B	C	D	E	F	G	
		(in)	(mm)	(in)	(mm)	(in/mm)	(in/mm)	(in/mm)	(in/mm)	(in/mm)	(in/mm)	
DXKSM5-6	DSM-50	1.25	32.0	0.1	6.4	1.6 / 41.4	2.5 / 64.7	2.3 / 58.7	0.5 / 13.6	1.1 / 28.5	0.2 / 5.1	0.1
DXKSM5-12				0.5	12.7							0.2
DXKSM5-25				1.0	25.4							0.5
DXKSM5-31				1.3	31.8							0.6
DXKSM10-9	DSM-100	1.69	43.0	0.4	9.9	2.2 / 55.6	3.6 / 90.6	3.3 / 82.6	0.8 / 20.5	1.4 / 36.6	0.3 / 7.1	0.3
DXKSM10-20				0.8	20.0							0.7
DXKSM10-39				1.6	39.9							1.4
DXKSM20-9				0.4	9.9							0.6
DXKSM20-20	DSM-200	2.00	51.0	0.8	20.0	3.0 / 76.2	4.3 / 109.6	4.0 / 101.6	1.1 / 28.4	1.9 / 49.3	0.4 / 10.1	1.1
DXKSM20-39				1.6	39.9							2.2
DXKSM30-9				0.4	9.9							0.8
DXKSM30-20				0.8	20.0							1.6
DXKSM30-39	DSM-300	2.28	58.0	1.6	39.9	3.8 / 95.3	4.9 / 125.6	4.6 / 117.6	1.3 / 33.4	2.1 / 52.3	0.4 / 10.1	3.2



Control Valve

Fitting needle valve such as DV-82 is used to control cylinder speed during lifting and lowering. (See DV-Series)



Hydraulic Cylinder and Pump Sets

Basic system set-up include cylinder, male/female coupler, hose, pressure gauge, gauge accessories and pump. Please connect DURAJACK office nearest to you for advice and technical assistance in the layout of your ideal.