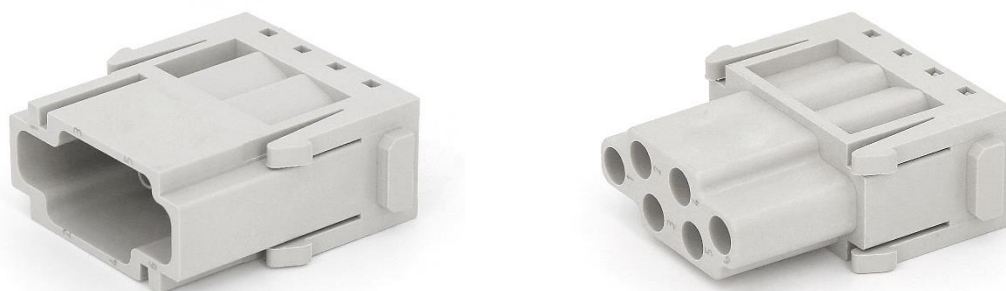


## Datasheet

# RS PRO HM Inserts



The RS Pro Heavy-Duty Connector series is a full range of heavy-duty inserts, housings, crimps and accessories. The housing is produced from corrosion resistant powder coated die cast Aluminium with locking levers made from galvanized Iron. These offer IP65 protection and come in standard or tall variations with both single and double locking options. The inserts are all made from Polycarbonate to industry standard sizes and are available in a choice of screw, crimp or spring clam terminations in a large variety of current ratings. The entire range of connectors are RoHS compliant and as with all RS Pro products, offer exceptional value for money.

## Features & Benefits:

- Modular Inserts
- For use with RS Pro Heavy-Duty Frames
- Fit RS Pro H6B, H10B, H16B & H24B Housing
- Polycarbonate Body

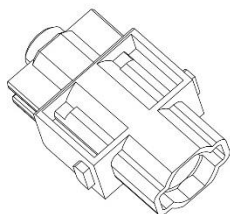
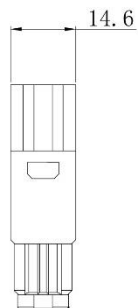
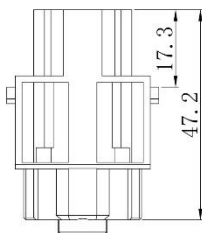
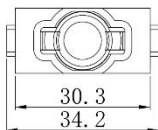
## Quality Standards



## Dimensional line drawings

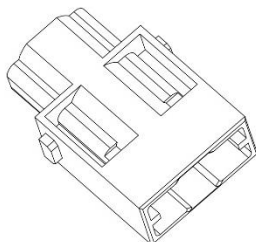
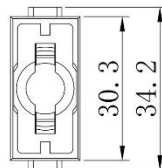
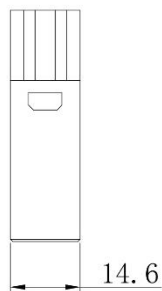
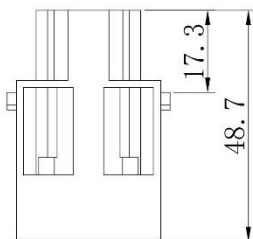
### 1 Pole Female Crimp 100A 830V

208-4580



### 1 Pole Male Crimp 100A 830V

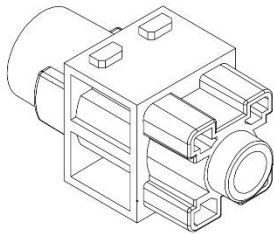
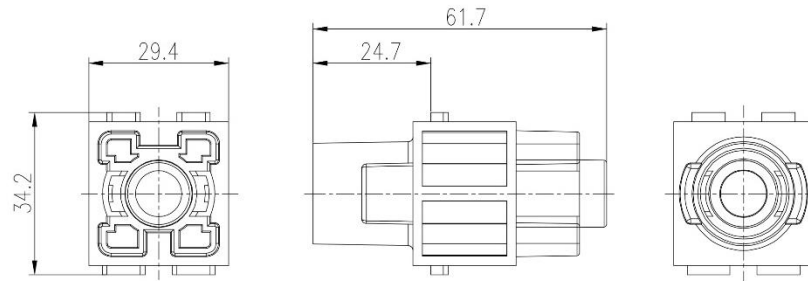
208-4581



## Dimensional line drawings

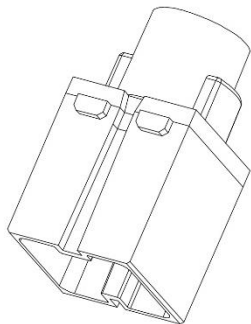
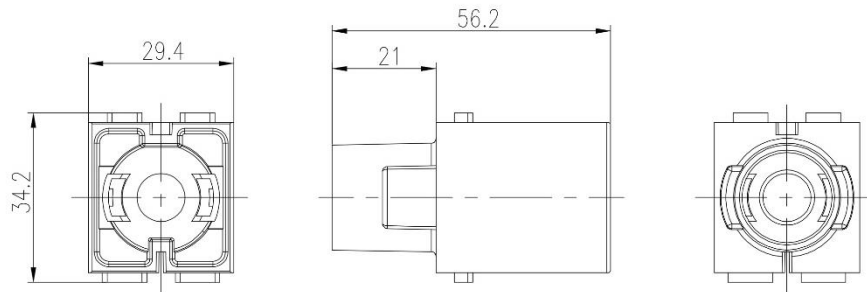
### 1 Pole Female Crimp 200A 1000V

208-4093



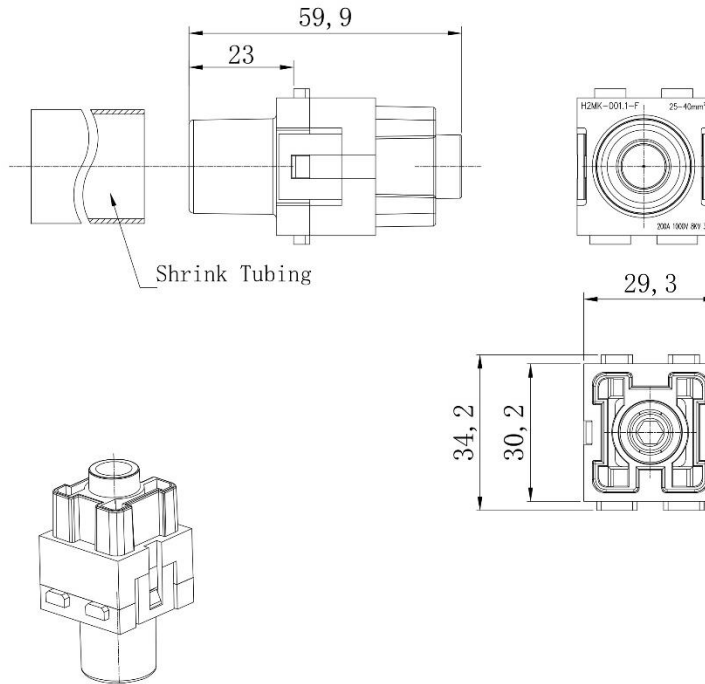
### 1 Pole Male Crimp 200A 1000V

208-4095

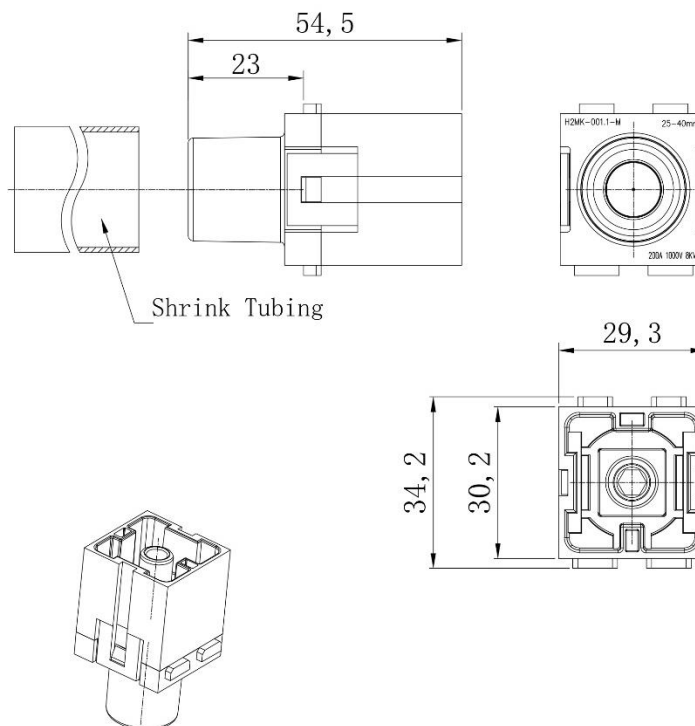


# Dimensional line drawings

## 1 Pole Female Screw 200A 1000V for 25-40mm<sup>2</sup> Cable Diameter 208-4089

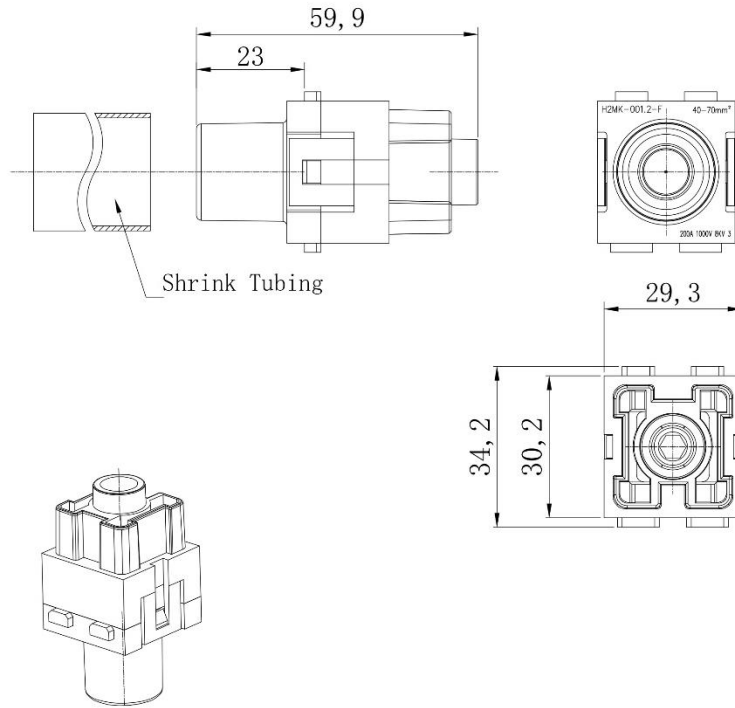


## 1 Pole Male Screw 200A 1000V for 25-40mm<sup>2</sup> Cable Diameter 208-4090

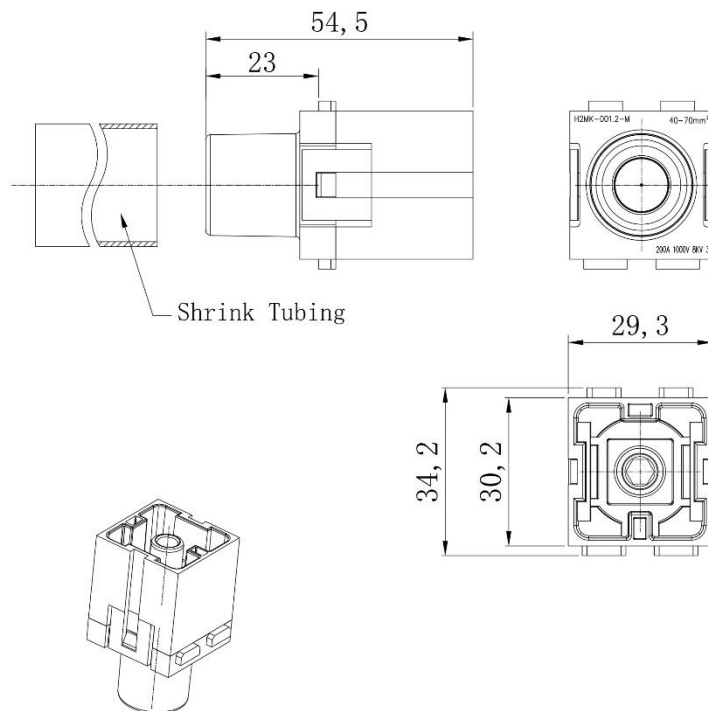


# Dimensional line drawings

## 1 Pole Female Screw 200A 1000V for 40-70mm<sup>2</sup> Cable Diameter 208-4091



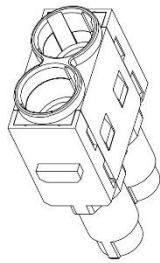
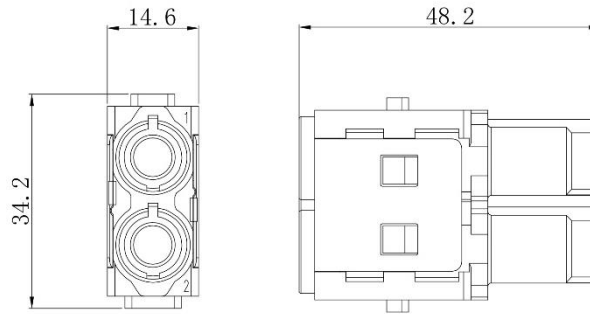
## 1 Pole Male Screw 200A 1000V for 40-70mm<sup>2</sup> Cable Diameter 208-4092



## Dimensional line drawings

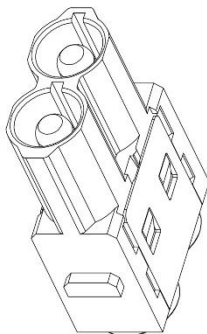
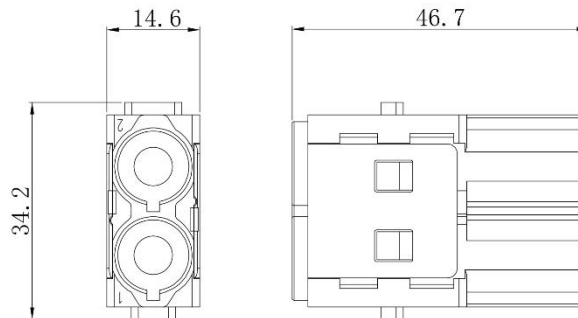
### 2 Pole Female Crimp 70A 1000V

208-4602



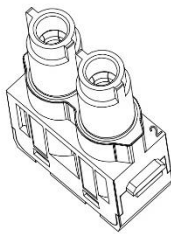
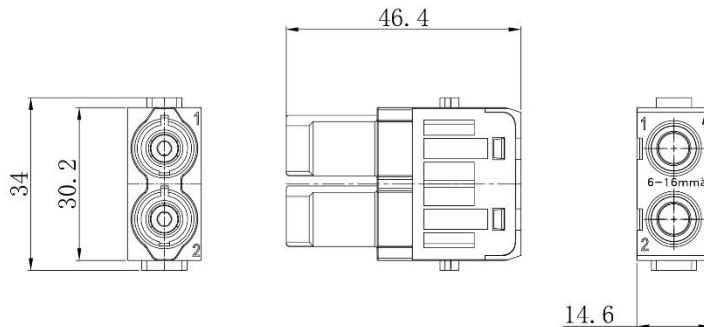
### 2 Pole Male Crimp 70A 1000V

208-4603

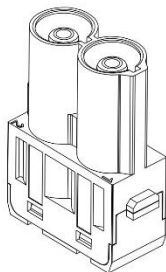
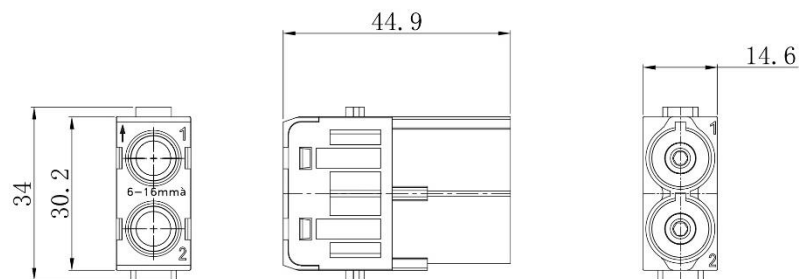


## Dimensional line drawings

### 2 Pole Female Screw 70A 1000V for 6-16mm<sup>2</sup> Cable Diameter 208-4597



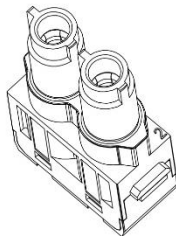
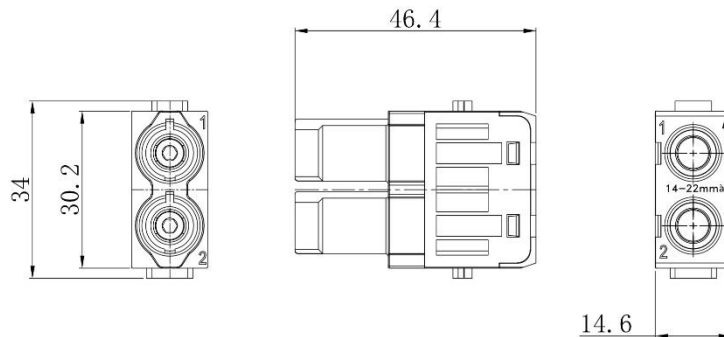
### 2 Pole Male Screw 70A 1000V for 6-16mm<sup>2</sup> Cable Diameter 208-4598



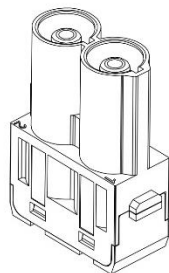
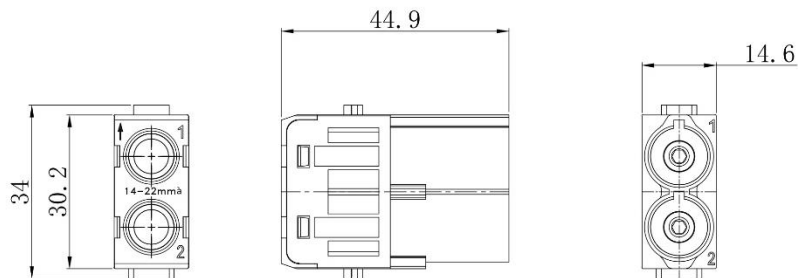


## Dimensional line drawings

### 2 Pole Female Screw 70A 1000V for 14-22mm<sup>2</sup> Cable Diameter 208-4600

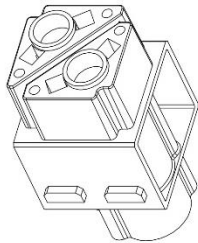
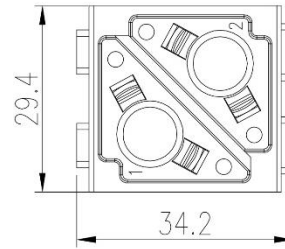
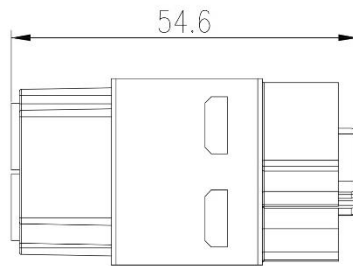


### 2 Pole Male Screw 70A 1000V for 14-22mm<sup>2</sup> Cable Diameter 208-4601

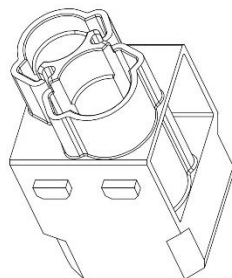
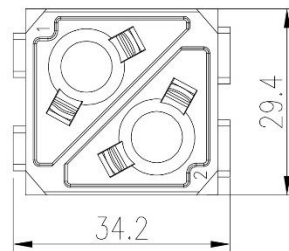
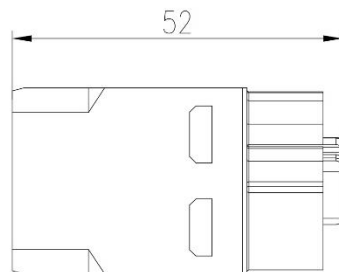


## Dimensional line drawings

### 2 Pole Female Crimp 100A 1000V 208-4100



### 2 Pole Male Crimp 100A 1000V 208-4102

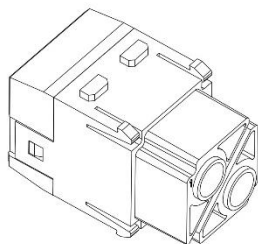
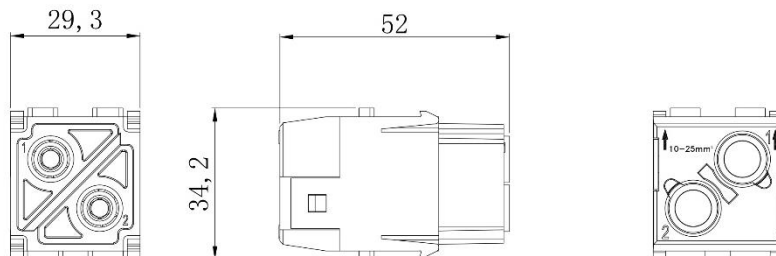


## Dimensional line drawings

### 2 Pole Female Screw 100A 1000V for 10-25mm<sup>2</sup> Cable

Diameter

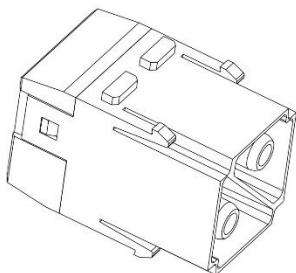
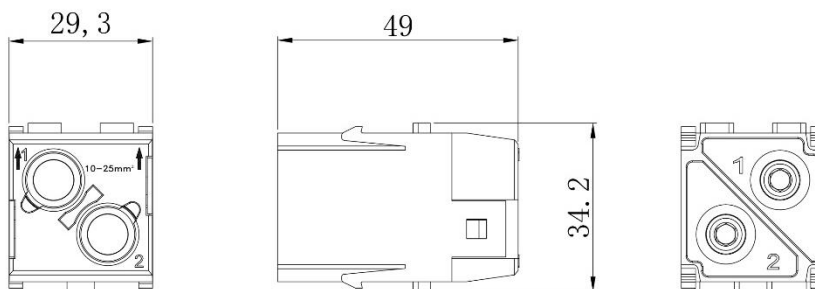
208-4096



### 2 Pole Male Screw 100A 1000V for 10-25mm<sup>2</sup> Cable

Diameter

208-4097

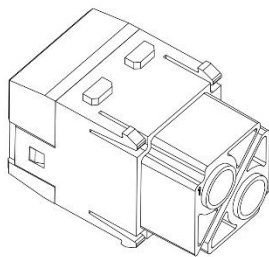
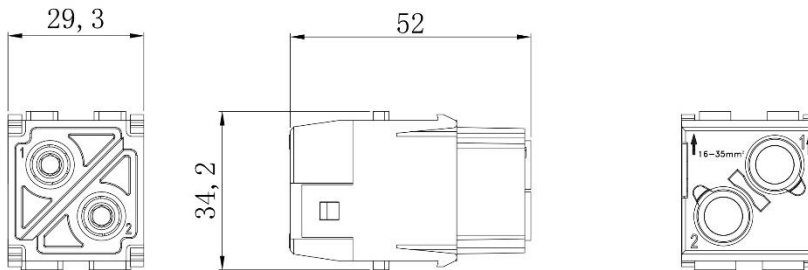


## Dimensional line drawings

### 2 Pole Female Screw 100A 1000V for 16-35mm<sup>2</sup> Cable

Diameter

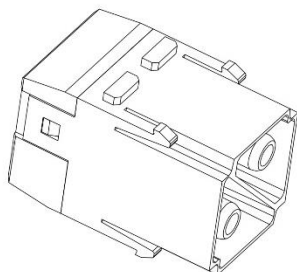
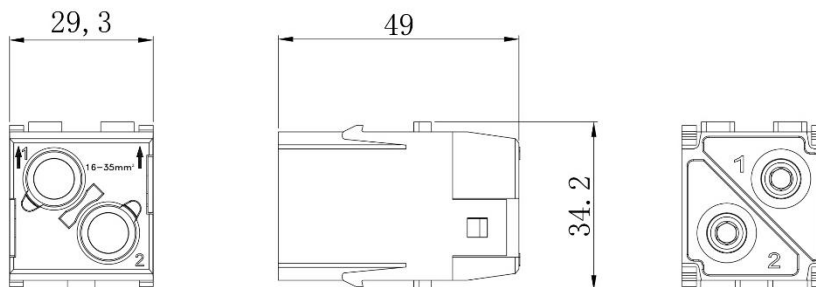
208-4098



### 2 Pole Male Screw 100A 1000V for 16-35mm<sup>2</sup> Cable

Diameter

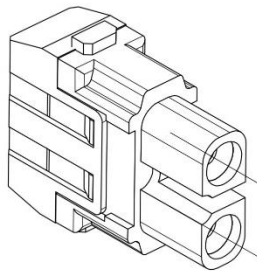
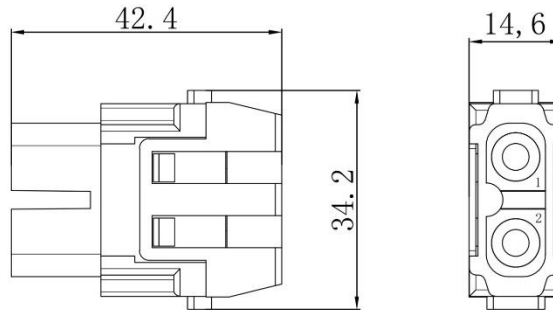
208-4099



## Dimensional line drawings

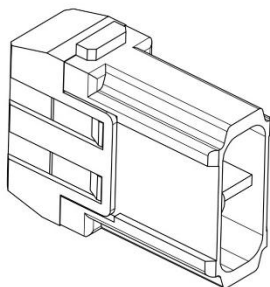
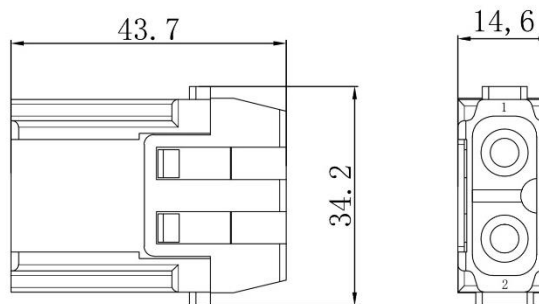
### 2 Pole Female Crimp 40A 1000V

208-4587



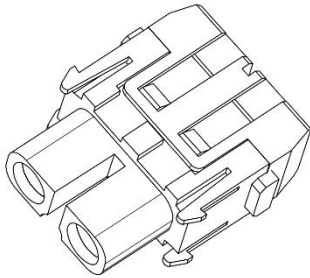
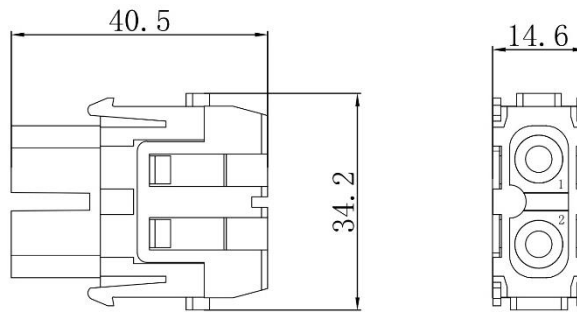
### 2 Pole Male Crimp 40A 1000V

208-4588

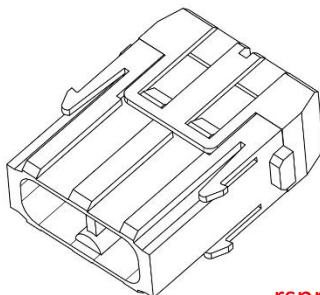
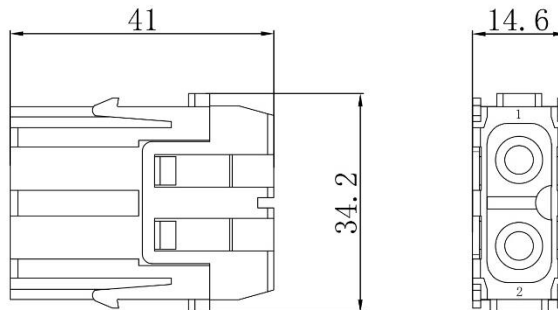


## Dimensional line drawings

### 2 Pole Female Screw 40A 1000V for 2.5-8mm<sup>2</sup> Cable 208-4582

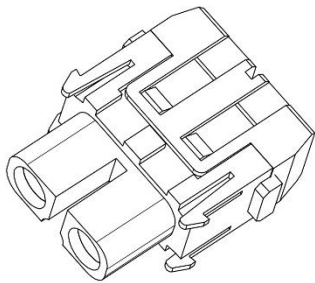
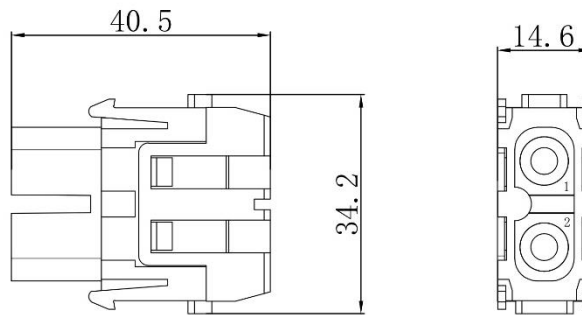


### 2 Pole Male Screw 40A 1000V for 2.5-8mm<sup>2</sup> Cable 208-4584

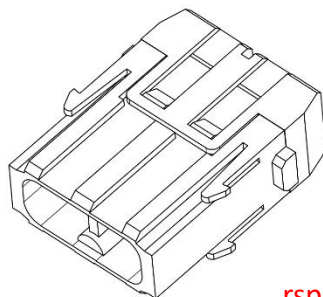
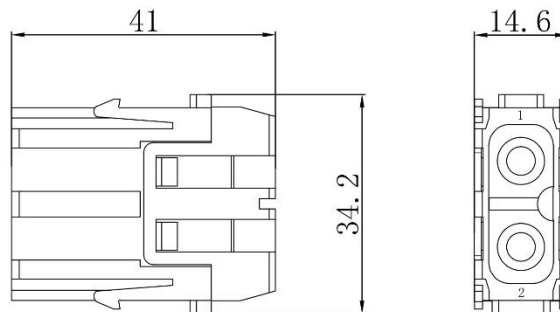


## Dimensional line drawings

### 2 Pole Female Screw 40A 1000V for 6-10mm<sup>2</sup> Cable 208-4585



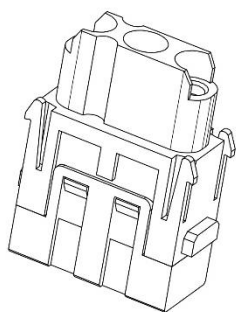
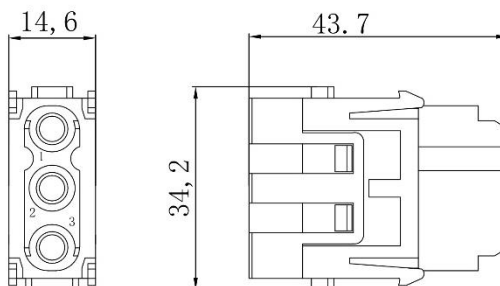
### 2 Pole Male Screw 40A 1000V for 6-10mm<sup>2</sup> Cable 208-4586



## Dimensional line drawings

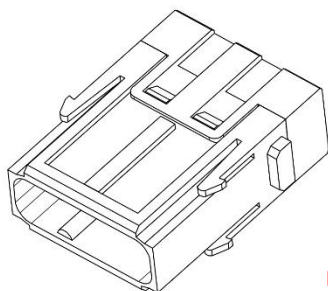
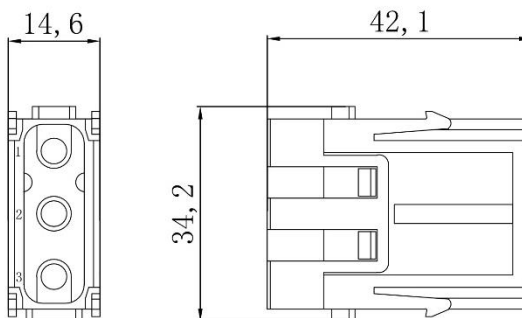
### 3 Pole Female Screw 40A 690V for 2.5-8mm<sup>2</sup> Cable

208-4589



### 3 Pole Male Screw 40A 690V for 2.5-8mm<sup>2</sup> Cable

208-4590

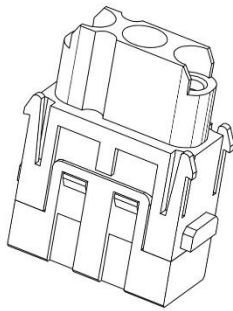
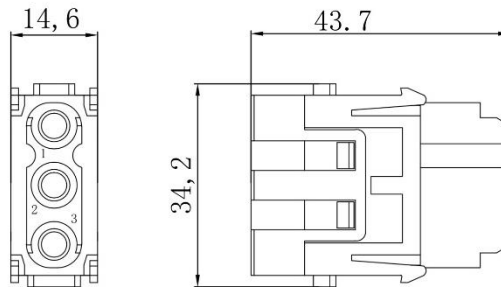




## Dimensional line drawings

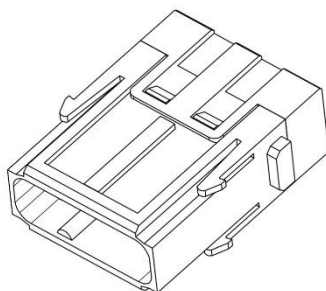
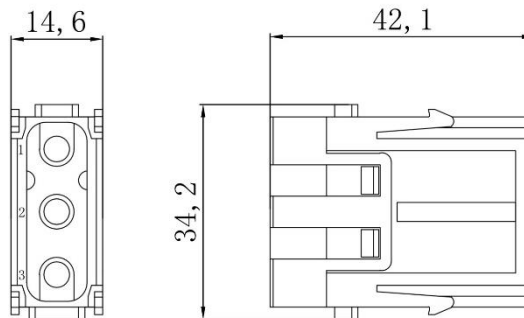
### 3 Pole Female Screw 40A 690V for 6-10mm<sup>2</sup> Cable

208-4591



### 3 Pole Male Screw 40A 690V for 6-10mm<sup>2</sup> Cable

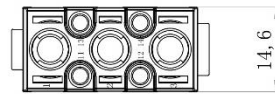
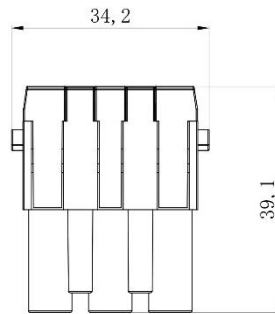
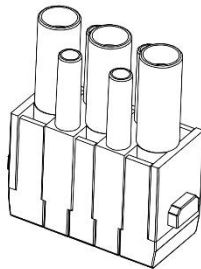
208-4592



## Dimensional line drawings

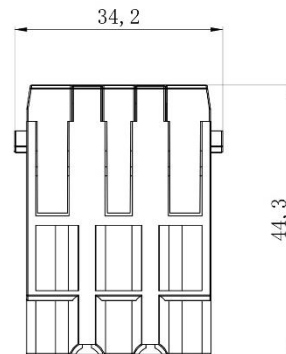
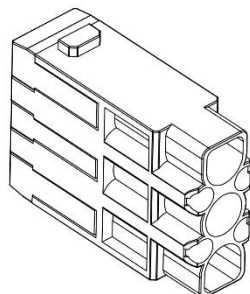
### 3+4 Pole Female Crimp 40A/10A 830V

208-4593



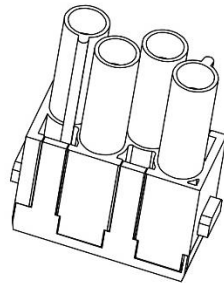
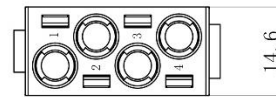
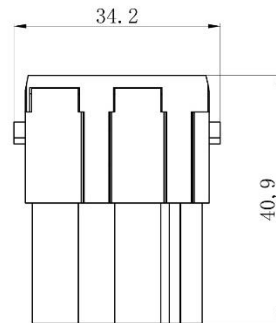
### 3+4 Pole Male Crimp 40A/10A 830V

208-4594

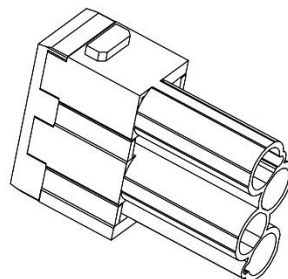
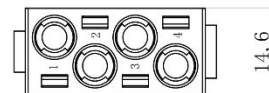
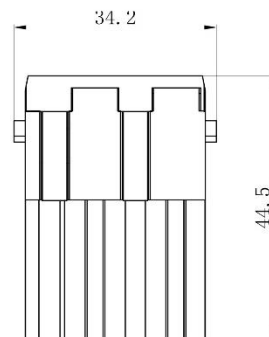


## Dimensional line drawings

### 4 Pole Female Crimp 40A 830V 208-4595



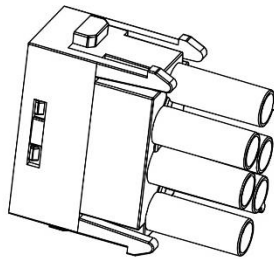
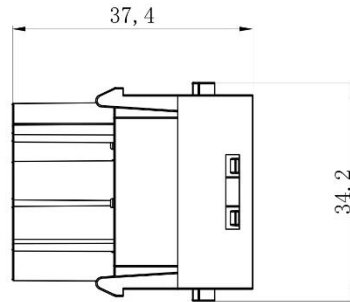
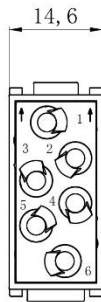
### 4 Pole Male Crimp 40A 830V 208-4596



## Dimensional line drawings

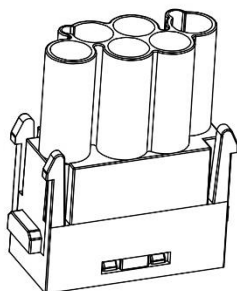
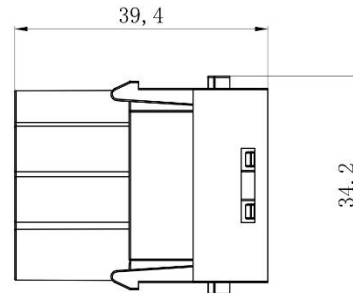
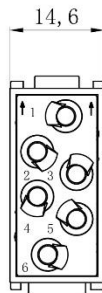
### 6 Pole Female Crimp 16A 830V

208-4616



### 6 Pole Male Crimp 16A 830V

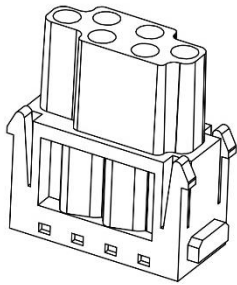
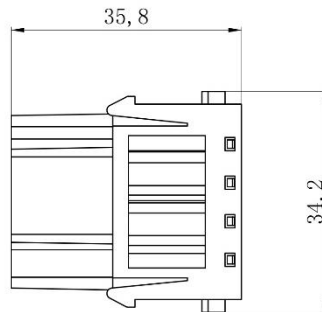
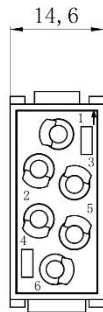
208-4617



## Dimensional line drawings

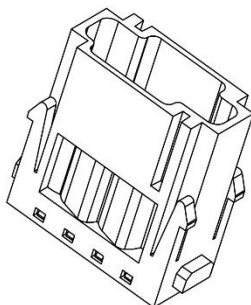
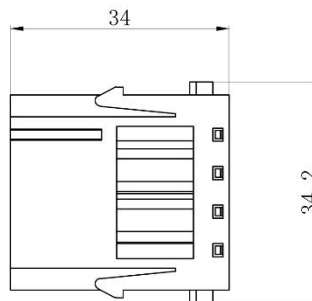
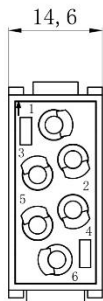
### 6 Pole Female Crimp 16A 500V

208-4575



### 6 Pole Male Crimp 16A 500V

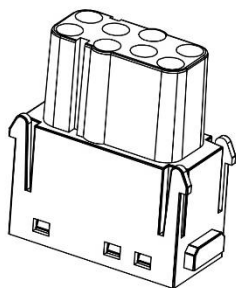
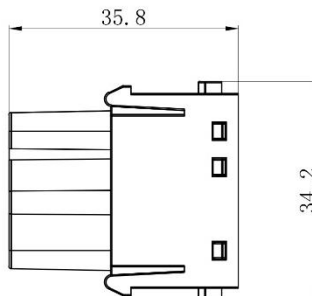
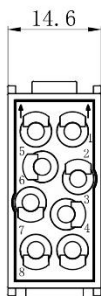
208-4576



## Dimensional line drawings

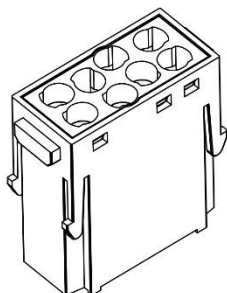
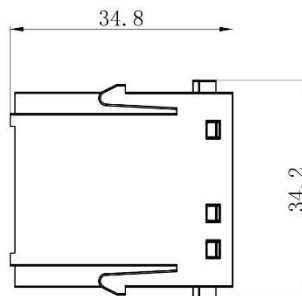
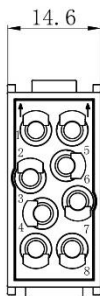
### 8 Pole Female Crimp 16A 400V

208-4578



### 8 Pole Male Crimp 16A 400V

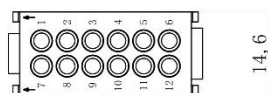
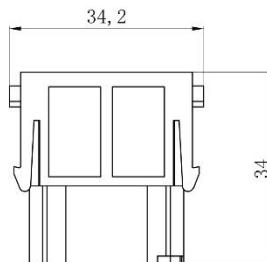
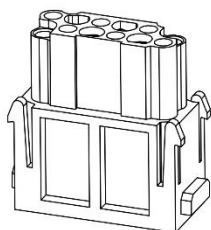
208-4579



## Dimensional line drawings

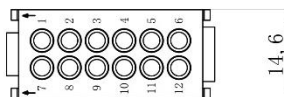
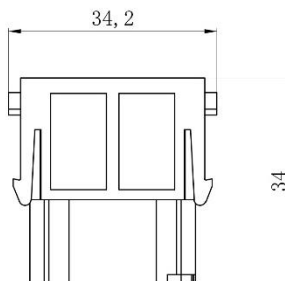
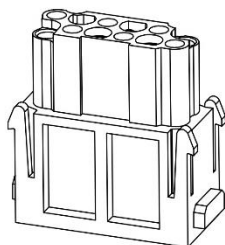
### 12 Pole Female Crimp 10A 250V

208-4569



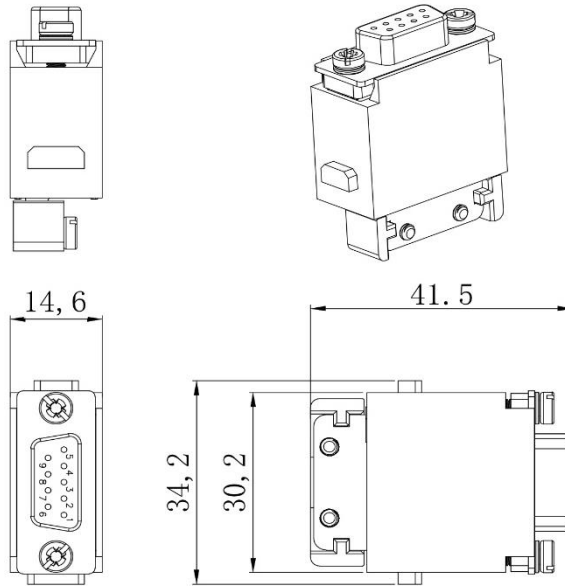
### 12 Pole Male Crimp 10A 250V

208-4570

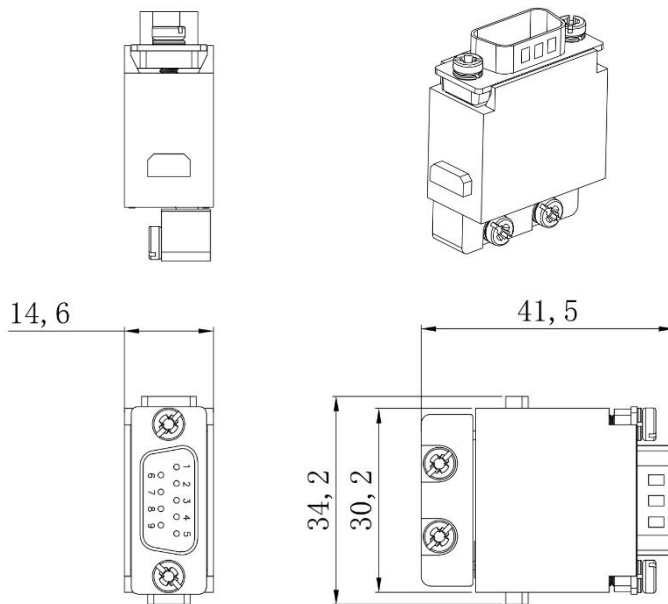


# Dimensional line drawings

## 15 Pole D-sub (VGA) Female Crimp 5A 50V 208-4571



## 15 Pole D-sub (VGA) Male Crimp 5A 50V 208-4572

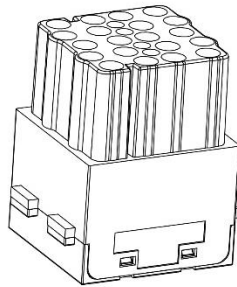
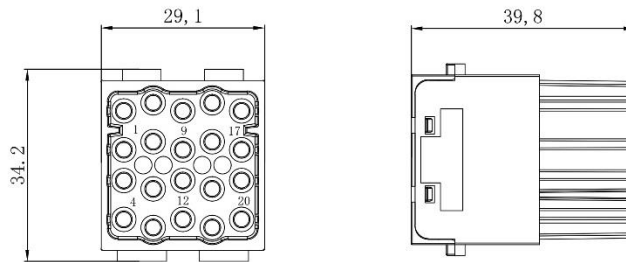




## Dimensional line drawings

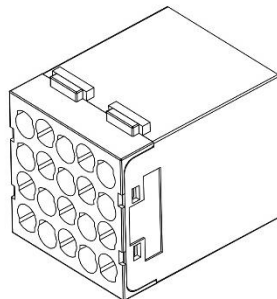
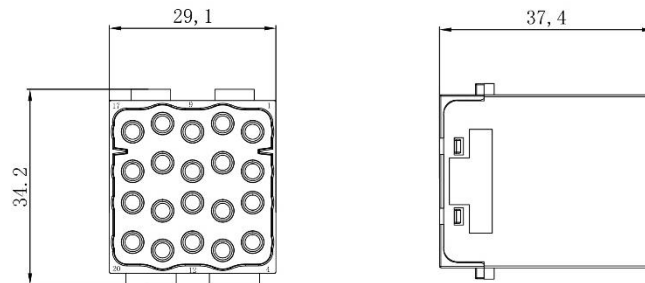
### 20 Pole Female Crimp 16A 500V

208-4086



### 20 Pole Male Crimp 16A 500V

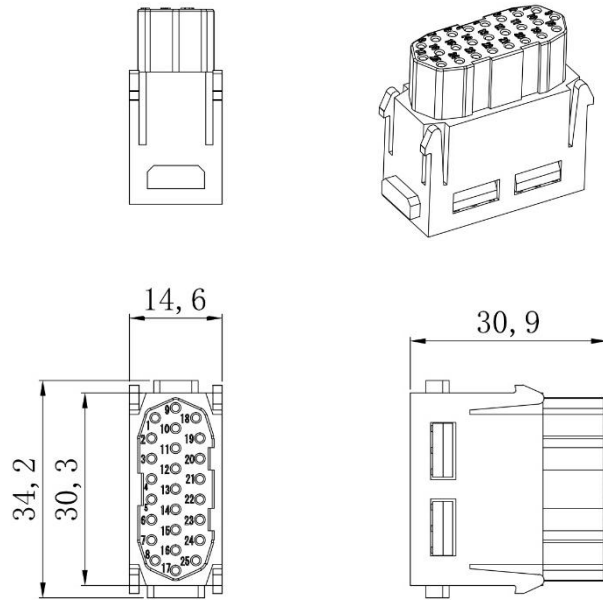
208-4087



## Dimensional line drawings

### 25 Pole Female Crimp 4A 50V

208-4573



### 25 Pole Male Crimp 4A 50V

208-4574

