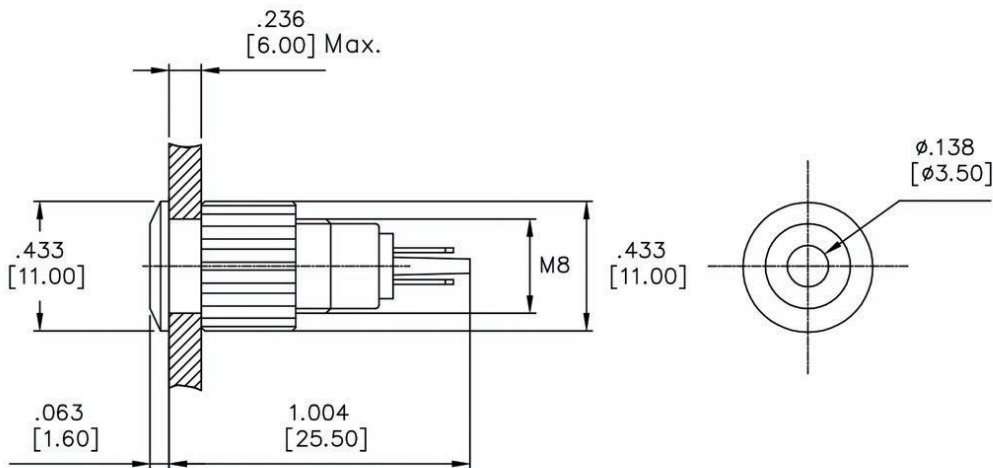


Datasheet

RS PRO Red Indicator

Stock No: **820-0573**



SPECIFICATIONS:

- 1.Voltage Range: 3~48V.
- 2.Rated Current: 15mA.
- 3.Dielectric Strength: 1,100V RMS 50~60Hz.
- 4.Operating Temperature: $-20^{\circ}\text{C} \sim +55^{\circ}\text{C}$.
- 5.IP Class: IP67 protection.
- 6.Torque: 5~14Nm max. applied to nut.

MATERIALS:

- 1.Button: PC.
- 2.Body: Brass nickel plated (N).
- 3.Base: PBT.
- 4.Lamp Type: LED.