

FEATURES

- 20 MHz bandwidth, 2 input channels
- Ultra-compact design
- Serial protocol decoding
- Mask limit testing
- Advanced digital triggering
- Spectrum analyser
- USB-connected and powered
- Persistence display mode
- Function generator and arbitrary waveform generator
- With magnitude, average and peak hold modes

RS PRO 2205A Oscilloscope, PC Based, 2 Channels, 20MHz

RS Stock No.: 163-2719



RS Professionally Approved Products bring to you professional quality parts across all product categories. Our product range has been tested by engineers and provides a comparable quality to the leading brands without paying a premium price.

Product Description

Introducing the USB PC oscilloscope from our own brand RS PRO, an ultra-compact and modern alternative oscilloscope that allows you to easily carry the device in a pocket or case and use it in a wide range of applications. The RS PRO compact USB PC oscilloscope is ideal for engineers on the move and can easily connect to a portable laptop or screen to visually display results.

General Specifications

Model Number	2205A
Oscilloscope Type	PC Based
Bandwidth	20MHz
Sampling Type	Real Time, Equivalent
Sampling Mode	Sampling, Peak Detection, Average
Standard Interfaces	1-Wire, ARINC 429, DCC, DMX512, I ² C, LIN, Modbus ASCII, Modbus RTU, PS/2, SPI, SENT, UART/RS-232, USB 1.1
Applications	Engineers on the move, Education, Hobby and professional field

Input System

Input Coupling	AC, DC
Input impedance	1MO \pm 2%. 15pf \pm 2pf
Input Sensitivity	10mV/div to 4V/div

Vertical System

Maximum Vertical Sensitivity	10mV/div
Minimum Vertical Sensitivity	4V/div
Vertical Resolution	8 bit
DC Gain Accuracy	±3% of full scale ±200 µV
Rise Time	≤17.5ns
Channel Voltage Offset Range	±50 mV to ±20 V (1-2-5 increments)
Math Operation	-x, x+y, x-y, x*y, x/y, x^y, sqrt, exp, ln, log, abs, norm, sign, sin, cos, tan, arcsin, arccos, arctan, sinh, cosh, tanh, freq, derivative, integral, min, max, average, peak, delay, duty, highpass, lowpass, bandpass, bandstop
FFT	Window Mode: Rectangular, Gaussian, triangular, Blackman, Blackman-Harris, Hamming, Hann, flat-top

Horizontal System

Real Time Sampling Rate	Single Channel: 200 MS/s Double Channels: 100 MS/s
Time Base Range	±100 ppm
Horizontal Scan Rate	5 ns/div to 5000 s/div
Realtime Waveform Acquisition Rate	10000 waveforms/s

X-Y Mode

X-Pole Input / Y-Pole Input	Channel 1 (CH1), Channel 2 (CH2)
Sample Frequency	200 MSa/s

Trigger Specifications

Trigger Type	Edge, Window, Pulse Width, Window Pulse Width, Dropout, Window Dropout, Interval, Logic
Trigger Source	CH1, CH2,
Trigger Modes	None, Auto, Repeat, Single
Trigger Sensitivity	Digital triggering provides 1 LSB accuracy up to full bandwidth

Display System

Display Mode	Magnitude, average, peak hold
Language	Simplified Chinese, Czech, Danish, Dutch, English, Finnish, French, German, Greek, Hungarian, Italian, Japanese, Korean, Norwegian, Polish, Portuguese, Romanian, Russian, Spanish, Swedish, Turkish

Mechanical Specifications

Dimensions	142mm x 92mm x 18.8mm
Length	142mm
Width	92mm
Height	18.8mm
Weight	0.2kg

Operation Environment Specifications

Altitude	Up to 2000m
Relative Humidity	5% to 80% RH
Operating Temperature Range	0°C to 50°C
Storage Temperature Range	-20°C to +60°C

Approvals

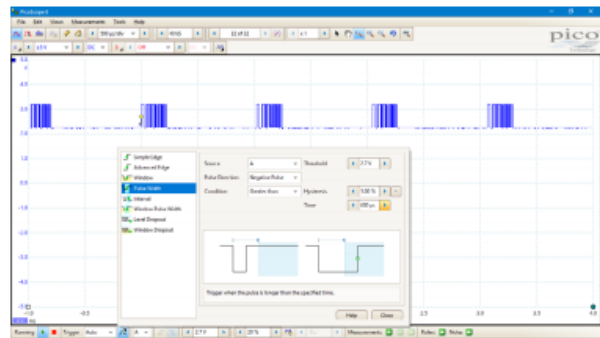
Compliance/Certifications	EN 61010-1:2010 / EN61326-1:2013, CE
----------------------------------	--------------------------------------



Advanced digital triggering

The RS Pro 2205A-20 utilises full digital triggering using the actual digitised data. This eliminates trigger errors and allows the scope to trigger on the smallest signals. It also results in a threshold resolution equal to the digitising resolution, with programmable hysteresis and optimal waveform stability.

The RS Pro 2205A-20 offers one of the best selections of advanced triggers available, including pulse width, window and dropout triggers to help you find and capture your signal quickly.

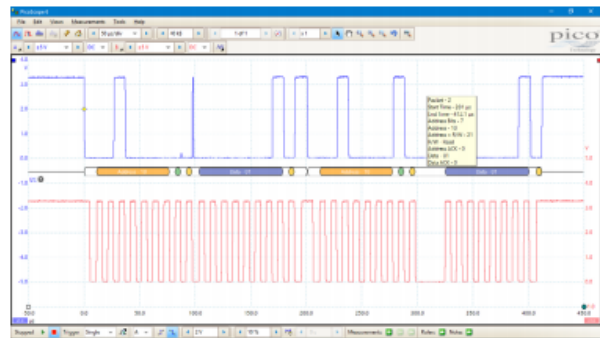


Serial decoding

The RS Pro 2205A-20 comes with serial decoding as standard. Display the data in the graph, in a table, or in both at once:

In the graph: show the decoded data alongside the waveform. The data packets are broken down into colour-coded fields, making it easy to locate and identify problem signals.

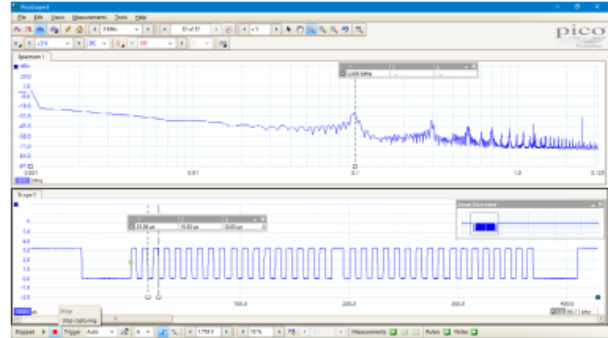
In a table: list the decoded frames, including the data and all flags and identifiers. Use the table to filter and search your data.



Multiple views

The free PicoScope software makes the best possible use of the display area. The waveform view is much bigger and higher resolution than a typical benchtop scope.

You can add additional time-domain scope and XY views and frequency-domain spectrum views, whether you are using the oscilloscope in scope or spectrum mode. Display the views in automatic or custom layouts.



ORDERING INFORMATION	
RS Pro 2205A-20	20 MHz, 2-channel USB PC oscilloscope
ACCESSORIES INCLUDED	
Quick Start Guide ×1, Data Sheet ×1, USB 2.0 cable ×1	
TA208 set of two 60 MHz (10:1/1:1) passive probes	
FREE DOWNLOAD	
PC Software	PicoScope 6 software
Documentation	Quick Start Guide
	Data Sheet