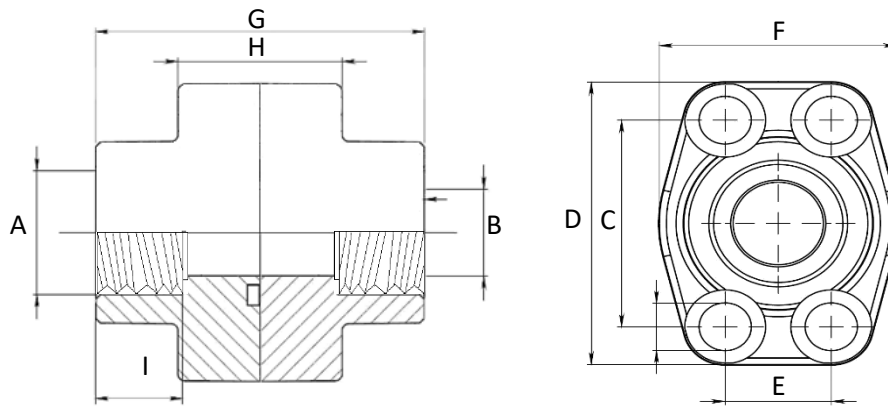


**BSP THREADED DOUBLE FLANGES**



**Series 6000**

WP (Bar)	Size	Type	Dimensions									
			A	B	C	D	E	F	G	H	I	Screws
414	1/2"	DFS401G012	1/2"	13	40,49	57	18,24	46	72	32	19	M8x30
414	1/2"	DFS401G038	3/8"	13	40,49	57	18,24	46	72	32	19	M8x30
414	3/4"	DFS402G	3/4"	19	50,80	71	23,80	55	70	42	22	M10x40
414	3/4"	DFS402G012	1/2"	13	50,80	71	23,80	55	70	42	19	M10x40
414	1"	DFS403G	1"	25	57,15	81	27,76	65	84	50	24	M12x45
414	1"	DFS403G034	3/4"	19	57,15	81	27,76	65	84	50	22	M12x45
414	1 1/4"	DFS404G	1 1/4"	32	66,68	95	31,75	78	90	54	25	M14x45
414	1 1/4"	DFS404GL13	1 1/4"	32	66,68	95	31,75	78	90	54	25	M12x45
414	1 1/4"	DFS404G100	1"	25	66,68	95	31,75	78	90	54	24	M14x45
414	1 1/4"	DFS404G100L13	1"	25	66,68	95	31,75	78	90	54	24	M12x45
414	1 1/2"	DFS405G	1 1/2"	38	79,38	112	36,50	94	100	60	28	M16x55
414	1 1/2"	DFS405G114	1 1/4"	32	79,38	112	36,50	94	100	60	25	M16x55
414	2"	DFS406G	2"	51	96,82	134	44,45	114	130	74	30	M20x70
414	2"	DFS406G112	1 1/2"	38	96,82	134	44,45	114	130	74	28	M20x70
414	2 1/2"	DFS507G	2 1/2"	63	123,80	180	58,70	152	160	90	35	M24x80
414	3"	DFS508G	3"	73	152,40	208	71,40	178	180	110	40	M30x100

**Designation for Order:**

Double Flanges  
(Flat side & Oring side)

ST52.3	DFS...S
SS316	DFX...S

Counter-Flanges  
(Flat side)

ST52.3	GFS...S
SS316	GFX...S

Flanges  
(Oring side)

ST52.3	AFS...S
SS316	AFX...S