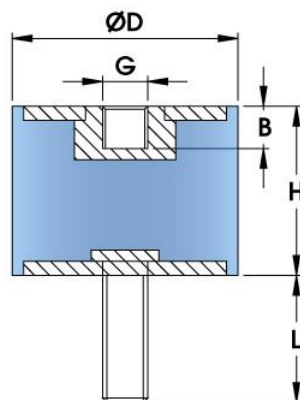


## Datasheet

**RS PRO Cylindrical Male – Female Anti Vibration Mounts**

A simple and cost-effective mount using made from natural rubber and Zinc plated mild steel. For use in compression and shear. A Very large range of available size and studs. Please note that thread depth 'B' is same as the thread size, i.e. M3 stud will have a 3mm deep (B) female metal fixing.



H – Height  
D – Diameter  
G – Thread Size  
L – Stud Length  
B - Thread Depth

<b>RS Code (mm)</b>	<b>Rubber Hardness (ShA)</b>	<b>Diameter (mm)</b>	<b>Height (mm)</b>	<b>G x L (mm)</b>	<b>Max Compression Load (KG)</b>	<b>Max Shear Load (KG)</b>
1893274	60	100	60	M16x44	665.5	230.9
1893276	70	100	60	M16x44	978.2	339.4
1893255	45	10	8	M4x10	2.97	0.9
1893294	60	10	8	M4x10	8.69	2.4
1893254	45	15	15	M4x10	6.6	2
1893292	35	16	15	M4x10	4.4	1.4
1893269	60	16	15	M5x12	14.63	5.2
1893289	60	20	15	M6x18	28.05	9.2
1893279	45	20	20	M6x18	12.1	4.2
1893309	45	20	25	M6x18	11.55	4.2
1893304	45	25	15	M6x18	23.65	6.6
1893278	45	25	22	M8x20	19.58	6.6
1893270	45	25	30	M8x20	23.65	6.6
1893216	60	30	20	M8x20	66	20.8
1893232	45	30	25	M8x20	28.93	9.5
1893258	45	40	30	M8x20	52.91	17
1893247	45	40	20	M8x23	69.52	17
1893237	45	40	30	M8x23	52.91	17
1893302	45	40	35	M10x25	46.31	15