

Datasheet

## Fast Acting Glass Tube Fuse, 0.25-30A, 6.3x32mm

**Stock No:** 1778006, 1778008, 1778009, 1778030, 1778031, 1778032,  
1778033, 1778034, 1778035, 1778036, 1778037, 1778038

**RS Pro**



### Specifications:

#### Materials

Tube (Body): Transparent glass tube. No breaking or deformation is allowed.

Two brass end caps: Made of brass of good conductivity.

Coating of brass caps: Plating the surface with nickel. If the indication is added with "S", it needs to be plated with silver.

#### Interrupting Ratings

100mA~10A: 10000 amperes at 125V AC

100mA~1A: 35 amperes at 250V AC

1.2A~3.5A: 100 amperes at 250V AC

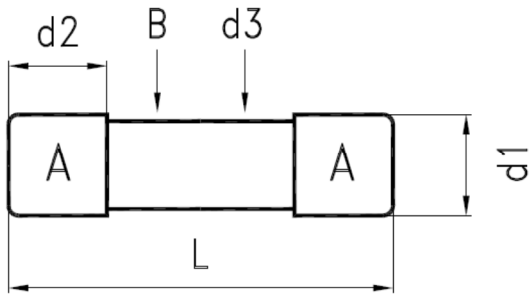
3.75A~10A: 200 amperes at 250V AC

12A~30A: 300 amperes at 32V AC ; 200 amperes at 125V ; 100 amperes at 250V

#### Operating Temperature

-55°C to +125°C

**Drawing (mm):**



NO.	Part Name		Volume
A	Brass Cap	Nickel Plating	2
B	Glass Tube	Transparent Glass	1
d1	Dia. of Cap	6.35±0.1mm	
d2	Height of Cap	6.45±0.1mm	
d3	Dia. of Glass	5.62±0.3mm	
L	Body of Fuse	31.75±0.75mm	

**Electrical Characteristic:**

Rating	100% Rating		135% Rating		200% Rating	
	Min.	Max.	Min.	Max.	Min.	Max.
100mA~30A	4 Hrs			1 Hrs		5 sec

	Nominal Resistance	Nominal Melting I <sup>2</sup> t
	Cold Ohms	A <sup>2</sup> Sec
250 mA	3.2340	0.0141
300 mA	2.8350	0.0243
1 A	0.1978	0.7200
2.5 A	0.0572	8.7581
3 A	0.0422	13.885
6 A	0.0205	70.378
6.3 A	0.1720	84.199
8 A	0.0136	137.35
15 A	0.0064	583.20
20 A	0.0045	1080.0
25 A	0.0036	2475.0
30 A	0.0024	4412.9

**Reference:**

Stock No	Rating amperes
1778030	250mA 250V
1778031	300mA 250V
1778006	1A 250V
1778008	2.5A 250V
1778009	3A 250V
1778032	6A 250V
1778033	6.3A 250V
1778034	8A 250V
1778035	15A 250V
1778036	20A 250V
1778037	25A 250V
1778038	30A 250V