

## Datasheet

# Nitrile Rubber Seal, 21.54mm Bore, 28.58mm Outside Diameter, -10 to +80°C

RS Stock number 689-495



### Description:

These seals comprise a metal annulus to which a medium nitrile elastomeric ring of trapezoidal cross-section is bonded. They provide high and low pressure sealing for ports on fluid systems where mineral based hydraulic fluids or mineral based engine lubricating oils are present.

Available in both metric and BSP-based Imperial sizes

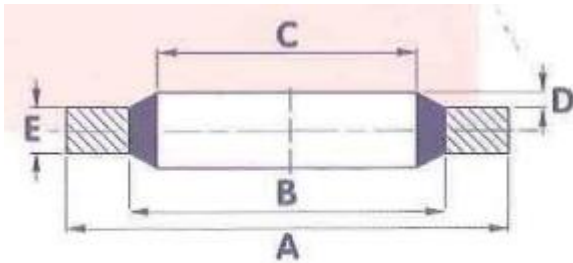
Hardness: 1 RHD 85-95

Temperature range: -30°C to +110°C

**Note:** The width (or thickness) quoted for the self-centralising bonded washers relates to the thickness of the fibre part of the washer.

### Specifications

Inside Diameter:	21.54mm
Material:	Nitrile Rubber
Maximum Operating Temperature:	+80°C
Minimum Operating Temperature:	-10°C
Outside Diameter:	28.58mm
Thickness:	2.5mm
Type:	Bonded Seal



**PLAIN**

REFERENCE	SIZE (INCHES)		A	B	C	D	E	APPROX BURST PRESSURE (BAR)
	BSP	BOLT	+0.13 -0.00	+0.10 -0.10	+0.10 -0.10		+0.15 -0.15	
	-	6BA	6.35	4.09	3.05	0.20/ 0.45	1.22	2150
	-	4BA	7.26	5.26	4.12			1570
	-	2BA	8.38	6.35	5.21			1375
	-	1/4	13.21	8.00	6.86			2450
	-	1/4	13.34	9.53	6.99			1700
	-	5/16	13.34	9.53	8.31			1700
	-	5/16	14.22	10.04	8.64		1750	
689-467	1/8	3/8	15.88	11.84	10.37	0.25/ 0.51	2.03	1500
	-	0.4	18.36	12.45	11.26			1950
	-	7/16	19.05	13.08	11.69			1900
689-473	1/4	1/2	20.57	15.21	13.74			1550
	-	9/16	22.23	16.39	14.86			1575
	-	0.6	22.23	17.30	15.83			1310
	-	5/8	25.40	18.75	16.51			1550
689-489	3/8	-	23.80	18.75	17.28			1260
	-	11/16	25.40	19.69	18.16			1320
	-	3/4	26.92	21.21	19.69			1260
689-495	1/2	13/16	28.58	23.01	21.54			1150
	-	7/8	31.75	24.97	23.49			1250
	-	15/16	33.27	26.04	24.26			1275
689-502	3/4	1.0	34.93	28.53	27.05			1060
	-	1.1/16	38.61	30.61	27.82			1250
	-	1.1/8	36.58	30.86	29.33			900
	-	7/8	38.10	32.29	30.81			900
	-	1.1/4	41.40	35.69	32.64			3.38
689-518	1.0	1.5/16	42.80	36.88	33.89	2.50	810	