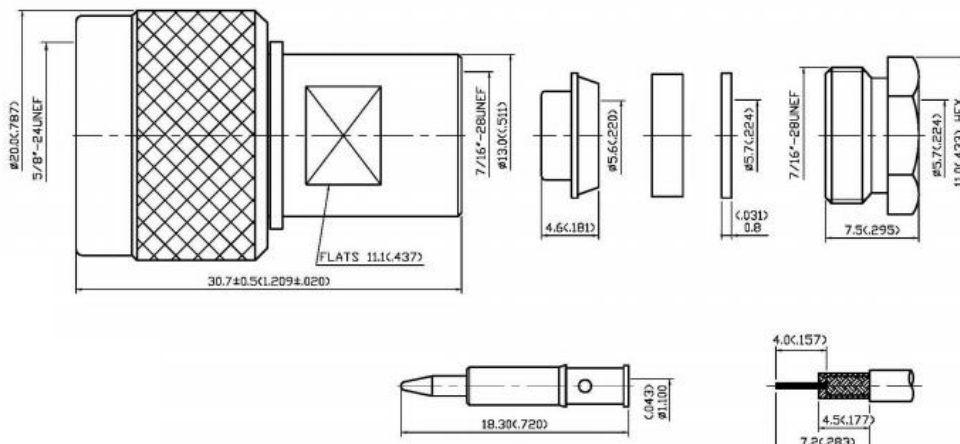


# Datasheet

## RS Straight Cable Mount SMA Connector, jack, Crimp Termination, Reverse Polarity

RS Stock number [546-2835](#)

Dimensions: (mm)



### Specifications

Materials :

- Bodies: Brass Per JIS-C3804
- Centre Contact: Beryllium Copper Per ASTM b196 UNS C17300
- Insulation: Teflon Per ASTM D1457 and ASTM D1710

Electrical:

- Frequency Range: DC-11 GHz
- Nominal Impedance: 50OHM
- Working Voltage: 500 Volts Max
- Proof Voltage: 1000 Volts
- VSWR: 1.3 Max

Mechanical

- Interface in Accordance with: MIL-STD-348A

Environmental

- Operating Temperature Range: 65 °C to + 165 °C

No.	Description	Material	Q'TY	Finish
1	Body	Brass	1	Gold 3µ" min
2	Insulation	Teflon	1	None
3	Centre Contact	Brass	1	Gold 50µ" min
4	Crimp Ferrule	Brass	1	Gold