

Model Number Coding

BGC H 25 BN - 2 - UUAM - L 1500 - P - Z1 - II C

Slide type :
BGX : non-cage
BGC : cage

Assembly height :
H : high assembly
S : low assembly
X : special assembly

Model : 15,20,25,30,35,45,55

Type and flange :
BN : no flange/standard
BL : no flange/long
BE : no flange/extra long
BS : no flange/short
FN : flange/standard
FS : flange/short
FL : flange/long
FE : flange/extra long

Q'ty of carriage

Seal Combination

Rail type : L (standard) , C (bolt up from bottom) , M(steel band)
,S (bellow) ,X (special drilling)

Rail length (mm)

Accuracy :
N : normal
H : high
P : precision
SP : super-precision
UP : ultra-precision

Preload :
ZF : clearance
Z0 : zero preload
Z1 : light preload
Z2 : medium preload
Z3 : heavy preload

Two rails in parallel

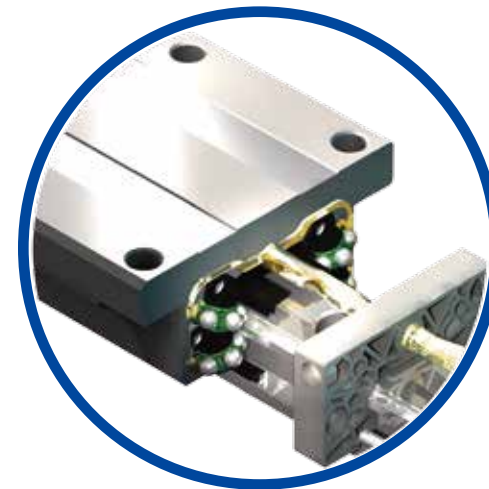
Surface Treatment:

- :
C : Hexavalent Chromium Coating
D : Trivalent Chromium Coating
R : Chromium Fluoride Coating
N : Nickel Plating
B : Black Oxide
K : Black Chromium
P : Phosphate Coating



STAF Linear Guide

One profile for All.



High accuracy
Low Noise
Smooth Traveling

www.staf.com.tw

STAF Seal combination

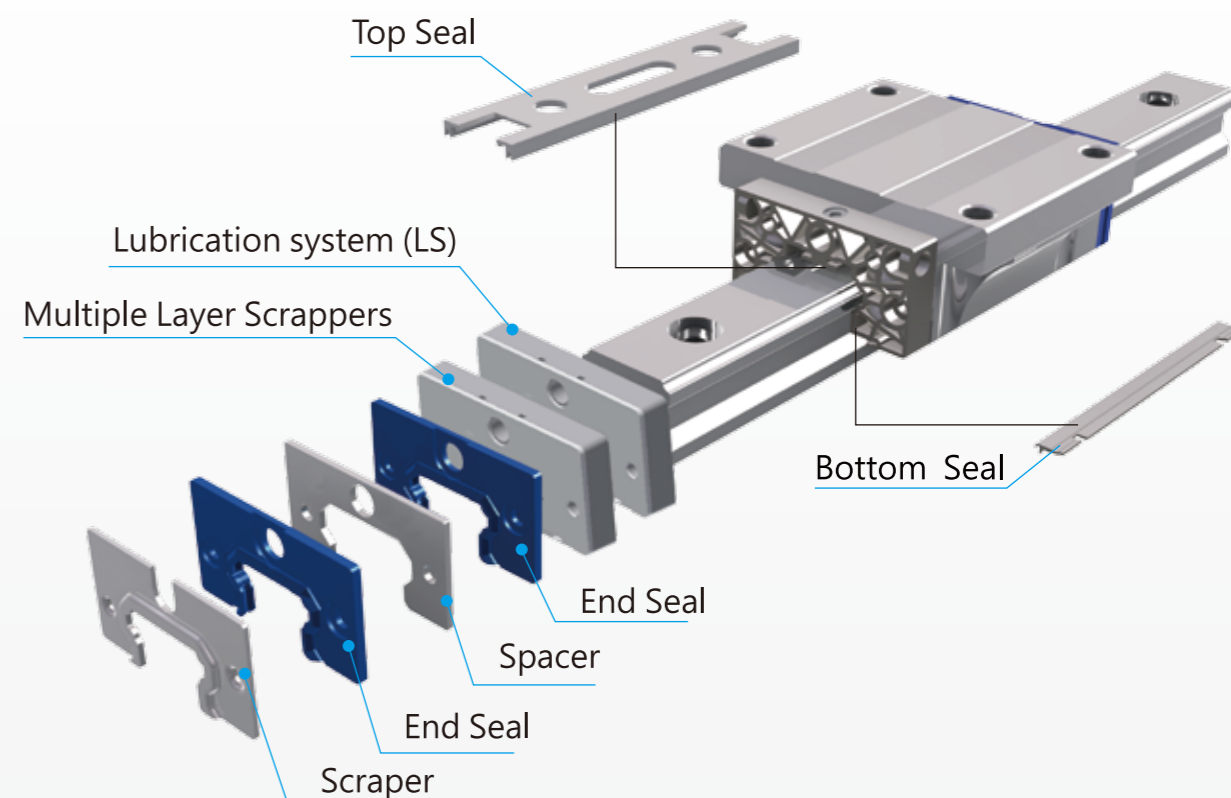


| Standard Seals | | Low Friction Seals (LFS) | | Reinforced Side Seals (RSS) | |
|----------------|---|--------------------------|--|-----------------------------|---|
| Code | Explain | Code | Explain | Code | Explain |
| -- | End Seal + Side Seal | AL | LFS + Side Seal | AB | End Seal + RSS |
| UU | End Seal | UL | LFS | SB | End Seal + RSS + Inner Seal |
| SS | End Seal + Side Seal + Inner Seal | SL | LFS + Side Seal + Inner Seal | DB | Double Seal + RSS |
| DD | Double Seal + Side Seal | DL | Double LFS + Side Seal | EB | Double Seal + RSS + Inner Seal |
| EE | Double Seal + Side Seal + Inner Seal | EL | Double LFS + Side Seal + Inner Seal | FB | End Seal + RSS + Inner Seal + Scrapper |
| FF | End Seal + Side Seal + Inner Seal + Scrapper | FL | LFS + Side Seal + Inner Seal + Scrapper | GB | Double Seal + RSS + Inner Seal + Scrapper |
| GG | Double Seal + Side Seal + Inner Seal + Scrapper | GL | Double LFS + Side Seal + Inner Seal + Scrapper | ZB | End Seal + RSS + Scrapper |
| ZZ | End Seal + Side Seal + Scrapper | ZL | LFS + Side Seal + Scrapper | KB | Double Seal + RSS + Scrapper |
| KK | Double Seal + Side Seal + Scrapper | KL | Double LFS + Side Seal + Scrapper | | |

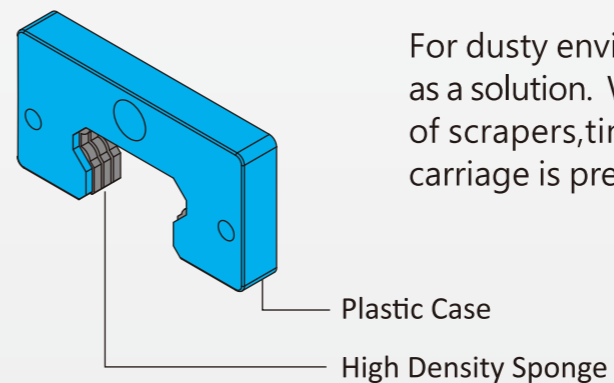


| Lubrication system (LS) | | Additional | |
|-------------------------|------------------|------------|-------------------------|
| Code | Explain | Code | Explain |
| A | Self-Lubrication | M | Multiple Layer Scrapers |

STAF Dust-Proof Solution



Multi-Layer-Scrapper (MLS)



For dusty environments, OME provides Multi-Layer-Scrapper as a solution. With stacking structure composed by three layers of scrapers, tiny particles on the rail are wiped out, and the carriage is prevented from invasion.

Reinforced/Standard Side Seal

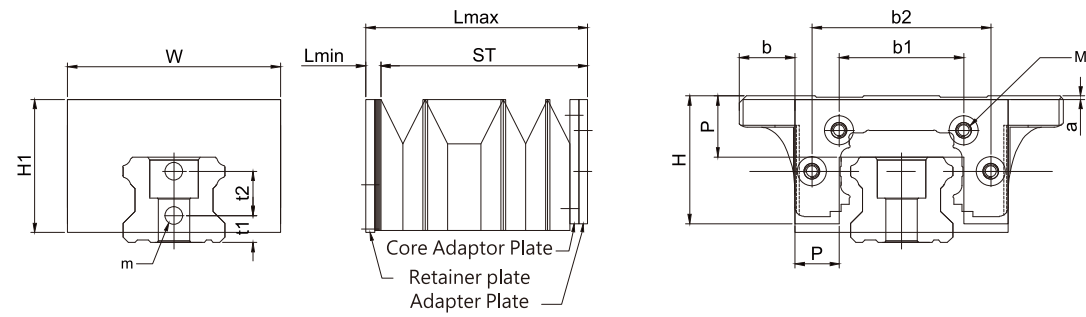


Double injection side seal (Reinforced Side Seal, RSS)
Composed by solid material (ABS) and soft material (TPU) which fits the rail perfectly against foreign particles.

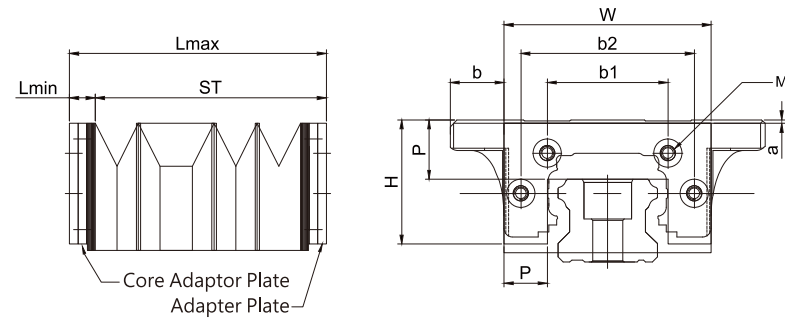


Single material side seal (Standard Side Seal)
Nylon seal with good prevention and lower driving resistance, suitable for general applications.

Carriage to Rail



Carriage to Carriage



L max: Max. Elongation Length

L min: Min. Compression Length

ST (Stroke) = Lmax – Lmin

Size specifications

Code Explanation: S : No Flange low assembly

H : No Flange high assembly

F : Flange

| Model | Size(mm) | | | | | | | | Other Size(mm) | | | | | | | |
|-------|----------|----|------|----|------|------|-----|-----|----------------|-------|-----|------|-----|-----|-----|------|
| | W | H | H1 | P | b1 | b2 | t1 | t2 | Screws | | a | | | b | | |
| | | | | | | | | | M | m | S | H | F | S | H | F |
| BGX15 | 36 | 21 | 24 | 10 | 18.4 | 27 | 3 | 7.5 | M3x6L | M3x6L | 0 | 4 | 0 | 1 | 1 | 8 |
| BGX20 | 42 | 23 | 27.5 | 10 | 24.6 | 34.5 | 3.7 | 10 | M3x6L | M3x6L | 0.5 | 2.5 | 0.5 | 0 | 1 | 8.5 |
| BGX25 | 48 | 28 | 30 | 10 | 28 | 40.2 | 6 | 10 | M3x6L | M3x6L | 0.8 | 7.8 | 0.8 | 0 | 0 | 12.5 |
| BGX30 | 60 | 34 | 38 | 15 | 34 | 50.5 | 6.8 | 12 | M3x6L | M4x8L | 1.2 | 4.2 | 1.2 | 0 | 0 | 15 |
| BGX35 | 70 | 40 | 43 | 15 | 43 | 60 | 9 | 12 | M4x8L | M4x8L | 0.5 | 7.5 | 0.5 | 0 | 0 | 15 |
| BGX45 | 87 | 50 | 57 | 20 | 55 | 75 | 9.1 | 16 | M4x8L | M4x8L | 0.9 | 10.9 | 0.9 | 0.5 | 0.5 | 16.5 |
| BGX55 | 100 | 55 | 60 | 20 | 64 | 88 | 15 | 16 | M4x8L | M4x8L | 2 | 12 | 2 | 0 | 0 | 20 |

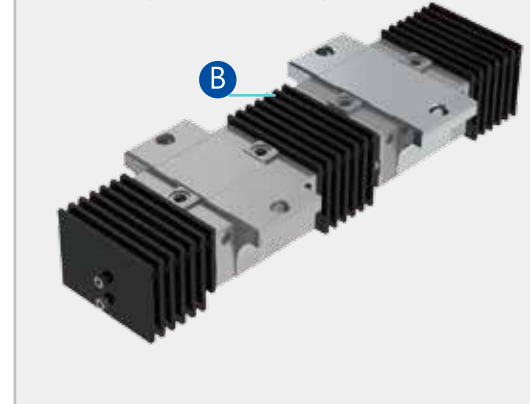
For example:

BGX15S: The height clearance (a) is 0 mm; The Width clearance (a) is 1 mm

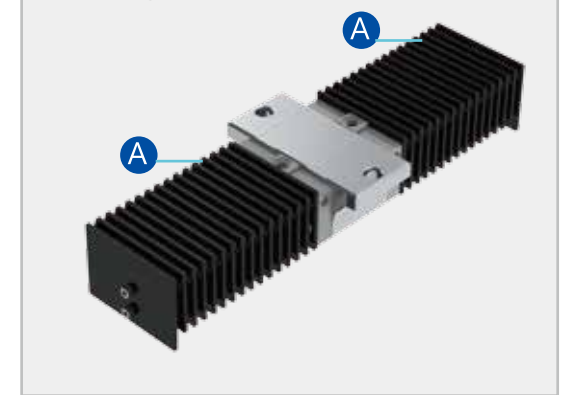
BGX25F: The height clearance (a) is 0.8 mm; The Width clearance (a) is 12.5 mm

Bellow

Carriage to Carriage



Carriage to Rail



Model Number Coding

BGC – 15 – 01000 – 00324 – A

Slide type :
BGX : non-cage
BGC : cage

Model :15, 20, 25, 30, 35, 45, 55

L max

L min

Locking Method :

A : Carriage to Rail

B : Carriage to Carriage