
Mita floor boxes.....	pages 8/2 to 8/5
Floor outlet boxes	page 8/2
Floor box accessories	page 8/4
Mita Cableline.....	pages 8/6 to 8/40
Cableline Prima 60	page 8/6
Cableline Prima 60 fittings	page 8/7
Cableline Prima 60 common components	page 8/8
Cableline Ultra 60	page 8/9
Cableline Ultra 60 fittings	page 8/10
Cableline Ultra 60 common components.....	page 8/12
Cableline Ambassador	page 8/13
Cableline Ambassador and Cableline Plus for Ambassador	page 8/14
Cableline Classic.....	page 8/19
Cableline Plus for Classic.....	page 8/20
Cableline Envoy.....	page 8/25
Cableline Plus for Envoy	page 8/26
Cableline Solo	page 8/31
Cableline Solo fittings.....	page 8/32
Cableline Solo common components	page 8/34
Cableline Duo.....	page 8/36
Cableline Duo fittings	page 8/37
Cableline Duo fittings and common components.....	page 8/38
Mita Cableline Powertrack.....	pages 8/41 to 8/43
Cableline Powertrack	page 8/41
Ambassador Powertrack.....	page 8/41
Cableline Powertrack	page 8/42
Classic Powertrack.....	page 8/42
Envoy Powertrack	page 8/42
Duo Powertrack.....	page 8/43
Mita Consort.....	pages 8/44 to 8/59
Consort Delta 105	page 8/44
Consort Delta 105 fittings.....	page 8/45
Consort Delta 105 components	page 8/46
Consort Dado trunking	page 8/48
Consort Dado fittings	page 8/49
Consort Dado large radius bends	page 8/51
Consort Dado accessories.....	page 8/51
Mita Ladders.....	pages 8/60 to 8/76
KHZSP ladder and accessories	page 8/60
KHZP ladder and accessories.....	page 8/63
KHZ ladder and accessories	page 8/66
KHZPV ladder and accessories	page 8/69
Covers	page 8/72
Ladder accessories	page 8/73
Ladder cable clamps.....	page 8/75
Ladder support work.....	page 8/76





- 292mm x 201mm cut out offering choice of 3 or 4 compartment
- High quality moulded grey trim
- Self closing lid & 'parking facility'
- Lid and cable guides can be removed by hand & turned through 180° degrees
- Pre-galvanised lower box with 20/25mm knockouts for cable entry
- Dual quick fix securing clamps (panel plus carpet thickness of 18-49mm)
- This unit is available pre-wired.

Also available 'Intercell' raised flooring system – integral floor panel and outlet box, please contact Schneider Electric.



Floor outlet box

Overall dimensions:
310 x 220 x (100 or 75mm) deep.
Floor panel cut out 292 x 201mm.
3 compartment base box c/w hinged lid & grey carpet trim.

Article number	Depth	Part number	Qty
	120mm	FBX 120	1
5251 021	100mm	FBX 100	1
5251 010	75mm	FBX 75	1
	65mm	FBX 65	1
		(3 comp only)	
	120mm	FBXD 120	1

Divider

To convert 3 compartment box to 4 compartment box.

Article number	Depth	Part number	Qty
5251 101	100mm	FBD 100	1
5251 110	75mm	FBD 75	1
For FBXD 120 box only	50mm	FBDD 50	1

Locking device

Where restricted access to a floor box is required a locking device can be supplied for initial installation or can be retro fitted.

Pre-wired floor outlet box

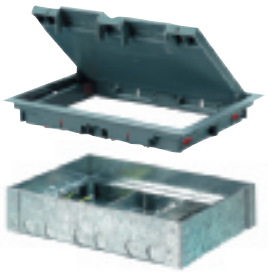
Article number	Description	Part number	Qty
5251 030	Standard 32A 3 metre unfused tap off wired to a twin socket	FBPW 10	1
	Standard 32A 3 metre unfused off wired to two twin sockets	FBPW 20	1
	Standard 13A 5 metre fused tap off wired to two twin sockets	FBPW 30	1
	Standard 13A 5 metre fused tap off wired to a twin socket	FBPW 40	1

Additional plates shown are available at extra cost.

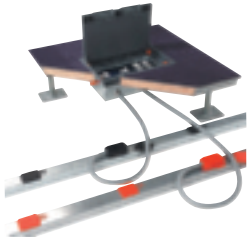




Slab box			
Article number	Description	Part number	Qty
5150 869	3 compartment	FSBX 3	1
5150 870	4 compartment	FSBX 4	1



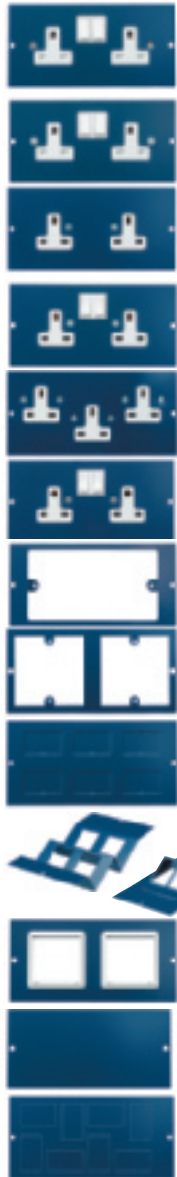
For screeded floors			
Outlet Unit, hinged lid, grey carpet trim and base			
Conduit fed screeded unit			
Article number	Size/Description	Part number	Qty
3 Compartment			
5150 791	(Conduit entry, screed depth 60-75mm)	UTB 0360	1
5150 866	(Conduit entry, screed depth 75-90mm)	UTB 0375	1
4 Compartment			
5150 867	(Conduit entry, screed depth 60-75mm)	UTB 0460	1
5150 868	(Conduit entry, screed depth 75-90mm)	UTB 0475	1



Please note, in certain installations eg, shallow box systems, it may not be possible to install a CAT6 solution. Please check suitability with us before placing your order.

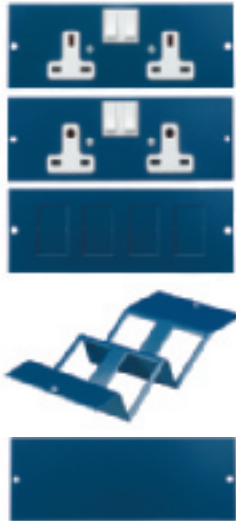
3 compartment 1.2mm plate, dimensions 173 x 87mm

Article number	Description	Part number	Floor outlet box type						Qty
			FBXD120 FBX120 FBX100	FBX75	FBX65	FSBX	UTB	UTO FT065 FT060	
5250 305	Twin 13A SSO BS1363 (complete) (Dual Earth as standard)	Q301	✓	✓	✓	✓			1
-	Twin 13A SSO BS1363 Clean Earth (complete) (Dual Earth as standard)	Q301CE	✓	✓	✓	✓			1
5250 310	Twin 13A SO BS1363 (complete)	Q310	✓	✓	✓	✓	✓	✓	1
5250 315	Twin 13A SSO BS1363 (complete) (dual-earth as standard)	Q311					✓	✓	1
5250 320	3 x single 13A SO BS1363 (complete)	Q312	✓	✓	✓	✓	✓	✓	1
5250 325	Twin 13A Non Standard C/E SSO BS5733 (complete)	Q313	✓	✓	✓	✓	▲	▲	1
5250 330	To accept moulded twin gang accessory #	Q314	✓	*		✓	Data only	Data only	1
5250 365	To accept 2 standard 86 x 86mm UK wall # plates (data only) (for CAT5e and CAT6)	Q321	✓	✓	✓	✓	Outer Comp Only	Outer Comp Only	1
5250 370	To accept 6 x LJ6C/RJ45 (for CAT5e and CAT6) #	Q322	✓	✓	✓	✓	✓	✓	1
-	To accept 4 x LJ6C/RJ45 (for CAT5e and CAT6) #	Q328	✓						1
-	To accept 4 x LJ6C/RJ45 (for CAT5e and CAT6) #	Q329	✓						1
5250 375	2 x Euro 50 x 50mm frames (complete) #	Q323	✓	✓	✓	✓	✓	✓	1
5250 390	Blank Plate	Q326	✓	✓	✓	✓	✓	✓	1
-	To accept 8 x LJ6C/RJ45 (for CAT5e and CAT6) #	Q325	✓	✓	✓	✓	✓	✓	1



8

4 compartment 1.2mm steel plate, dimensions 173 x 65mm



Article number	Description	Part number	Floor outlet box type			Qty
			FBXD120 FBX120 FBX100	FBX75	UTB UTO FT065 FT060	
• 5250 515	Twin 13A SSO BS1363 (complete) (Dual Earth as standard)	Q411	✓	✓	✓	1
• 5250 525	Twin 13A N/S C/E SSO BS5733 (complete)	Q413	✓	✓	▲	1
5250 570	To accept 4 x LJ6C/RJ45 #	Q422	✓	✓	✓	1
-	To accept 4 x LJ6C/RJ45 (for CAT5e and CAT6) #	Q428	✓			1
5250 590	Blank Plate	Q426	✓	✓	✓	1

*: Height restriction 34mm (Allow for moulded plate thickness when calculating available headroom)

▲ Height restriction 65mm or greater

• Due to space requirements for plug tops, it is not recommended that power plates are installed adjacent to each other in a four compartment box.



Cableline Prima 60 is a 3 compartment trunking system with a stylish profile. Prima 60 has been designed for use in power and high density CAT5e, CAT6, shielded and 10Gig structured cabling solutions.

With adjustable bends and a multi-configurable tee, Prima 60 has a sleek and contemporary style.

- Lengths of 3m
- Colour - white (RAL colour options available)
- BS4678 Pt.4, BS7671 (IEE regs) BS6701 (2004), Cenelec (BSEN50173 / EN50173), ANSI/TIA/EIA568B, TIA569B, ISO/IEC11801
- Powertrack versions available please contact Schneider Electric for further details
- 3 compartments
- 150 x 60mm
- Adjustable bends allow movement of +/- 5°
- Multi-configurable tee allow for 50mm bend radius to be maintained
- Screw fit fittings
- Accommodates socket mounting boxes up to 50mm deep
- Pre-punched steel divider where screening is required
- Meets and exceeds requirements of European and International Data Standards
- Accepts all leading wiring accessories
- Lower lid acts as cable shelf during installation



Trunking assembly

Part number	Qty
CA3W	2 x 3m

Spacing lid cover

Part number	Qty
CCS3W	10

8



External angle

Part number	Qty
CAX3W	1



Internal angle	
Part number	Qty
CAI3W	1



Joint cover	
Part number	Qty
CAJ3W	1



End caps	
Part number	Qty
CAS3W	2



Flat angle	
Part number	Qty
CAF3W	1



Flat tee	
Part number	Qty
CAT3W	1

Note: Flat Tee is supplied with 1xCATB1W and 1xCATB2W



Prima to Delta converter	
Part number	Qty
CAC3W	1



Screening divider	
Part number	Qty
SS60	4x1.5m

For continued screening divider around external/ internal angles	
Part number	Qty
External SSX60	1
Internal SSI60	1



Earth tags	
Part number	Qty
SET1	10

Oval bell mouth bush	
Part number	Qty
BMB	10

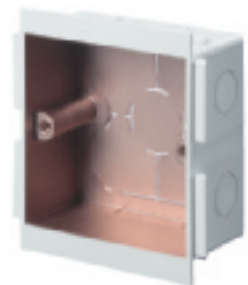
Where cabling passes through knockouts, a bell mouth bush can be supplied which fits into the knockouts preventing any potential snagging of sensitive cabling.



Rear cable entry box		
Part number		Qty
CBB3		1



Socket mounting boxes		
Size	Part number	Qty
1 gang 25mm deep	CLB 31W	10
1 gang vertical mounting box 25mm deep	CLB 314W	10
1 gang 35mm deep	CLB 41W	10
2 gang 25mm deep	CLB 32W	10
2 gang 35mm deep	CLB 42W	10
1 gang 50mm deep	CLB 51W	10
2 gang 50mm deep	CLB 52W	10



Screened socket mounting boxes		
Size	Part number	Qty
1 gang 25mm deep	CLBS 1W	10
1 gang vertical mounting box 25mm deep	CLBS 14W	10
1 gang 35mm deep	CLBS 3W	10
2 gang 25mm deep	CLBS 2W	10
2 gang 35mm deep	CLBS 4W	10
1 gang 50mm deep	CLBS 5W	10
2 gang 50mm deep	CLBS 6W	10



MCB/RCD housing complete with DIN mounting rail		
	Part number	Qty
Profile: Ultra 60 housing unit only	DCH 3W	1
Housing unit with cover	DCHC 3W	1



Extension collars		
Size	Part number	Qty
1 gang 10mm deep	CEC 110W	10
1 gang 19mm deep	CEC 119W	10
2 gang 10mm deep	CEC 210W	10
2 gang 19mm deep	CEC 219W	10



Socket mounting plate		
Type	Part number	Qty
1 gang	CTMP 1W	15
2 gang	CTMP 2W	10



Mounting frames for 45 x 45mm accessories		
Type	Part number	Qty
1 gang	ATMF 451W	15
2 gang	ATMF 452W	10

Mini trunking adaptors self adhesive		
Size	Part number	Qty
16 x 16mm	CLA 31W	5
25 x 16mm	CLA 32W	5

Please Note. Images for illustration purposes only. Fittings will vary according to profile selected.



With a dedicated data compartment and 62mm depth, Ultra 60 is designed to support and maintain the integrity of your data solution.

Ultra 60 offers 50mm bend radius for standard fittings, whilst incorporating an elegant and stylish look.

- Lengths of 3m
- Colour - white (RAL colour options available)
- BS4678 Pt.4, BS7671 (IEE regs), BS6701 (2004), BSEN50173, (GENELEC) BSEN50174-2, ANSI/TIA/EIA 568B, ISO IEC 11801
- Powertrack versions available please contact Schneider Electric for further details
- 2 compartments
- Deeper profile: 190 x 62mm
- Standard fittings provided for 50mm minimum bend radius
- Dedicated compartment for data cabling – holds up to 48 UTP or 42 STP CAT6 data cables
- Screw fix for fittings
- Accommodates socket mounting boxes up to 50mm deep
- Accepts all leading wiring accessories
- Increased depth allows for extra capacity for CAT5e, CAT6, CAT6 Augmented, CAT7 data and fibre optic cabling



Trunking assemblies

Part number	Qty
CU2W	2 x 3m

Divider

Part number	Qty
CUD2W size 60mm deep	3 x 1m
CUD1W size 30mm deep	3 x 1m

Spacing cover lid

Part number	Qty
CCS3W	10

Spare lids packs

Also available



External angle

Part number	Qty
CUXB 2W	1

Cover and back section for screw fix



Internal angle

Part number	Qty
CUIB 2W	1

Cover and back section for screw fix



Joint cover

Part number	Qty
CUJ 2W	1



End caps

Part number	Qty
CUS 2LW (LH)	2
CUS 2RW (RH)	2



Flat angle complete with integral data cable guides

Part number	Qty
CUF 2RW (Riser)	1
CUF 2DW (Dropper)	1

8



Flat tee

Part number	Qty
CUT 2RW (Riser)	1
CUT 2DW (Dropper)	1



Screening divider with oval knockouts at 300mm intervals

Part number	Type	Qty
SS43	43 x 1mm	4 x 1.5m



For continued screening around external/internal angles

Part number	Qty
External SSX43	1
Internal SSI43	1



Earth tags

Part number	Qty
SET1	10



Oval bell mouth bush

Part number	Qty
BMB	10

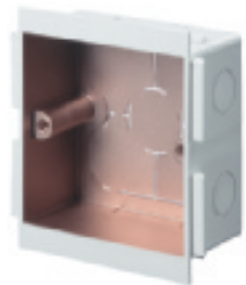
Where cabling passes through knockouts, a bell mouth bush can be supplied which fits into the knockouts preventing any potential snagging of sensitive cabling.



Rear cable entry box		
Part number		Qty
CBB3		1



Socket mounting boxes		
Size	Part number	Qty
1 gang 25mm deep	CLB 31W	10
1 gang vertical mounting box 25mm deep	CLB 314W	10
1 gang 35mm deep	CLB 41W	10
2 gang 25mm deep	CLB 32W	10
2 gang 35mm deep	CLB 42W	10
1 gang 50mm deep	CLB 51W	10
2 gang 50mm deep	CLB 52W	10



Screened socket mounting boxes		
Size	Part number	Qty
1 gang 25mm deep	CLBS 1W	10
1 gang vertical mounting box 25mm deep	CLBS 14W	10
1 gang 35mm deep	CLBS 3W	10
2 gang 25mm deep	CLBS 2W	10
2 gang 35mm deep	CLBS 4W	10
1 gang 50mm deep	CLBS 5W	10
2 gang 50mm deep	CLBS 6W	10

MCB/RCD housing complete with DIN mounting rail		
	Part number	Qty
Profile: Ultra 60 housing unit only	DCH 3W	1
Housing unit with cover	DCHC 3W	1

Extension collars		
Size	Part number	Qty
1 gang 10mm deep	CEC 110W	10
1 gang 19mm deep	CEC 119W	10
2 gang 10mm deep	CEC 210W	10
2 gang 19mm deep	CEC 219W	10

Socket mounting plate		
Type	Part number	Qty
1 gang	CTMP 1W	15
2 gang	CTMP 2W	10

Mounting frames for 45 x 45mm accessories		
Type	Part number	Qty
1 gang	ATMF 451W	15
2 gang	ATMF 452W	10

Mini trunking adaptors self adhesive		
Size	Part number	Qty
16 x 16mm	CLA 31W	5
25 x 16mm	CLA 32W	5

Please Note. Images for illustration purposes only. Fittings will vary according to profile selected.

Choose from 3 distinct profiles



DP3W 180 x 52mm

DS3W 180 x 52mm

DC3W 180 x 52mm

- Lengths of 3m
- BS4678 Pt.4, BS7671 (IEE regs), BS6701 (2004), BSEN50173, (CENELEC) BSEN50174-2, ANSI/TIA/EIA 568B, ISO IEC 11801
- Powertrack versions available please contact Schneider Electric for further details
- This unit is available pre-wired, please contact Schneider Electric for further details

Colours

Profile	Length	Colour	
		PVC White	Wood effect Light oak
DP3	2 x 3m	W	LO
DS3	2 x 3m	W	LO
DC3	2 x 3m	W	

RAL colour options available

Please suffix code with colour choice

Spare lid pack

Part number		Qty
CLL 3	Centre	2 x 3m
DPN 3	Chamfered Outer	2 x 3m
DSN 3	Skirting Base	2 x 3m
DCN 3	Contoured Outer	2 x 3m

Spacing cover lid

Part number	Qty
CCS3W	10

Finishes

The Wood Effect finish combines with moulded corner fittings and boxes in complimentary satin finish solid colour of beige. Patterned light oak fittings are also available.

Cableline Plus for Ambassador

Easy to use clip-on component which increases the capacity of Cableline Ambassador perimeter trunking to allow for high density cabling requirements. The actual components are illustrated in grey.

Trunking extension

Colour		
White - W		Please suffix code with colour choice
Light oak - LO		

DK 1 adds 85mm to the width of standard Cableline

Part number	Qty
DK 1	4 x 3m

External angle extension

Part number	Qty
DKX 1	1





Internal angle extension		
Part number		Qty
DKI 1		1



Joint cover extension		
Part number		Qty
DKJ 1		2

Flat stop end complete units for DP3		
Part number		Qty
DPE 4		2

Other fittings
Flat angles and tees are fabricated to order.

Mita Cableline Ambassador fittings



External angle including continuity piece		
Part number	To suit Ambassador profile	Qty
DPX 3	DP3	1
DSX 3	DS3	1
DCX 3	DC3	1

Data cable guide		
DCGA	Top/Bot	Qty
		2



Internal angle		
Part number	To suit Ambassador profile	Qty
DPI 3	DP3	1
DSI 3	DS3	1
DCI 3	DC3	1



Joint cover		
Part number	To suit Ambassador profile	Qty
DPJ 3	DP3	2
DSJ 3	DS3	2
DCJ 3	DC3	2



End caps		
Part number	To suit Ambassador profile	Qty
DPE 3	DP3	2
DSE 3L	DS3L.H	2
DSE 3R	DS3R.H	2
DCE 3	DC3	2

Flat angle unit		
Part number	To suit Ambassador profile	Qty
DPF 3	DP3	1
DSF 3C	DS3	1
DSF 3R	DS3	1
DCF 3	DC3	1

DSF3C has a chamfered inner lid and a skirting base outer lid.
DSF3R has a skirting base inner lid and a chamfered outer lid.

Data cable guide		
DCGA		2

Flat tee unit		
Part number	To suit Ambassador profile	Qty
DPT	DP3	1
DST 3C	DS3	1
DCT 3	DC3	1

Includes one crossover unit Ref. DLO3

MCB/RCD housing

Complete with DIN mounting rail

Colour - white

Part number	To suit	Qty
DCH 3W	Profile: DP3, DS3, DC3 Housing unit only	1
DCHC 3W	Housing unit with cover	1

Screening divider

Colour - N/A

Part number	Size	Qty
SS34	34mm x 1mm	4 x 1.5m

Earth tags

Part number	Qty
SET1	10

Cable retainers

Colour - white

Part number	Qty
Chamfered outer DPC3T	20
Centre DLC3M	10
Skirting Base DSC3T	20





Rear cable entry box

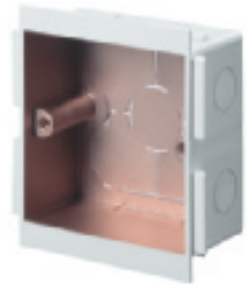
Part number	Qty
CBB3	1



Socket mounting boxes

Colour - white unless shown otherwise

Size	Part number	Qty
1 gang 25mm deep	CLB 31W	10
1 gang vertical mounting box 25mm deep	CLB 314W	10
1 gang 35mm deep	CLB 41W	10
2 gang 25mm deep	CLB 32W	10
2 gang 35mm deep	CLB 42W	10



Screened socket mounting boxes

Size	Part number	Qty
1 gang 25mm deep	CLBS 1W	10
1 gang vertical mounting box 25mm deep	CLBS 14W	10
1 gang 35mm deep	CLBS 3W	10
2 gang 25mm deep	CLBS 2W	10
2 gang 35mm deep	CLBS 4W	10



Extension collars

Size	Part number	Qty
1 gang 10mm deep	CEC 110W	10
1 gang 19mm deep	CEC 119W	10
2 gang 10mm deep	CEC 210W	10
2 gang 19mm deep	CEC 219W	10



Mounting frames for 45 x 45mm accessories

Type	Part number	Qty
1 gang	ATMF 451W	15
2 gang	ATMF 452W	10



Socket mounting plate

Type	Part number	Qty
1 gang	CTMP 1W	15
2 gang	CTMP 2W	10



Crossover unit

Colour - white

Size	Part number	Qty
For Ambassador	DLO 3R	5



Mini trunking adaptors self adhesive

Colour - white

Size	Part number	Qty
16 x 16mm	CLA 31W	5
25 x 16mm	CLA 32W	5



Cable hanger

Colour - white

Part number	Qty
CLH 3R	10

Choose from 3 distinct profiles



CL3W 145 x 40mm

CS3W 145 x 40mm

CP3W 145 x 40mm

- Lengths of 3m
- Colour - white (RAL colour options available)
- BS4678 Pt.4, BS7671 (IEE regs), BS6701 (2004), BSEN50173, (CENELEC) BSEN50174-2, ANSI/TIA/EIA 568B, ISO IEC 11801
- This unit is available pre-wired, please contact Schneider Electric for further details

Trunking assemblies

Part number	Qty
CL3W	2 x 3m
CS3W	2 x 3m
CP3W	2 x 3m

Spare lid pack

Part number		Qty
CLL 3W	Centre	2 x 3m
CLN 3W	Radius outer	2 x 3m
CSN 3W	Chamfered outer	2 x 3m

Spacing cover lid

Part number	Qty
CCS 3W	10

Easy to use clip-on component which increases the capacity of Cableline Classic perimeter trunking to allow for high density cabling requirements. The actual components are illustrated in grey.



Trunking extension

CK 1 adds 85mm to the width of standard Cableline

Part number	Qty
CK 1W	4 x 3m



External angle extension

Part number	Qty
CKX 1W	1



Internal angle extension

Part number	Qty
CKI 1W	1

8



Joint cover extension

Part number	Qty
CKJ 1W	2

Flat stop end complete units for DP3

Part number	Qty
CLS 4W	2

Other fittings

Flat angles and tees are fabricated to order.



External angle		
Part number	To suit Classic profile	Qty
CLX 3W	CL3	1
CSX 3W	CS3	1
CPX 3W	CP3	1



Internal angle		
Part number	To suit Classic profile	Qty
CLI 3W	CL3	1
CSI 3W	CS3	1
CPI 3W	CP3	1



Joint cover		
Part number	To suit Classic profile	Qty
CLJ 3W	CL3	2
CSJ 3W	CS3	2
CPJ 3W	CP3	2



End caps		
Part number	To suit Classic profile	Qty
CLS 3W	CL3	2
CSS 3LW	CS3 L.H	2
CSS 3RW	CS3 R.H	2
CPS 3W	CP3	2
Radius End Caps		
CLE 3W	CL3	1



Flat angle unit		
Part number	To suit Classic profile	Qty
CLF 3W	CL3	1
CSF 3CW	CS3	1
CSF 3RW	CS3	1
CPF 3W	CP3	1

CSF 3CW has a chamfered inner lid and a radius outer lid.
CSF 3RW has a radius inner lid and a chamfered outer lid.



Flat tee unit		
Part number	To suit Classic profile	Qty
CLT 3W	CL3	1
CST 3W	CS3	1
CPT 3W	CP3	1

Includes one crossover unit Ref. CLO3R



MCB/RCD housing

Complete with DIN mounting rail

Colour - white

Part number	To suit	Qty
BCH 3W	Profile: CL3, CS3, CP3 Housing unit only	1
BCHC 3W	Housing unit with cover	1

Screening divider

Colour - N/A

Part number	Size	Qty
SS23	23mm x 1mm	4 x 1.5m

Earth tags

Part number	Qty
SET1	10

Cable retainers

Colour - white

Part number	Qty
Chamfered outer CSC3T	20
Centre CLC3M	10
Outer radius CLC3T	20



Rear cable entry box		
Part number	Qty	
CBB3W	1	



Socket mounting boxes		
Size	Part number	Qty
1 gang 25mm deep	CLB 31W	10
1 gang vertical mounting box 25mm deep	CLB 314W	10
2 gang 25mm deep	CLB 32W	10



Screened socket mounting boxes		
Size	Part number	Qty
1 gang 25mm deep	CLBS 1W	10
1 gang vertical mounting box 25mm deep	CLBS 14W	10
2 gang 25mm deep	CLBS 2W	10



Extension collars		
Size	Part number	Qty
1 gang 10mm deep	CEC 110W	10
1 gang 19mm deep	CEC 119W	10
2 gang 10mm deep	CEC 210W	10
2 gang 19mm deep	CEC 219W	10



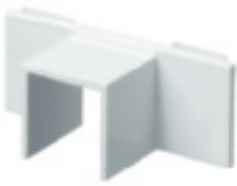
Mounting frames for 45 x 45mm accessories		
Type	Part number	Qty
1 gang	ATMF 451W	15
2 gang	ATMF 452W	10



Socket mounting plate		
Type	Part number	Qty
1 gang	CTMP 1W	15
2 gang	CTMP 2W	10



Crossover unit		
Size	Part number	Qty
For Classic	CLO 3R	5



Mini trunking adaptors self adhesive		
Size	Part number	Qty
16 x 16mm	CLA 31W	5
25 x 16mm	CLA 32W	5



Cable hanger	
Part number	Qty
CLH 3R	10

Please note. Images for illustration purposes only, fittings will vary according to profile selected.

Choose from 3 distinct profiles



EL3W 180 x 52mm

ES3W 180 x 52mm

ER3W 180 x 52mm

- Lengths of 3m
- Colour - white (RAL colour options available)
- BS4678 Pt.4, BS7671 (IEE regs), BS6701 (2004), BSEN50173, (CENELEC) BSEN50174-2, ANSI/TIA/EIA 568B, ISO IEC 11801
- Powertrack versions available
- This unit is available pre-wired, please contact Schneider Electric for further details

Trunking assemblies

Part number	Qty
EL3W	2 x 3m
ES3W	2 x 3m
ER3W	2 x 3m

Spare lid pack

Part number		Qty
CLL 3W	Centre	2 x 3m
ELN 3W	Radius outer	2 x 3m
DSN 3W	Skirting base	2 x 3m
DPN 3W	Chamfered outer	2 x 3m

Spacing cover lid

Part number	Qty
CCS 3W	10

Easy to use clip-on component which increases the capacity of Cableline Envoy perimeter trunking to allow for high density cabling requirements. The actual components are illustrated in grey.



Trunking extension

CK 1 adds 85mm to the width of standard Cableline

Part number	Qty
DK 1W	4 x 3m



External angle extension

Part number	Qty
DKX 1W	1



Internal angle extension

Part number	Qty
DKI 1W	1



Joint cover extension

Part number	Qty
DKJ 1W	2

Flat stop end complete units for DP3

Part number	Qty
ELS 4W	2

Other fittings

Flat angles and tees are fabricated to order.



External angle including continuity piece		
Part number	To suit Envoy profile	Qty
ELX 3W	EL3	1
ESX 3W	ES3	1
ERX 3W	ER3	1



Data cable guide		
Part number	To suit	Qty
DCGA	Top/Bot	2



Internal angle		
Part number	To suit Envoy profile	Qty
ELI 3W	EL3	1
ESI 3W	ES3	1
ERI 3W	ER3	1



Joint cover		
Part number	To suit Envoy profile	Qty
ELJ 3W	EL3	2
ESJ 3W	ES3	2
ERJ 3W	ER3	2



End caps		
Part number	To suit Envoy profile	Qty
ELS 3W	EL3	2
ESS 3LW	ES3 L.H	2
ESS 3RW	ES3 R.H	2
ERS 3LW	ER3 L.H	2
ERS 3RW	ER3 R.H	2

Flat angle unit		
Part number	To suit Envoy profile	Qty
ELF 3W	EL3	1
ESF 3CW	ES3	1
ESF 3RW	ES3	1
ESF 3SW has a skirting base inner lid and a radius outer lid. ESF 3RW has a radius outer lid and a skirting base inner lid.		
ERF 3CW	ER3	1
ERF 3RW	ER3	1
ERF 3CW has a chamfered inner lid and a radius outer lid. ERF 3RW has a radius inner lid and a chamfered outer lid.		

Data cable guide		
Part number	To suit	Qty
DCGA	Top/Bot	2



Flat tee unit

Part number	To suit Envoy profile	Qty
ELT 3W	EL3	1
EST 3W	ES3	1
ERT 3W	ER3	1

Includes one crossover unit Ref. DLO3

Data cable guide

DCGA	Top/Bot	2
------	---------	---

MCB/RCD housing

Complete with DIN mounting rail

Part number	To suit	Qty
DCH 3W	Profile: EL3, ER3, ES3 Housing unit only	1
DCHC 3W	Housing unit with cover	1

Screening divider

Part number	Size	Qty
SS34	34mm x 1mm	4 x 1.5m

Earth tags

Part number	Qty
SET1	10



Cable retainers

Part number	Qty
Chamfered outer DPC3T	20
Centre DLC3M	10
Square DSC3T	20

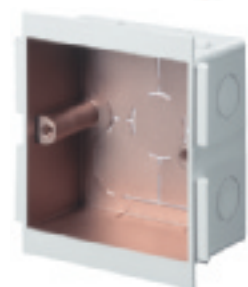




Rear cable entry box		
Part number		Qty
CBB3		1



Socket mounting boxes		
Size	Part number	Qty
1 gang 25mm deep	CLB 31W	10
1 gang vertical mounting box 25mm deep	CLB 314W	10
1 gang 35mm deep	CLB 41W	10
2 gang 25mm deep	CLB 32W	10
2 gang 35mm deep	CLB 42W	10



Screened socket mounting boxes		
Size	Part number	Qty
1 gang 25mm deep	CLBS 1W	10
1 gang vertical mounting box 25mm deep	CLBS 14W	10
1 gang 35mm deep	CLBS 3W	10
2 gang 25mm deep	CLBS 2W	10
2 gang 35mm deep	CLBS 4W	10



Extension collars		
Size	Part number	Qty
1 gang 10mm deep	CEC 110W	10
1 gang 19mm deep	CEC 119W	10
2 gang 10mm deep	CEC 210W	10
2 gang 19mm deep	CEC 219W	10



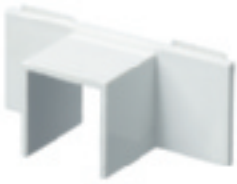
Mounting frames for 45 x 45mm accessories		
Type	Part number	Qty
1 gang	ATMF 451W	15
2 gang	ATMF 452W	10



Socket mounting plate		
Type	Part number	Qty
1 gang	CTMP 1W	15
2 gang	CTMP 2W	10



Crossover unit		
Size	Part number	Qty
For Envoy	DLO 3R	5



Mini trunking adaptors self adhesive		
Size	Part number	Qty
16 x 16mm	CLA 31W	5
25 x 16mm	CLA 32W	5



Cable hanger	
Part number	Qty
CLH 3R	10

Available in dado or skirting profile, Solo is designed to give maximum capacity within a compact profile.



TP1W 150 x 52mm

TS1W 150 x 52mm

- Single, twin or three compartment
- A stylish and compact trunking
- Removable walls form one large compartment
- Dividing walls feature pre-punched cable entry points, for ease of installation
- Contained under one lid
- Fittings simply clip into place. Optional fixing bracket for screw fixing
- Lengths of 3m
- Colour - white (RAL colour options available)
- BS4678 Pt.4, BS7671 (IEE regs), BS6701 (2004), BSEN50173, (CENELEC) BSEN50174-2, ANSI/TIA/EIA 568B, ISO IEC 11801
- This unit is available pre-wired, please contact Schneider Electric for further details

Trunking assemblies

Part number	Qty
TP1W sold complete with divider (not fitted) 2 x 3m	2 x 3m
TS1W sold complete with divider (not fitted) 4 x 1.5m	2 x 3m

Spare lid pack

Part number	Qty
CLL 3W	2 x 3m

Spacing cover lid

Part number	Qty
CCS 3W	10

Data cable guide, when fixed into an external corner, enables cables to maintain a minimum 50mm bend radii.



Profile TS1W with data cable guide TSDCG1W fitted.



Spare divider

Part number	Qty
TPD 1W	4 x 1.5m
TSD 1W	4 x 1.5m



External angle extension including continuity pieces

Part number	Qty
TPX 1	1
TSX 1W	1



Data cable guide for TSIW only

Part number	Qty
TS DCG 1W	1

8



Internal angle

Part number	Qty
TPI 1W	2
TSI 1W	2



Joint cover extension

Part number	Qty
TPJ 1W	2
TSJ 1W	2



End caps		
Part number	To suit Solo profile	Qty
TPS 1W	TP1	2
TSS 1LW	TS1	2
TSS 3RW	TS1	2



Flat angle unit		
Part number		Qty
TPF 1W		1
TSF 1CW	Riser	1
TSF 1CR	Dropper	1



Flat tee unit		
Part number		Qty
TPT 1W		1
TST 1W		1



Data cable guide		
Part number		Qty
DCGA		2

Fixing bracket		
Part number		Qty
TPFB 1W		2



Rear cable entry box		
Part number	Qty	
CBB3	1	



Socket mounting boxes		
Size	Part number	Qty
1 gang 25mm deep	CLB 31W	10
1 gang vertical mounting box 25mm deep	CLB 314W	10
1 gang 35mm deep	CLB 41W	10
2 gang 25mm deep	CLB 32W	10
2 gang 35mm deep	CLB 42W	10



Screened socket mounting boxes		
Size	Part number	Qty
1 gang 25mm deep	CLBS 1W	10
1 gang vertical mounting box 25mm deep	CLBS 14W	10
1 gang 35mm deep	CLBS 3W	10
2 gang 25mm deep	CLBS 2W	10
2 gang 35mm deep	CLBS 4W	10



Mounting frames for 45 x 45mm accessories		
Type	Part number	Qty
1 gang	ATMF 451W	15
2 gang	ATMF 452W	10

Socket mounting plate		
Type	Part number	Qty
1 gang	CTMP 1W	15
2 gang	CTMP 2W	10



Crossover unit

Size	Part number	Qty
For Solo	DLO 3R	5



Mini trunking adaptors self adhesive

Size	Part number	Qty
16 x 16mm	CLA 31W	5
25 x 16mm	CLA 32W	5



Cable hanger

Part number	Qty
CLH 3R	10



MCB/RCD housing

Complete with DIN mounting rail

Part number	To suit	Qty
DCH 3W	Profile: TP1, TS1 Housing unit only	1
DCHC 3W	Housing unit with cover	1

Screening divider

Part number	Size	Qty
SS23	23mm x 1mm	4 x 1.5m



Earth tags

Part number	Qty
SET1	10

Cable retainers for TS1 only

Part number	Qty
TSCR1W	10

A large capacity trunking system principally for structured cabling installations.



EP2W 210 x 52mm

- 210 x 52mm high impact thermoplastic profile
- 2 compartments offering increased cabling capacity
- Secure screw-on corner fittings
- Accepts all leading wiring accessories
- Lengths of 3m
- Colour - white (RAL colour options available)
- BS4678 Pt.4, BS7671 (IEE regs), BS6701 (2004), BSEN50173, (GENELEC) BSEN50174-2, ANSI/TIA/EIA 568B, ISO IEC 11801
- Powertrack versions available
- This unit is available pre-wired, please contact Schneider Electric for further details

Trunking assemblies

Part number	Qty
EP2W	2 x 3m

Spare lid pack

Part number	Qty
CLL 3W	2 x 3m

Spacing cover lid

Part number	Qty
CCS 3W	10

Divider - 50mm deep

Part number	Qty
EPD 2W	16 x 1.5m

Data cable guide (EPDCGIW), when fixed into an external corner, enables cables to maintain a minimum 50mm bend radii.





External angle including continuity piece		
Part number		Qty
EPX 2W		1



External angle data cable guide		
Part number		Qty
EP DCG 1W		1



Internal angle		
Part number		Qty
EPI 2W		1



Joint cover		
Part number		Qty
EPJ 2W	EL3	2



End caps		
Part number		Qty
EPS 2W		2



Flat angle unit		
Part number		Qty
EPF 2W		1

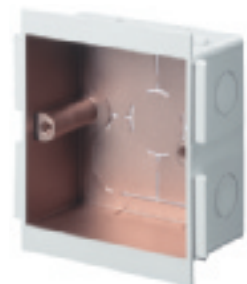


Data cable guide		
Part number		Qty
DCGA	Top/Bot	2

Flat tee unit		
Part number		Qty
EPT 2W		1
Includes one crossover unit Ref. DLO3R		

Data cable guide		
Part number		Qty
DCGA	Top/Bot	2





Screening divider

Part number	Size	Qty
SS34	34mm x 1mm	4 x 1.5m

Earth tags

Part number	Qty
SET1	10

Cable retainers

Part number	Qty
EPC 2W	10

Cableline Duo common components

Rear cable entry box

Part number	Qty
CBB3	1

Socket mounting boxes

Colour - white unless shown otherwise

Size	Part number	Qty
1 gang 25mm deep	CLB 31W	10
1 gang vertical mounting box 25mm deep	CLB 314W	10
1 gang 35mm deep	CLB 41W	10
2 gang 25mm deep	CLB 32W	10
2 gang 35mm deep	CLB 42W	10

Screened socket mounting boxes

Size	Part number	Qty
1 gang 25mm deep	CLBS 1W	10
1 gang vertical mounting box 25mm deep	CLBS 14W	10
1 gang 35mm deep	CLBS 3W	10
2 gang 25mm deep	CLBS 2W	10
2 gang 35mm deep	CLBS 4W	10



Extension collars

Size	Part number	Qty
1 gang 10mm deep	CEC 110W	10
1 gang 19mm deep	CEC 119W	10
2 gang 10mm deep	CEC 210W	10
2 gang 19mm deep	CEC 219W	10



Mounting frames for 45 x 45mm accessories

Type	Part number	Qty
1 gang	ATMF 451W	15
2 gang	ATMF 452W	10



Socket mounting plate

Type	Part number	Qty
1 gang	CTMP 1W	15
2 gang	CTMP 2W	10



Crossover unit

Size	Part number	Qty
For Duo	DLO 3R	5



Mini trunking adaptors self adhesive

Size	Part number	Qty
16 x 16mm	CLA 31W	5
25 x 16mm	CLA 32W	5



Cable hanger		
Part number		Qty
CLH 3R		10

MCB/RCD housing		
Complete with DIN mounting rail		
Part number	To suit	Qty
DCH 3W	Profile: EP2 Housing unit only	1
DCHC 3W	Housing unit with cover	1



Cableline Powertrack combines all the benefits of Cableline Classic, Ambassador, Duo and Envoy systems with the advanced electrical power distribution capabilities of busbar technology.

The Powertrack busbar is factory fitted into one compartment, allowing data and telecommunication cables to be routed through the other compartments.

- Lengths of 3m
- BS4678 Pt.4

Ambassador Powertrack

- Size: 180 x 52mm

Colours		
Profile	Colour	
	PVC	Wood effect
	White	Light oak
DP3	W	LO
DS3	W	LO
DC3	W	

RAL colour options available
Please suffix code with colour choice

Fittings		
Profile	Colour	
	White	Light oak
DP3	W	LO
DS3	W	LO
DC3	W	
		Laminated

Trunking assemblies		
Part number	For Profile	Qty
DP 3PT	DP3	2 x 3m
DS 3PT	DS3	2 x 3m
DC 3PT	DC3	2 x 3m

Rear cable entry section		
Part number	For Profile	Qty
DPR 3	DP 3PT	1
DSR 3	DS 3PT	1
DCR 3	DC 3PT	1

Fixed end caps		
Part number	For Profile	Qty
DPE 3	DP3 PT	2
DSE 3L	DS3 PT	2
DSE 3R	DS3 PT	2
DCE 3	DC3 PT	2

Classic Powertrack

- Colour: white
- Size: 145 x 40mm

Trunking assemblies

Part number	For Profile	Qty
CL 3PTW	CL3W	2 x 3m
CS 3PTW	CS3W	2 x 3m
CP 3PTW	CP3W	2 x 3m

Rear cable entry section

Part number	For Profile	Qty
BLN 3W	CL 3PTW	1
BSN 3W	CS 3PTW	1
BCN 3W	CP 3PTW	1

Fixed end caps

Part number	For Profile	Qty
BLE 3W	CL3W PT	2
BSE 3LW	CS3W PT	2
BSE 3RW	CS3W PT	2
BCE 3W	CP3 PTW	2

Envoy Powertrack

- Colour: white
- Size: 180 x 52mm

Trunking assemblies

Part number	For Profile	Qty
EL3 PTW	EL3W	2 x 3m
ES3 PTW	ES3W	2 x 3m
ER3 PTW	ER3W	2 x 3m

Rear cable entry section complete with 2 joint covers

Part number	For Profile	Qty
ELR 3W	EL 3PTW	1
ESR 3W	ES 3PTW	1
ERR 3W	EP 3PTW	1

Fixed end caps

Part number	For Profile	Qty
ELS3W	EL3 PT	2
ESS3LW	ES3 PT LH	2
ESS3RW	ES3 PT RH	2
ERS3LW	ER3 PT LH	2
ERS3RW	ER3 PT RH	2

Duo Powertrack

- Colour: white
- Size: 210 x 52mm

Trunking assemblies

Part number	For Profile	Qty
EP 2PTW	EP2W	2 x 3m

Rear cable entry section complete with 2 joint covers

Part number	For Profile	Qty
EPR2W	EP 2PTW	1

Fixed end caps

Part number	For Profile	Qty
EPS2W	EP 2PTW	2

Cableline Powertrack common components

Mains connector

Part number	Qty
BLC 3	5



Take off unit

For ease of installation this unit is supplied fitted with single core cable.

Part number	Qty
BLP 3	5



Straight coupler

Part number	Qty
BLG 3	5



Cable link assembly

Part number	Qty
BLD 3A	1



Cable link kit

Part number	Qty
BLD 3F	1 kit



Consort Delta 105, with dimensions of 100 x 50mm is a single compartment pvc trunking with a stylish profile. Delta 105 has been designed for use in power and high density CAT5e and CAT6 structured cabling solutions.

Delta 105 has a contemporary look and the trunking features adjustable bends and a multi-configurable tee.



DA105W

- Lengths of 3m
- Colour - white (RAL colour options available)
- BS4678 Pt.4, BS7671 (IEE regs) BS6701 (2004), Cenelec (EN50174-2 / EN50173), ANSI/TIA/EIA568B, TIA569B, ISO/IEC11801
- Single compartment, readily dividable
- 100 x 50mm
- Adjustable bends allow movement +/- 5°
- Multi-configurable tee allow for 50mm bend radius to be maintained
- Clip on fittings
- Accommodates socket mounting boxes up to 35mm deep
- Pre-punched steel divider where screening is required
- Meets and exceeds requirements of European and International Data Standards

Trunking assemblies

Part number	Qty
DA105W	2 x 3m

Divider

Part number	Qty
DAHD105W	16 x 1.5m

8





External angle	
Part number	Qty
DAX105W	1



Internal angle	
Part number	Qty
DAI105W	1



Joint cover	
Part number	Qty
DAJ105W	2



End caps	
Part number	Qty
DAS105W	2



Flat angle	
Part number	Qty
DAF105W	1



Flat tee	
Part number	Qty
DAT105W	1

Note: Flat Tee is supplied with 1xDATB1 and DATBC



Screening divider	
Part number	Qty
SS105	4x1.5m

For continued screening divider around external/internal angles

Part number	Qty
External SSX105	1
Internal SSI105	1

Spares

Tee bridge/clip (DATB1 and DATBC) are also available



Socket mounting boxes

Size	Part number	Qty
1 gang 25mm	CTB 11W	10
1 gang 35mm	*CTB 21W	10

*Not suitable for use with CT 104W DADO trunking.



Socket mounting boxes

Size	Part number	Qty
2 gang 25mm	CTB 12W	10
2 gang 35mm	*CTB 22W	10

*Not suitable for use with CT 104W DADO trunking.



Socket mounting boxes

Size	Part number	Qty
1 gang - vertical 25mm	CTB 114W	10



Socket mounting plate

Size	Part number	Qty
1 gang	CTMP 1W	15
2 gang	CTMP 2W	10



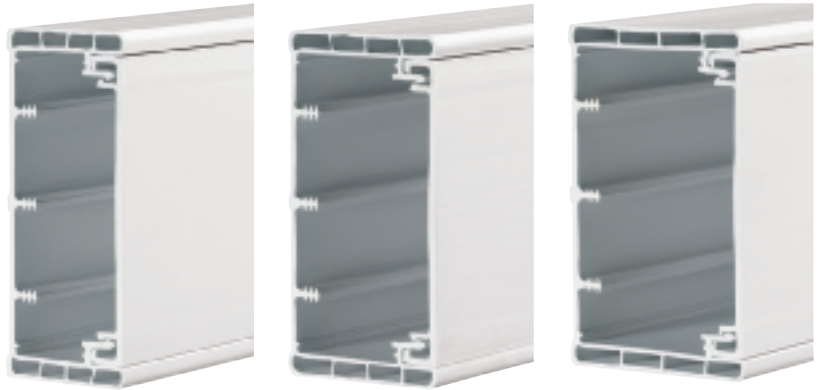


Mounting frames for 45 x 45mm accessories

Size	Part number	Qty
1 gang	ATMF 451W	15
2 gang	ATMF 452W	10

Mini trunking adaptors

Size	Part number	Qty
16 x 16mm	MFC 1W	10
25 x 16mm	MFC 2W	10



CT 104W 100 x 40mm

CT 105W 100 x 50mm

CT 106W 100 x 60mm

- Lengths of 3m
- Colour - white (RAL colour options available)
- BS4678 Pt.4, BS7671 (IEE regs), BS6701 (2004) BSEN50173, (CENELEC) BSEN50174-2, ANSI/TIA/EIA 568B, ISO IEC 11801
- This unit is available pre-wired
- Single compartment readily segregated with clip-in dividers
- Double locking lid for extra safety
- Fully segregated one and two gang socket boxes accepting wiring accessories from all leading manufacturers
- Complete range of moulded fittings for fast, cost effective installation and maintenance

Trunking assemblies

Size	Part number	Qty
100 x 40mm	CT 104W	2 x 3m
100 x 60mm	CT 105W	2 x 3m
100 x 60mm	CT 106W	2 x 3m



External angles

Size	Part number	Qty
100 x 40mm	CTO 104W	1
100 x 50mm	CTO 105W	1
100 x 60mm	CTO 106W	1



Internal angles

Size	Part number	Qty
100 x 40mm	CTI 104W	1
100 x 50mm	CTI 105W	1
100 x 60mm	CTI 106W	1



Joint covers and coupler

Size	Part number	Qty
100 x 40mm	CTJ 104W	2
100 x 50mm	CTJ 105W	2
100 x 60mm	CTJ 106W	2
100 x 40mm	CTC 40W	10



Flat angles

Size	Part number	Qty
100 x 40mm	CTF 104W	1
100 x 50mm	CTF 105W	1
100 x 60mm	CTF 106W	1
130 x 60mm (F)	CTF 136W	1

Note: Flat angle for CT136W is fabricated (F)



Flat tees

Size	Part number	Qty
100 x 40mm	CTT 104W	1
100 x 50mm	CTT 105W	1
100 x 60mm	CTT 106W	1



End caps and flat stop end

Size	Part number	Qty
100 x 40mm	CTS 104W	2
100 x 50mm	CTS 105W	2
100 x 60mm	CTS 106W	2
100 x 40mm	CTE 104W	5



Cable retainers

Size	Part number	Qty
100 x 40mm	CTR 104W	10
100 x 50mm	CTR 105W	10
100 x 60mm	CTR 106W	10



To comply with minimum bend radii recommendations as set out in EIA/TIA 568B

External angle

Size	Part number	Qty
100 x 40mm	CTOX 104W	1
100 x 50mm	CTOX 105W	1
100 x 60mm	CTOX 106W	1

Internal angle

Size	Part number	Qty
100 x 40mm	CTIX 104W	1
100 x 50mm	CTIX 105W	1
100 x 60mm	CTIX 106W	1

Flat angle

Size	Part number	Qty
100 x 40mm	CTFX 104W	1
100 x 50mm	CTFX 105W	1
100 x 60mm	CTFX 106W	1

Consort Dado accessories

Socket mounting boxes

Size	Part number	Qty
1 gang 25mm	CTB 11W	10
1 gang 35mm	*CTB 21W	10

*Not suitable for use with CT 104W DADO trunking.

Socket mounting boxes

Size	Part number	Qty
2 gang 25mm	CTB 12W	10
2 gang 35mm	*CTB 22W	10

*Not suitable for use with CT 104W DADO trunking.

Socket mounting boxes

Size	Part number	Qty
1 gang - vertical 25mm	CTB 114W	10



Socket mounting plate

Size	Part number	Qty
1 gang	CTMP 1W	15
2 gang	CTMP 2W	10

Mounting frames for 45 x 45mm accessories

Size	Part number	Qty
1 gang	ATMF 451W	15
2 gang	ATMF 452W	10

Mini trunking adaptors

Size	Part number	Qty
16 x 16mm	MFC 1W	10
25 x 16mm	MFC 2W	10

Dividers

Size	Part number	Qty
40mm deep	CTD 40W	16 x 1.5m
50mm deep	CTD 50W	16 x 1.5m
60mm deep	CTD 60W	16 x 1.5m

Mita wire cable tray features a unique design based on a double transverse wire, giving greater overall loading capacity, load carrying ability and a secure safety edge.

- 70mm standard depth offers greater carrying capacity and strength
- Safety Edge; avoids damage to cables or installer
- Quick Fit Couplers avoid the need for special tools
- Fast Fix Brackets and Clips reduce installation time
- Electro Zinc Steel Wired with 20 microns of zinc protection

Finish codes

EZ Electroplated
 HDG Hot Dip Galvanised
 SS Stainless Steel
 LZ Laminar zinc



aemsa wire cable tray - 3m lengths

Alt code	Part number	Finish	Qty
4511110	REZ35X100	EZ	24m
4511115	REZ35X150	EZ	12m
4511120	REZ35X200	EZ	12m
4511130	REZ35X300	EZ	12m
4511206	REZ60X60	EZ	24m
4511210	REZ70X100	EZ	12m
4511215	REZ70X150	EZ	12m
4511220	REZ70X200	EZ	6m
4511230	REZ70X300	EZ	6m
4511240	REZ70X400	EZ	6m
4511250	REZ70X500	EZ	6m
4511260	REZ70X600	EZ	6m
4511320	REZ105X200	EZ	6m
4511330	REZ105X300	EZ	6m
4511340	REZ105X400	EZ	6m
4511350	REZ105X500	EZ	6m
4511360	REZ105X600	EZ	6m
4512110	REG35X100	HDG	24m
4512115	REG35X150	HDG	12m
4512120	REG35X200	HDG	12m
4512130	REG35X300	HDG	12m
4512206	REG60X60	HDG	24m
4512210	REG70X100	HDG	12m
4512215	REG70X150	HDG	12m
4512220	REG70X200	HDG	6m
4512230	REG70X300	HDG	6m
4512240	REG70X400	HDG	6m
4512250	REG70X500	HDG	6m
4512260	REG70X600	HDG	6m
4512320	REG105X200	HDG	6m
4512330	REG105X300	HDG	6m
4512340	REG105X400	HDG	6m
4512350	REG105X500	HDG	6m
4512360	REG105X600	HDG	6m

aemsa wire cable tray is also available in stainless steel, please contact Schneider Electric for further details



Tray cover - 2m lengths

Alt code	Part number	Finish	Qty
4541106	TC60E	EZ	8m
4541110	TC100E	EZ	4m
4541115	TC150E	EZ	4m
4541120	TC200E	EZ	4m
4541130	TC300E	EZ	4m
4541140	TC400E	EZ	4m
4541150	TC500E	EZ	4m
4541160	TC600E	EZ	4m

Tray divider - 2m lengths

Alt code	Part number	Finish	Qty
4571510	DIV35E	EZ	20m
4571520	DIV70E	EZ	20m
4571530	DIV105E	EZ	20m

ID label

Alt code	Part number	Qty
4551485	IDLABEL	25

Fast coupler

Alt code	Part number	Finish	Qty
4530200	RC70105EZ	EZ	30
4532200	RC70105LZ	LZ	30

Quick fix clamp

Alt code	Part number	Qty
4561160	QFIXC	25

Fixing clamp

Alt code	Part number	Finish	Qty
4561120	FC1E	EZ	50
4562120	FC1H	HDG	50

Bolt croppers

Alt code	Part number	Qty
4580110	BOLTCROP1	1

Joining clamps

Alt code	Part number	Finish	Qty
4561110	JC1E	EZ	50
4562110	JC1H	HDG	50



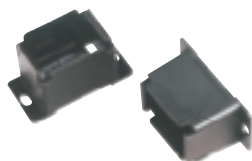
Side joints

Alt code	Part number	Finish	Qty
4561200	SJ35E	EZ	25
4561205	SJ70105E	EZ	25



Extendable joints

Alt code	Part number	Finish	Qty
4561150	EJOINTE	EZ	10



Insulating floor support bracket

Alt code	Part number	Finish	Qty
4571700	FSB	PVC	20

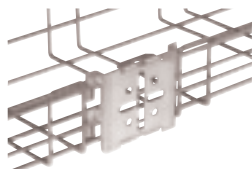


Illustration shows accessory plate fixing

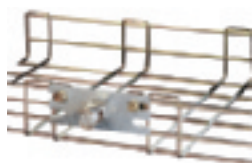
Wall bracket and accessory plate

Alt code	Part number	Finish	Qty
4571120	SHS1E	EZ	10
4571130	SHS2E	EZ	5



Flexible conduit take off plate

Alt code	Part number	Finish	Qty
4571315	FCTP202532E	EZ	10



Earthing clamp

Alt code	Part number	Finish	Qty
4571310	EDE	EZ	10



Fast fix bracket			
Alt code	Part number	Finish	Qty
4550110	SR100E	EZ	10
4550111	SR150E	EZ	10
4550112	SR200E	EZ	10
4550113	SR300E	EZ	10
4550114	SR400E	EZ	5
4550115	SR500E	EZ	5
4550116	SR600E	EZ	5



Horizontal support bracket			
Alt code	Part number	Finish	Qty
4550310	SO100E	EZ	10
4550315	SO150E	EZ	10
4550320	SO200E	EZ	10
4550330	SO300E	EZ	10



Horizontal support bracket			
Alt code	Part number	Finish	Qty
4551110	S100E	EZ	10
4551115	S150E	EZ	10
4551120	S200E	EZ	10
4551130	S300E	EZ	10
4551140	S400E	EZ	5
4551150	S500E	EZ	5
4551160	S600E	EZ	5
4552110	S100H	HDG	10
4552115	S150H	HDG	10
4552120	S200H	HDG	10
4552130	S300H	HDG	10
4552140	S400H	HDG	5
4552150	S500H	HDG	5
4552160	S600H	HDG	5

8



Horizontal support set			
Alt code	Part number	Finish	Qty
4551210	CS100E	EZ	2
4551215	CS150E	EZ	2
4551220	CS200E	EZ	2
4551230	CS300E	EZ	2
4551240	CS400E	EZ	2
4551250	CS500E	EZ	2
4551260	CS600E	EZ	2



Adjustable support bracket			
Alt code	Part number	Finish	Qty
4551510	CSO100E	EZ	2
4551515	CSO150E	EZ	2
4551520	CSO200E	EZ	2
4551530	CSO300E	EZ	2
4551540	CSO400E	EZ	2
4551550	CSO500E	EZ	2
4551560	CSO600E	EZ	2



Swivel pendant support

Alt code	Part number	Finish	Qty
4551410	PS5E	EZ	1
4571115	PSLPE	EZ	1



Pendant support

Alt code	Part number	Finish	Qty
4551910	C100E	EZ	1
4551915	C150E	EZ	1
4551920	C200E	EZ	1
4551930	C300E	EZ	1
4551940	C400E	EZ	1
4551950	C500E	EZ	1
4551960	C600E	EZ	1



Urail

Alt code	Part number	Finish	Qty
4551420	URAIL	EZ	4



Suspension support bracket

Alt code	Part number	Finish	Qty
4550410	SSO100E	EZ	4
4550415	SSO150E	EZ	4
4550420	SSO200E	EZ	4
4550430	SSO300E	EZ	4

Vertical suspension support

Alt code	Part number	Finish	Qty
4551315	VS150E	EZ	10
4551320	VS200E	EZ	10
4551330	VS300E	EZ	10
4551340	VS400E	EZ	5
4551350	VS500E	EZ	5
4551360	VS600E	EZ	5
4552315	VS150H	HDG	10
4552320	VS200H	HDG	10
4552330	VS300H	HDG	10
4552340	VS400H	HDG	5
4552350	VS500H	HDG	5
4552360	VS600H	HDG	5

Heavy duty suspension support

Alt code	Part number	Finish	Qty
4551620	VSR200E	EZ	4
4551630	VSR300E	EZ	4
4551640	VSR400E	EZ	4
4551650	VSR500E	EZ	4
4551660	VSR600E	EZ	4

Suspension support and channel fixing bracket

Alt code	Part number	Finish	Qty
4551430	CS40E	EZ	30
4551440	C SUPPORT	EZ	10
4551450	L SUPPORT	EZ	10

Suspension brackets

Alt code	Part number	Finish	Qty
4571408	GTV8	EZ	10
4571410	GTV10	EZ	10
4571416	GHS6	EZ	20
4575418	GHS8	EZ	20
4571436	GVS6	EZ	20
4571438	GVS8	EZ	20



Threaded rod

Alt code	Part number	Finish	Qty
4551467	M610E	EZ	10
4551470	M805E	EZ	10
4551480	M810E	EZ	10
4551481	CVM6E	EZ	50
4551482	CVM8E	EZ	50

Screws

Alt code	Part number	Finish	Qty
4721912	M6X12E	EZ	150
4571110	M6X20E	EZ	150
4725912	M6X12S	SS	150



Ordering information

KHZSP ladder is ordered in either 4m or 6m lengths.

Finish codes

PG Pre-galvanised

HDG Hot Dip Galvanised

4m cable ladder pre-galvanised

Alt code	Type	Part number	Finish	Qty
718572	200	KHZSP 200P	PG	4m
718573	300	KHZSP 300P	PG	4m
718574	400	KHZSP 400P	PG	4m
718575	500	KHZSP 500P	PG	4m
718576	600	KHZSP 600P	PG	4m

6m cable ladder pre-galvanised

Alt code	Type	Part number	Finish	Qty
781099	800	KHZPS 800P	PG	6m
725356	1000	KHZPS 1000P	PG	6m

Flat interior bend

Alt code	Type	Part number	Finish	Qty
723061	15/200	KAI 15200P	PG	1
723062	15/300	KAI 15300P	PG	1
723063	15/400	KAI 15400P	PG	1
723064	15/500	KAI 15500P	PG	1
723065	15/600	KAI 15600P	PG	1
721961	15/800	KAI 15800G	HDG	1
716073	15/1000	KAI 151000G	HDG	1

Flat exterior bend

Alt code	Type	Part number	Finish	Qty
716180	15/200	KAE 15200G	HDG	1
716182	15/300	KAE 15300G	HDG	1
716183	15/400	KAE 15400G	HDG	1
716184	15/500	KAE 15500G	HDG	1
716185	15/600	KAE 15600G	HDG	1

Riser

Alt code	Type	Part number	Finish	Qty
718177	18/200	KI 18200G	HDG	1
718179	18/300	KI 18300G	HDG	1
718180	18/400	KI 18400G	HDG	1
718181	18/500	KI 18500G	HDG	1
718182	18/600	KI 18600G	HDG	1
721964	18/800	KI 18800G	HDG	1
718183	18/1000	KI 181000G	HDG	1

T junction

Alt code	Type	Part number	Finish	Qty
716194	16/200	KT 16200G	HDG	1
716196	16/300	KT 16300G	HDG	1
716197	16/400	KT 16400G	HDG	1
716198	16/500	KT 16500G	HDG	1
716199	16/600	KT 16600G	HDG	1
721962	16/800	KT 16800G	HDG	1
716200	16/1000	KT 161000G	HDG	1



X junction				
Alt code	Type	Part number	Finish	Qty
716210	17/200	KX 17200G	HDG	1
716212	17/300	KX 17300G	HDG	1
716213	17/400	KX 17400G	HDG	1
716214	17/500	KX 17500G	HDG	1
716215	17/600	KX 17600G	HDG	1
721963	17/800	KX 17800G	HDG	1
716216	17/1000	KX 171000G	HDG	1



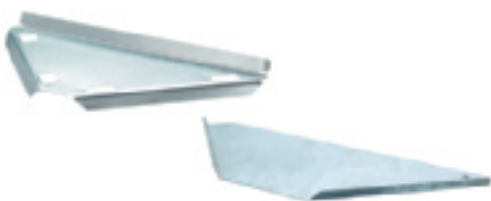
Joint 21				
Alt code	Type	Part number	Finish	Qty
791196	Joint 21	KJC21G	P	1



Universal coupling				
Alt code	Type	Part number	Finish	Qty
718409	Coupling 22	KVHC 22G	HDG	1



Accessories				
Alt code	Type	Part number	Finish	Qty
709017	Fixed Take-off Hook 4	KTOH 4A	ALU	1
709018	End Connection 10	KEC 10A	ALU	1



Corner plates				
Alt code	Type	Part number	Finish	Qty
768733	Angle Plate 33/1	KAP 331P	PG	1
707748	Angle Plate 33/2	KAP 332G	HDG	1



Junction coupling				
Alt code	Type	Part number	Finish	Qty
725096	14	KJT 14G	HDG	1



Profile protection 2m length				
Alt code	Type	Part number	Finish	Qty
732151	28P	KPP 28P	Grey plastic	1 x 2m



Profile clamp				
Alt code	Type	Part number	Finish	Qty
725363	41	KPC 41P	PG	1



Hold down clamp				
Alt code	Type	Part number	Finish	Qty
800210	42S	KPC 42SG	HDG	1



Ordering information

KHZP ladder is ordered in 6m lengths.

Finish codes

HDG Hot Dip Galvanised
SS Stainless steel

6m cable ladder

Alt code	Type	Part number	Finish	Qty
718562	150	KHZP 150G	HDG	6m
718563	200	KHZP 200G	HDG	6m
718564	300	KHZP 300G	HDG	6m
718565	400	KHZP 400G	HDG	6m
718566	500	KHZP 500G	HDG	6m
718567	600	KHZP 600G	HDG	6m
721960	800	KHZP 800G	HDG	6m
718568	1000	KHZP 1000G	HDG	6m

Accessories

Flat interior bend

Alt code	Type	Part number	Finish	Qty
716066	15/150	KAI 15150G	HDG	1
716067	15/200	KAI 15200G	HDG	1
716069	15/300	KAI 15300G	HDG	1
716070	15/400	KAI 15400G	HDG	1
716071	15/500	KAI 15500G	HDG	1
716072	15/600	KAI 15600G	HDG	1
721961	15/800	KAI 15800G	HDG	1
716073	15/1000	KAI 151000G	HDG	1

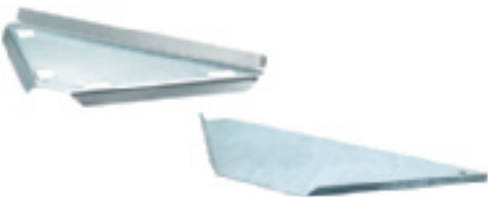
Flat exterior bend

Alt code	Type	Part number	Finish	Qty
716180	15/200	KAE 15200G	HDG	1
716182	15/300	KAE 15300G	HDG	1
716183	15/400	KAE 15400G	HDG	1
716184	15/500	KAE 15500G	HDG	1
716185	15/600	KAE 15600G	HDG	1

Riser

Alt code	Type	Part number	Finish	Qty
718176	18/150	KI 18150G	HDG	1
718177	18/200	KI 18200G	HDG	1
718179	18/300	KI 18300G	HDG	1
718180	18/400	KI 18400G	HDG	1
718181	18/500	KI 18500G	HDG	1
718182	18/600	KI 18600G	HDG	1
721964	18/800	KI 18800G	HDG	1
718183	18/1000	KI 181000G	HDG	1





T junction				
Alt code	Type	Part number	Finish	Qty
716194	16/200	KT 16200G	HDG	1
716196	16/300	KT 16300G	HDG	1
716197	16/400	KT 16400G	HDG	1
716198	16/500	KT 16500G	HDG	1
716199	16/600	KT 16600G	HDG	1
721962	16/800	KT 16800G	HDG	1
716200	16/1000	KT 161000G	HDG	1

X junction				
Alt code	Type	Part number	Finish	Qty
716210	17/200	KX 17200G	HDG	1
716212	17/300	KX 17300G	HDG	1
716213	17/400	KX 17400G	HDG	1
716214	17/500	KX 17500G	HDG	1
716215	17/600	KX 17600G	HDG	1
721963	17/800	KX 17800G	HDG	1
716216	17/1000	KX 171000G	HDG	1

Joints				
Alt code	Type	Part number	Finish	Qty
705304	Joint 9	KJC 9G	HDG	1
791199	Joint 21	KJC21G	HDG	1

Universal coupling				
Alt code	Type	Part number	Finish	Qty
718409	Coupling 22	KVHC 22G	HDG	1

Accessories				
Alt code	Type	Part number	Finish	Qty
709017	Fixed take-off hook 4	KTOH 4A	ALU	1
709018	End connection 10	KEC 10A	ALU	1

Corner plates				
Alt code	Type	Part number	Finish	Qty
768733	Angle plate 33/1	KAP 331P	PG	1
707748	Angle plate 33/2	KAP 332G	HDG	1



Junction coupling				
Alt code	Type	Part number	Finish	Qty
725096	14	KJT 14G	HDG	1



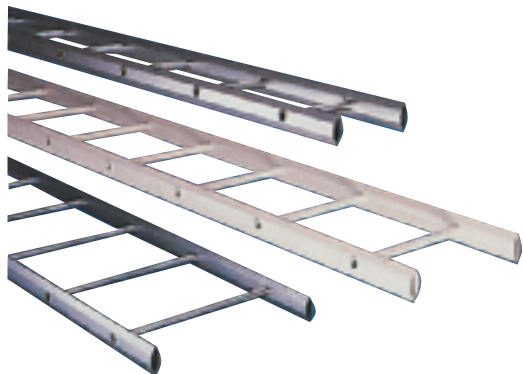
2m profile protection				
Alt code	Type	Part number	Finish	Qty
732151	28P	KPP 28P	Grey Plastic	1 x 2m



Profile clamp				
Alt code	Type	Part number	Finish	Qty
720824	41	KPC 41G	HDG	1



Hold down clamp				
Alt code	Type	Part number	Finish	Qty
800210	42S	KPC 42SG	HDG	1



Ordering information

KHZ ladder is ordered in 6m lengths.

Finish codes

HDG Hot Dip Galvanised

6m cable ladder pre-galvanised

Alt code	Type	Part number	Finish	Qty
768001	150	KHZ 150G	HDG	6m
768002	200	KHZ 200G	HDG	6m
768004	300	KHZ 300G	HDG	6m
768005	400	KHZ 400G	HDG	6m
768006	500	KHZ 500G	HDG	6m
768007	600	KHZ 600G	HDG	6m

Accessories

Flat interior bend

Alt code	Type	Part number	Qty
720923	15/150	KAI 15150RG	1
720924	15/200	KAI 15200RG	1
720925	15/300	KAI 15300RG	1
720926	15/400	KAI 15400RG	1
720927	15/500	KAI 15500RG	1
720928	15/600	KAI 15600RG	1

Riser

Alt code	Type	Part number	Qty
720935	18/150	KHZI 18150G	1
720936	18/200	KHZI 18200G	1
720937	18/300	KHZI 18300G	1
720938	18/400	KHZI 18400G	1
720939	18/500	KHZI 18500G	1
720940	18/600	KHZI 18600G	1

T junction

Alt code	Type	Part number	Qty
720929	16/150	KHZT 16150G	1
720930	16/200	KHZT 16200G	1
720931	16/300	KHZT 16300G	1
720932	16/400	KHZT 16400G	1
720933	16/500	KHZT 16500G	1
720934	16/600	KHZT 16600G	1





Intermediate connection bolts

Alt code	Type	Part number	Finish	Qty
705392	29/200	KICB 29200G	HDG	1
705394	29/300	KICB 29300G	HDG	1
705395	29/400	KICB 29400G	HDG	1
705396	29/500	KICB 29500G	HDG	1
705397	29/600	KICB 29600G	HDG	1



Joints

Alt code	Type	Part number	Finish	Qty
705304	Joint 9	KJC 9G	HDG	1
708740	Joint 21	KJC021G	HDG	1



Universal coupling

Alt code	Type	Part number	Finish	Qty
718409	Coupling 22	KVHC 22G	HDG	1



Cross member plug

Alt code	Type	Part number	Finish	Qty
726668	Plug 27	KCMP 27	Silver LDPE	1
617522	Rung Plug	KRPK 71571LDPE	Clear LDPE	1



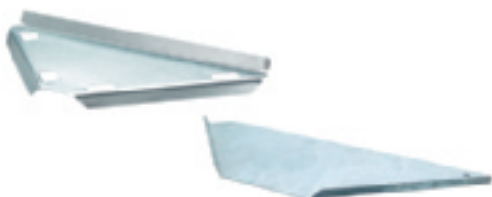
End plugs

Alt code	Type	Part number	Finish	Qty
709019	External 28	KEP 28	LDPE	1
731994	Internal 28i	KEP 281FF	LDPE	1



Accessories

Alt code	Type	Part number	Finish	Qty
709017	Fixed take-off hook 4	KTOH 4A	ALU	1
709018	End connection 10	KEC 10A	ALU	1



Corner plates

Alt code	Type	Part number	Finish	Qty
768733	33/1	KAP 331P	PG	1
707748	33/2	KAP 332G	HDG	1



Junction coupling				
Alt code	Type	Part number	Finish	Qty
725096	14	KJT 14G	HDG	1



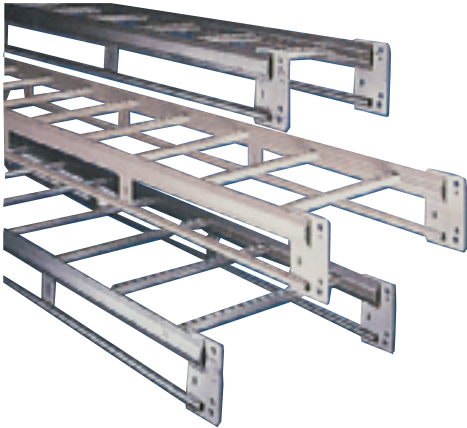
Profile protection length 2m				
Alt code	Type	Part number	Finish	Qty
732151	28P	KPP 28P	Grey Plastic	1 x 2m



Profile clamps				
Alt code	Type	Part number	Finish	Qty
720824	41	KPC 41G	HDG	1



Hold down clamp				
Alt code	Type	Part number	Finish	Qty
800210	42S	KPC 42SG	HDG	1



Ordering information

KHZPV Ladder is ordered and priced in 6m lengths

Finish codes

HDG Hot Dip Galvanised

6m cable ladder pre-galvanised

Alt code	Type	Part number	Finish	Qty
717982	200	KHZPV 200G	HDG	6m
717983	300	KHZPV 300G	HDG	6m
717984	400	KHZPV 400G	HDG	6m
717985	500	KHZPV 500G	HDG	6m
717986	600	KHZPV 600G	HDG	6m
716400	1000	KHZPV 1000G	HDG	6m

Accessories



Flat interior bend

Alt code	Type	Part number	Finish	Qty
716241	55/200	KHZVA 55200G	HDG	1
716243	55/300	KHZVA 55300G	HDG	1
716244	55/400	KHZVA 55400G	HDG	1
716245	55/500	KHZVA 55500G	HDG	1
716246	55/600	KHZVA 55600G	HDG	1
716247	55/1000	KHZVA 551000G	HDG	1



T junction

Alt code	Type	Part number	Finish	Qty
716255	56/200	KHZVT 56200G	HDG	1
716257	56/300	KHZVT 56300G	HDG	1
716258	56/400	KHZVT 56400G	HDG	1
716259	56/500	KHZVT 56500G	HDG	1
716260	56/600	KHZVT 56600G	HDG	1
721261	56/1000	KHZVT 561000G	HDG	1



Riser coupling

Alt code	Type	Part number	Finish	Qty
716389	49/200	KRC 49200G	HDG	1
716390	49/300	KRC 49300G	HDG	1
716391	49/400	KRC 49400G	HDG	1
720517	49/500	KRC 49500G	HDG	1
716392	49/600	KRC 49600G	HDG	1
716393	49/1000	KRC 491000G	HDG	1



Screw set (set of 4)				
Alt code	Type	Part number	Finish	Qty
706415	M12	KSSM 12G	HDG	1

Cut end – joint				
Alt code	Type	Part number	Finish	Qty
707609	45	KJ 45G	HDG	1

(includes fixing and joining screw set)



Coupling				
Alt code	Type	Part number	Finish	Qty
720815	44	KCC 44G	HDG	1
731837	51	KJC 51G	HDG	1
718901	48/30 Coupling Plate	KCP 4830G	HDG	1
718902	48/60 Coupling Plate	KCP 4860G	HDG	1
718411	48/45 Coupling Plate	KCP 4845G	HDG	1

(excludes joint screws)

8



Profile support piece				
Alt code	Type	Part number	Finish	Qty
708001	46	KPSP 46G	HDG	1



Profile clamp				
Alt code	Type	Part number	Finish	Qty
707511	43	KPC 43G	HDG	1



Take off hook				
Alt code	Type	Part number	Finish	Qty
714353	47	KTH 47G	HDG	1



Lighting bracket				
Alt code	Type	Part number	Finish	Qty
718643	Heavy duty 200mm	KLBHD 200	HDG	1



Covers for trunking body - length 2m				
Alt code	Type	Part number	Finish	Qty
732216	W5-150	KCW 5150P	PG	1
732217	W5-200	KCW 5200P	PG	1
732218	W5-300	KCW 5300P	PG	1
732219	W5-400	KCW 5400P	PG	1
732220	W5-500	KCW 5500P	PG	1
732221	W5-600	KCW 5600P	PG	1
732222	W5-1000	KCW 51000P	PG	1



Covers for flat interior bend				
Alt code	Type	Part number	Finish	Qty
732322	150	KCA 15150	PG	1
732323	200	KCA 15200	PG	1
732324	300	KCA 15300	PG	1
732325	400	KCA 15400	PG	1
732326	500	KCA 15500	PG	1
732327	600	KCA 15600	PG	1
732328	1000	KCA 151000	PG	1



Covers for T junction				
Alt code	Type	Part number	Finish	Qty
732345	150mm	KTC 16150	PG	1
732346	200mm	KTC 16200	PG	1
732347	300mm	KTC 16300	PG	1
732348	400mm	KTC 16400	PG	1
732349	500mm	KTC 16500	PG	1
732350	600mm	KTC 16600	PG	1
732351	1000mm	KTC 161000	PG	1



Profile support piece

Alt code	Type	Part number	Finish	Qty
729217	37	KPSP 37P	PG	1

(Use with screw set W38)



Cover joints

Alt code	Type	Part number	Finish	Qty
712639	150	KCJ 150P	PG	1
712640	200	KCJ 200P	PG	1
712642	300	KCJ 300P	PG	1
712643	400	KCJ 400P	PG	1
712644	500	KCJ 500P	PG	1
712645	600	KCJ 600P	PG	1

(for 1000 use 2 x 500)



Tele-conduit 36* with knockout holes - length 2m

Alt code	Type	Part number	Finish	Qty
725065	36/50	KTC 3650P	PG	1
725066	36/100	KTC 36100P	PG	1
725067	36/200	KTC 36200P	PG	1



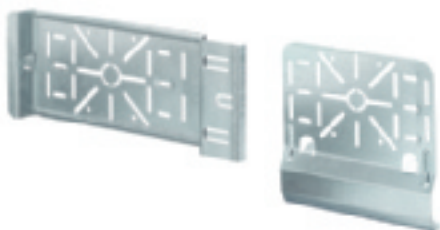
Dividing strip 39* - length 1.75m

Alt code	Type	Part number	Finish	Qty
718835	39/24	KD 3924P	PG	1
725785	39/55	KD 3955P	PG	1



Joint W39*

Alt code	Type	Part number	Finish	Qty
716824	Joint W39	KJW 39	PG	1



Junction box plate

Alt code	Type	Part number	Finish	Qty
718618	35P	KJBP 35P	PG	1
711205	355	KJBP 355P	PG	1



Earth clamp W79				
Alt code	Type	Part number	Finish	Qty
716640	W79	KECW 49E	EG	1



Clamp 12				
Alt code	Type	Part number	Finish	Qty
728653	12/70	KC 1270G	HDG	1
728654	12/120	KC 12120G	HDG	1



Cable clamps for KHZP and KHZPV ladders

Cable clamp type A1 for 1 cable				
Alt code	Type	Part number	Finish	Qty
718507	A1-12	KCCA 112P	PG	1
718508	A1-16	KCCA 116P	PG	1
718509	A1-22	KCCA 122P	PG	1
718510	A1-28	KCCA 128P	PG	1
718511	A1-36	KCCA 136P	PG	1
718512	A1-44	KCCA 144P	PG	1
718513	A1-52	KCCA 152P	PG	1
718514	A1-60	KCCA 160P	PG	1

Cable clamp type A2 for 2 cables				
Alt code	Type	Part number	Finish	Qty
718516	A2-12	KCCA 212P	PG	1
718517	A2-16	KCCA 216P	PG	1
718518	A2-22	KCCA 222P	PG	1
718519	A2-28	KCCA 228P	PG	1
718520	A2-36	KCCA 236P	PG	1
718521	A2-44	KCCA 244P	PG	1



Cable clamps for KHZ ladder

Cable clamp type R1 for 1 cable

Alt code	Type	Part number	Finish	Qty
769000	R1-12	KCCR 112P	PG	1
769001	R1-16	KCCR 116P	PG	1
769002	R1-22	KCCR 122P	PG	1
769003	R1-28	KCCR 128P	PG	1
769004	R1-36	KCCR 136P	PG	1
769005	R1-44	KCCR 144P	PG	1
769006	R1-52	KCCR 152P	PG	1
769007	R1-60	KCCR 160P	PG	1
769008	R1-70	KCCR 170P	PG	1

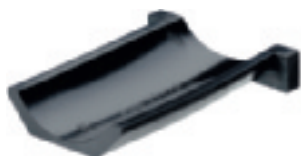
Cable clamp type R2 for 2 cable

Alt code	Type	Part number	Finish	Qty
769009	R2-12	KCCR 212P	PG	1
769010	R2-16	KCCR 216P	PG	1
769011	R2-22	KCCR 222P	PG	1
769012	R2-28	KCCR 228P	PG	1
769013	R2-36	KCCR 236P	PG	1
769014	R2-44	KCCR 244P	PG	1
769015	R2-52	KCCR 252P	PG	1
769016	R2-60	KCCR 260P	PG	1

Inserts for all clamps

Insert piece

Alt code	Type	Part number	Finish	Qty
709050	EM-12	KIEM 12	PVC	1
709051	EM-16	KIEM 16	PVC	1
709052	EM-22	KIEM 22	PVC	1
709053	EM-28	KIEM 28	PVC	1
709054	EM-36	KIEM 36	PVC	1
709055	EM-44	KIEM 44	PVC	1
709056	EM-52	KIEM 52	PVC	1
709057	EM-60	KIEM 60	PVC	1
709058	EM-70	KIEM 70	PVC	1



Cable roller

Alt code	Type	Part number	Finish	Qty
718660	Type S	KCRSG	HDG	1

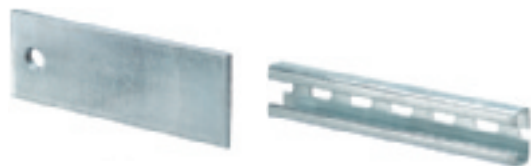




Cantilever arm 50				
Alt code	Type	Part number	Finish	Qty
723432	50/100	KCA50 100G	HDG	1
723433	50/150	KCA50 150G	HDG	1
723434	50/200	KCA50 200G	HDG	1
723435	50/250	KCA50 250G	HDG	1
723436	50/300	KCA50 300G	HDG	1
723437	50/400	KCA50 400G	HDG	1
723438	50/500	KCA50 500G	HDG	1
723439	50/600	KCA50 600G	HDG	1
727128	50/1000*	KCA50 1000G	HDG	1

Cantilever arm 50F				
Alt code	Type	Part number	Finish	Qty
718624	50F/200	KCA50F 200G	HDG	1
718625	50F/300	KCA50F 300G	HDG	1
718626	50F/400	KCA50F 400G	HDG	1
718627	50F/500	KCA50F 500G	HDG	1
718628	50F/600	KCA50F 600G	HDG	1
712465	50F/1000*	KCA50F 1000G	HDG	1

Cantilever arm 50L				
Alt code	Type	Part number	Finish	Qty
725107	50L/200	KCA50L 200G	HDG	1
725109	50L/300	KCA50L 300G	HDG	1



Accessories for arms				
Alt code	Type	Part number	Finish	Qty
768738	Back plate 40	KBP 40G	HDG	1
717001	Mounting rail	KMR 40G	HDG	1



Profile clamps				
Alt code	Type	Part number	Finish	Qty
705611	42	KPC 42G	HDG	1
800210	42S	KPC 42SG	HDG	1
707511	43	KPC 43G	HDG	1



Vertical piece 2				
Alt code	Type	Part number	Finish	Qty
717191	2/300	KVP 2300G	HDG	1
717192	2/400	KVP 2400G	HDG	1
717193	2/500	KVP 2500G	HDG	1
717194	2/700	KVP 2700G	HDG	1
717195	2/1000	KVP 21000G	HDG	1

Vertical piece 2F				
Alt code	Type	Part number	Finish	Qty
717196	2F/280	KVP2F 280G	HDG	1
717197	2F/370	KVP2F 370G	HDG	1
717198	2F/505	KVP2F 505G	HDG	1
717199	2F/730	KVP2F 730G	HDG	1
717200	2F/1000	KVP2F 1000G	HDG	1

Vertical piece 20				
Alt code	Type	Part number	Finish	Qty
715723	20/505	KVP20 505G	HDG	1
715724	20/730	KVP20 730G	HDG	1
715725	20/1000	KVP20 1000G	HDG	1
715726	20/1500	KVP20 1500G	HDG	1
715727	20/2000	KVP20 2000G	HDG	1
715728	20/3000	KVP20 3000G	HDG	1

Vertical piece 20F & 20S				
Alt code	Type	Part number	Finish	Qty
718249	20F/1000	KVP20F 1000G	HDG	1
718250	20F/1500	KVP20F 1500G	HDG	1
718251	20F/2000	KVP20F 2000G	HDG	1
709799	20F/3000	KVP20F 3000G	HDG	1
718721	20FS/3000	KVP20FS 3000G	HDG	1

Ceiling plate				
Alt code	Type	Part number	Finish	Qty
718849	20F	KCP20FG	HDG	1



Pendant bar 1				
Alt code	Type	Part number	Finish	Qty
717640	1/300	KPB 1300G	HDG	1
717641	1/500	KPB 1500G	HDG	1
717642	1/800	KPB 1800G	HDG	1
718903	1/1500	KPB 11500G	HDG	1



End plugs				
Alt code	Type	Part number	Finish	Qty
709021	28E	KEP 28E	LDPE	1
709020	28D	KEP 28D	LDPE	1



3m pendant/fixing rails				
Alt code	Type	Part number	Finish	Qty
715879	24/34	KPF 2434G	HDG	1

2.97m pendant/fixing rails				
Alt code	Type	Part number	Finish	Qty
705092	24/40	KPF 2440G	HDG	1
705093	24/48	KPF 2448G	HDG	1
709795	24/20	KPF 2420G	HDG	1
709798	24/20F	KKPF 2420F	HDG	1

5.94m pendant/fixing rails				
Alt code	Type	Part number	Finish	Qty
718808	24/20F	KPF 2420FL5940G	HDG	1
709031	24/20FS	KPF 2420FSL5940G	HDG	1

4m pendant/fixing rails				
Alt code	Type	Part number	Finish	Qty
768063	24/26x53	KPR 2426X53G	HDG	1



Pendant joints				
Alt code	Type	Part number	Finish	Qty
713177	2J	KP J2JG	HDG	1
713178	2FJ	KP J2JFG	HDG	1
713173	20J	KP J20JG	HDG	1



Ceiling bracket 5				
Alt code	Type	Part number	Finish	Qty
718640	5	KCB 5G	HDG	1



Pendant base plate				
Alt code	Type	Part number	Finish	Qty
718253	5	KPBP 520G	HDG	1

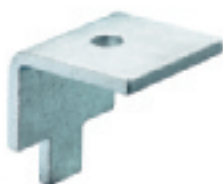


Support bracket 3				
Alt code	Type	Part number	Finish	Qty
720761	3/150	KSB 3150G	HDG	1
720762	3/200	KSB 3200G	HDG	1
720763	3/300	KSB 3300G	HDG	1
720764	3/400	KSB 3400G	HDG	1
720765	3/500	KSB 3500G	HDG	1
720766	3/600	KSB 3600G	HDG	1

Each bracket requires 2 x clamp 42



Wall brackets 11/25 & 11/75				
Alt code	Type	Part number	Finish	Qty
713204	11/25	KWB 1125G	HDG	1
713203	11/75	KWB 1175G	HDG	1



Beam clamp				
Alt code	Type	Part number	Finish	Qty
715675	5BK-10	KBC5BK 10G	HDG	1
718243	5BK-30	KBC5BK 30G	HDG	1
713153	5TP	KBC5TPG	HDG	1



Bracket 60/40				
Alt code	Type	Part number	Finish	Qty
718904	60/40	KB 6040G	HDG	1



Wall bracket				
Alt code	Type	Part number	Finish	Qty
723450	20	KWB 20	HDG	1



Angle bracket 5L				
Alt code	Type	Part number	Finish	Qty
731791	5L	KAB 5LG	HDG	1



Angle bracket 5LS				
Alt code	Type	Part number	Finish	Qty
709801	5L	KAB 5LSG	HDG	1

8



End bracket HT-11				
Alt code	Type	Part number	Finish	Qty
717618	HT-11	KEB HT11G	HDG	1



Round bar fixing for floors				
Alt code	Type	Part number	Finish	Qty
718312		KRBF	HDG	1



Clamp set M6

Alt code	Type	Part number	Finish	Qty
720786	M6-25	KCM 625SS	HDG	1



Screw sets

Alt code	Type	Part number	Finish	Qty
715735	2S	KSS 2SG	HDG	1
715736	20S	KSS 20SG	HDG	1
713694	22S	KSS 22SG	HDG	1
706415	M12	KSS M12G	HDG	1
716407	24S	KSS 24SG	HDG	1
718632	Back nut M8	KBN 8G	HDG	1
718473	W34	KSSW 34E	EG	1
715646	W36	KSSW 36E	EG	1
716907	W38	KSSW 38G	HDG	1



T-bolts

Alt code	Type	Part number	Finish	Qty
716794	26/F30	KTB 26F30G	HDG	1
716795	26/F40	KTB 26F40G	HDG	1
716796	26/F50	KTB 26F50G	HDG	1
714009	26	KTB 26G	HDG	1