



Datasheet

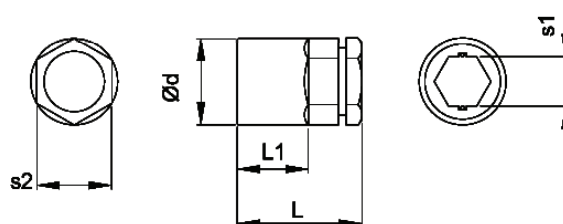
RS Pro 1/4" Bit Adaptor for Wrenches


EN



Product features:

- Converts a 10mm Ratcheting Combination wrench into a 1/4" bit ratchet
- For use with ratchet spanners
- Adaptor for 1/4" bits with a retaining ring
- High performance Alloy Steel
- Mirror Chrome Finish



RS CODE NO	s1 inch	s2 mm	L mm	Ød mm	
1923718	1/4"	10	20.6	10.9	7