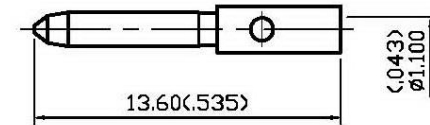
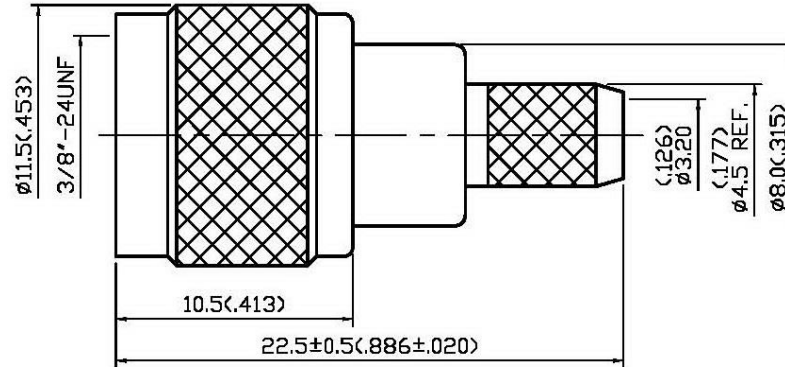
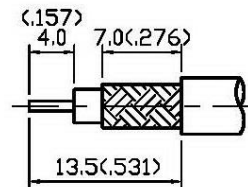


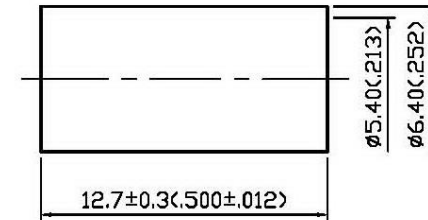
NO	DESCRIPTION	DATE
⚠	WORKING VOLTAGE → VOLTAGE RATING DEL. PROOF VOLTAGE	11.28.13'



11/29/2013



STRIPPING DIMENSION
SCALE 2:1



1.0 ELECTRICAL

- 1.1 FREQUENCY RANGE: DC-2.5 GHz
- 1.2 NOMINAL IMPEDANCE: 50 OHM
- 1.3 VOLTAGE RATING: 335 VOLTS MAX. ⚠
- 1.4 VSWR: 1.5 MAX.

2.0 MATERIALS

- 2.1 BODIES: BRASS PER JIS-C3604
- 2.2 CENTER CONTACT: BRASS PER JIS-C3604
- 2.3 CRIMP FERRULE: BRASS PER JIS-C2700

3.0 FINISHES AND OTHERS

- 3.1 SEE BELOW TABLE FOR DETAILS.

4.0 MECHANICAL

- 4.1 FOR USE WITH RG58U OR SIMILAR STYLE CABLE
- 4.2 CABLE ATTACHMENT: OUTER: CRIMP, INNER: SOLDER/CRIMP
- 4.3 CRIMP SIZE REQUIRED: CONTACT: 1.8(071) HEX. CRIMP TOOL
FERRULE: 5.5(216) HEX. CRIMP TOOL

5.0 ENVIRONMENTAL

- 5.1 OPERATING TEMPERATURE RANGE: -40° C TO +60° C

NO	DESCRIPTION	MATERIAL	Q'TY	FINISH
6	CRIMP FERRULE	BRASS	1	NICKEL
5	SHELL	BRASS	1	NICKEL 100μ" MIN.
4	WASHER	BRASS	1	NONE
3	INSULATION	POM	1	NONE
2	CENTER CONTACT	BRASS	1	GOLD
1	BODY	BRASS	1	NICKEL 100μ" MIN.



APPROVED by _____ DATE: _____

DESCRIPTION		MINI-UHF STRAIGHT PLUG CRIMP									
製圖	DRAWN	TOLERANCE	品名	12-03-1	D.G.N	58U	日期	DATE	版次	REV.	TITLE
	Yoko										
檢圖	CHECK	.XX ±0.1	單位	UNIT	DWG.NO.	12-0020	SCALE	比例	4:1		
	Arc									mm(in)	
認定	APPROVAL	.XXX ±0.05	ANGLE	±5°							
	Angela										