

För icke direkt toleranssatta mått gäller toleransklass
General tolerances if not otherwise stated



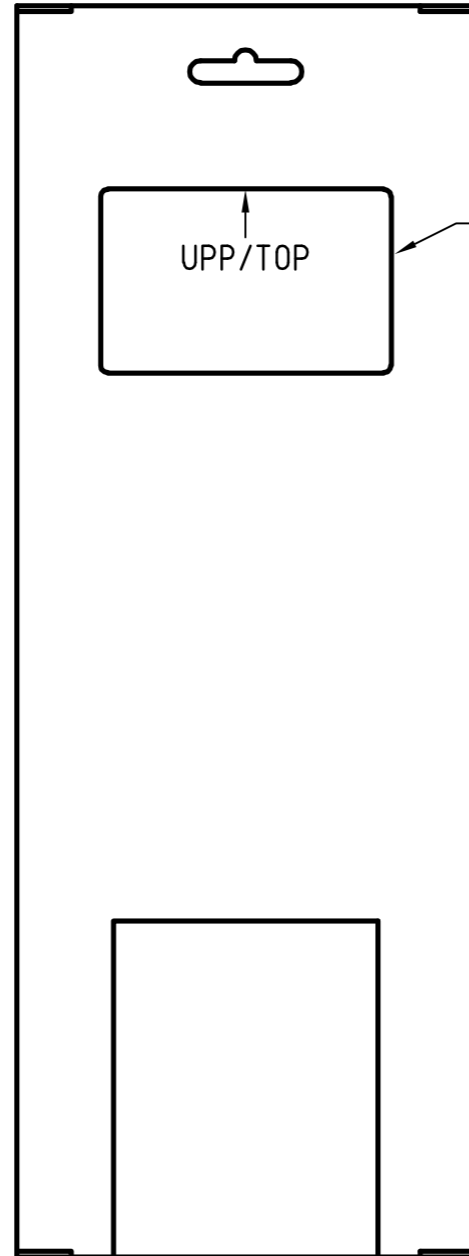
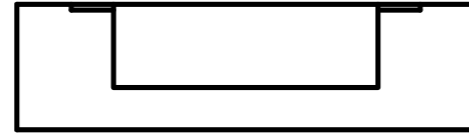
NOM DIM MM		TOL CLASS		
From	To	A	B	C
(1)	6	±0.05	±0.1	±0.2
(6)	30	±0.1	±0.2	±0.5
(30)	100	±0.15	±0.3	±0.8
(100)	300	±0.2	±0.5	±1.2
(300)	1000	±0.3	±0.8	±2

Hål / Holes H13

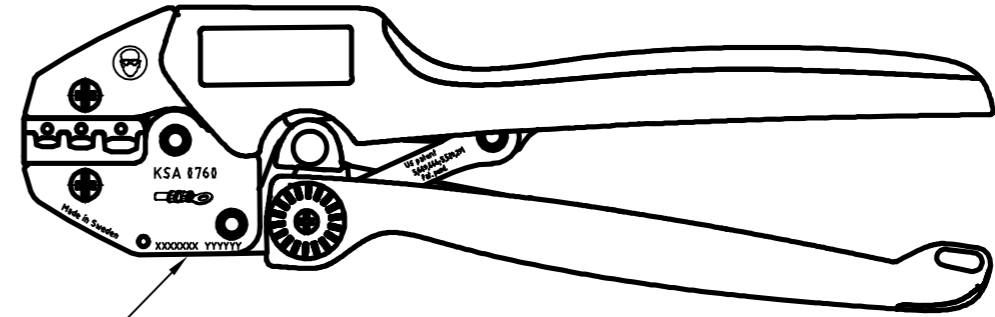
Skarpa kanter brutna där ej annat anges.
No sharp edges unless otherwise specified.

Övriga generella toleranser enligt ritning 4100-4644.
Additional general tolerances in accordance with drawing 4100-4644.

Denna ritning är Pressmaster AB:s egendom. Skyddad av gällande lag.
This drawing is the property of Pressmaster AB. Protected in accordance with prevailing law.



4100-6616



4300-3702

FÖRSPÄNNING / PRELOAD: 140 ± 30 N

Tolkmått / Gauge dimensions (mm)

URTAG NEST	Gåtolk GO	Stopptolk NO GO
RÖD / RED	Ø2.20	Ø2.40
BLÅ / BLUE	Ø2.65	Ø2.85
GUL / YELLOW	Ø3.35	Ø3.55

Rev	Change order	Change: A = Added W = Was D = Deleted	Date	Sign
11	P2751	Ändrad enligt kund/ Changed according the customer	091103	SE

Material		Behandling/Treatment			Status Frisläppt	
Konstr/Design PMN	Ritad/Drawn TGW	Datum/Date 2009-11-03	Skala/Scale 1:2	Kontr/Checked IP	Godk/Approved NE	Änne/Blank
pressmaster ®				Benämning/Denomination Krimptång 139-704		Vikt/Weight, gram 668 g
ISO 9001 REG NR FM19447				CRIMPING TOOL		Art grp 012
					Ritn nr/Drawing no 43001543	REV 011