

FEATURES

- Designed for enhanced filtering
- Two-stage filter
- Excellent differential and common-mode attenuation

RS PRO Power Line Filters

RS Stock No.: 2378709, 2378710



RS Professionally Approved Products bring to you professional quality parts across all product categories. Our product range has been tested by engineers and provides a comparable quality to the leading brands without paying a premium price.

Product Description

- Electrical and electronic equipment
- Medical equipment
- Datacom equipment
- Office automation equipment

Mechanical Specifications

size	94X55X44.5mm (L X W X H)
weight	0.410kgs

Electrical Specifications

Rated Voltage Max.	250VAC,50/60Hz
Operating frequency	DC to 400Hz
Rated currents	30A@40°C
Hipot Rating	L-N 1450VDC L/N-G 2000VAC/2250VDC

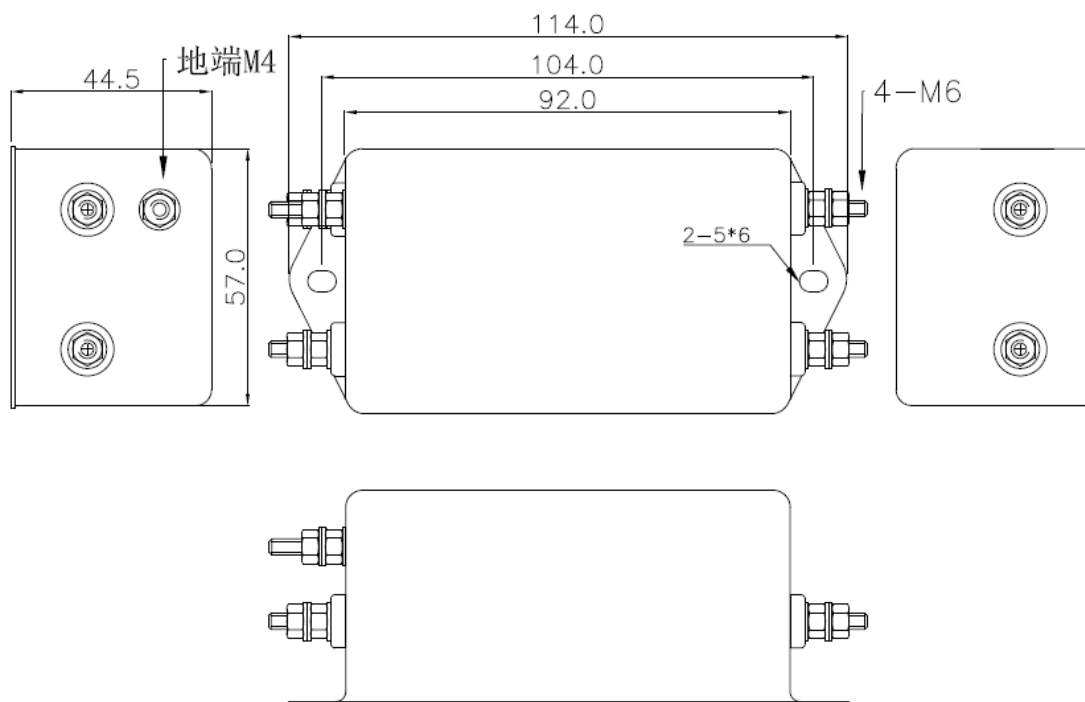
Protection Category

according to IEC 60529 IP40

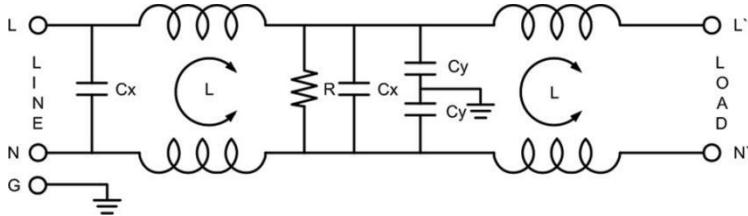
Approvals

Declarations	CUL;TUV;CQC;CE
Standards Met	UL1283, CSA C22.2 No.8; IEC/EN 60939,; CQC GB 15288/GB 15287-2008

Physical Dimensions:



Electrical Schematic:



Insertion loss table(In 50ohm system according IEC/CISPR No.17)

— Common mode - - - - - Differential mode
 30A

