

Datasheet

TOOLS

WRAP / STRIP / UNWRAP

WSU-2224
(Regular Wrap)

WSU-24M
(Modified Wrap)

WSU-26M
(Modified Wrap)

WSU-30
(Regular Wrap)

WSU-30M
(Modified Wrap)



Wrap / Strip / Unwrap Tools

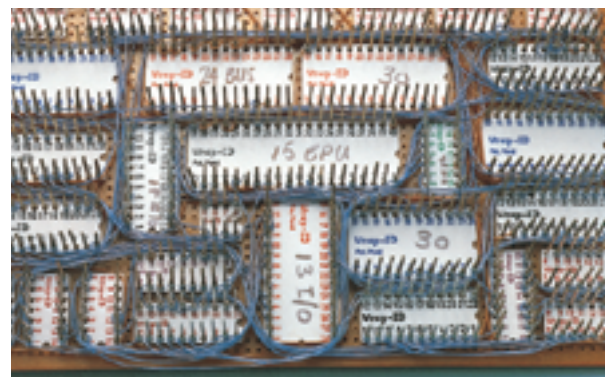
Each WSU tool wraps, unwraps and even strips the appropriate wire diameter with a unique built-in stripper blade. Ideal for bench use or tool kit in all service and repair applications. In addition to versatility, convenience, and reliability, the WSU Series offers exceptional value.

Part No.	Wire Size		Terminal Hole Diameter		Terminal Hole Depth		Outside Diameter		Square Post	
	AWG	mm	In.	mm	In.	mm	In.	mm	In.	mm
WSU-2224	22-24	0.65-0.50	.075	1.90	1.50	38.1	.213	5.4	.045	1.14
WSU-24M	24	0.50	.075	1.90	1.50	38.1	.213	5.4	.045	1.14
WSU-26M	26	0.40	.075	1.90	1.50	38.1	.213	5.4	.045	0.63
WSU-30	30	0.25	.036	0.91	1.50	38.1	.125	3.2	.025	0.63
WSU-30M	30	0.25	.036	0.91	1.50	38.1	.125	3.2	.025	0.63

SOCKET-WRAP I.D.™

Increase Wiring Speed and Reduce Errors.

Used to identify pin numbers on wire wrapping sockets. Consisting of a socket-sized plastic panel with numbered holes in the pin location, the Socket Wrap-ID is simply slipped onto the socket before wrapping. You can also write on them for easy identification of location, IC Part number, function, etc. These unique items greatly simplify both initial wire wrapping and subsequent troubleshooting or repair. A great help to technicians, and production facilities alike.



Part No.	Pins	Row Spacing	Qty./Pkg.
ID-8-100	8	.3" (7.5mm)	100
ID-14-100	14	.3" (7.5mm)	100
ID-16-100	16	.3" (7.5mm)	100
ID-18-50	18	.3" (7.5mm)	50
ID-20-50	20	.3" (7.5mm)	50
ID-22-50	22	.4" (10mm)	50
ID-24-50	24	.6" (15mm)	50
ID-28-50	28	.6" (15mm)	50
ID-40-25	40	.6" (15mm)	25
ID-96-25	96	.3" (7.5mm)	25