

Your Schneider Electric Harmony control and signaling guide



Want to learn how to control and monitor a timer relay with your smart phone?



Life Is On

Schneider
Electric

Harmony XB4 Ø 22 metal pushbuttons



1



2



3

1 Flush mounting pushbuttons, unmarked

Colour	○ White	● Black	● Green	● Red	● Yellow	● Blue
Contact	NO		NC		NO	
Connection	Screw clamp terminals					
Complete product	123-8138	330-8616	330-8638	330-8644	330-8650	330-8666
Body	331-0158			331-0164	331-0158	
Head	330-8953	330-8969	330-8975	330-8981	330-8997	330-9007

2 Booted flush mounting pushbuttons, unmarked

Complete product	–	330-8773	330-8795	330-8802	330-8818	330-8824
Body	331-0158			331-0164	331-0158	
Head	123-8174	609-2516	609-2522	609-2538	609-2544	609-2550

3 Flush mounting pushbuttons, marked

Colour	○ White	● Black	● Green	● Red		
Marking	↑	↓	“I” (white)	NC (white)		
Contact	NO		NO + NC			
Connection	Screw clamp terminals					
Complete product	609-5307	609-5313	609-5290	–		
Body	331-0158			331-0192		
Head	609-2140	609-2156	656-7199	656-7212		



4



5

4 Ø 40 trigger action Emergency stop mushroom head pushbuttons

Colour	● Red			
Contact	NO + NC Push-pull	2 NC Turn to release	NO + NC Turn to release	NO + NC Key release
Connection	Screw clamp terminals			
Complete product	609-5600	122-2311	425-8449	426-2791
Body	331-0192	342-2784	331-0192	
Head	609-2673	330-9388		330-9394

5 Ø 40 mushroom head pushbutton, spring return

Colour	● Black	● Green	● Blue	● Yellow
Contact	NO Push-pull			
Connection	Screw clamp terminals			
Complete product	609-5329	–	–	–
Body	331-0158			
Head	330-9013	330-9029	815-4017	342-2627



6



7

6 Pilot lights with integral LED

Colour	○ White	● Green	● Red	● Orange	● Blue	
Connection	Screw clamp terminals					
Complete product	24 VAC/VDC	609-5672	330-8919	330-8925	609-5701	609-5717
	110...120 VAC	609-5745	609-5751	609-5773	609-5795	609-5802
	230...240 VAC	60-95818	330-8931	330-8947	609-5846	609-5852

7 Flush mounting illuminated pushbuttons with integral LED

Colour	○ White	● Green	● Red	● Orange	● Blue	
Contact	NO + NC					
Connection	Screw clamp terminals					
Complete product	24 VAC/VDC	609-5874	372-9108	372-9114	372-9120	372-9136
	110...120 VAC	60-95880	609-5903	609-5925	609-5953	609-5975
	230...240 VAC	609-5896	609-5919	609-5931	609-5969	123-8147

Harmony XB4 Ø 22 metal pushbuttons



1 Selector switches and key switches						
Positions (number and type)	2 ∨ Stay put	2 ∇ Spring return	2 ∨ Stay put	3 ∨ Stay put	3 ∇ Spring return	
Contact	NO		NO + NC	2 NO		
Connection	Screw clamp terminals					
Complete product	Black handle	330-8672	123-8139	330-8688	330-8694	330-8701
	Long black handle	609-5391	–	–	609-5414	609-5436
	Key switch (No. 455)	330-8723	330-8751	–	330-8739	–
2 Illuminated selector switches with integral LED and coloured handle						
Stay put positions	2 ∨			3 ∨		
Colour	● Green	● Red	● Orange	● Green	● Red	● Orange
Contact	NO + NC					
Connection	Screw clamp terminals					
Complete product	24 VAC/VDC	609-5458	609-5486	609-5509	123-8140	123-8142
	230...240 VAC	609-5470	609-5492	609-5515	123-8141	123-8143
123-8144	123-8145					
3 Double and triple-headed pushbuttons						
Type	1 flush 1 projecting	2 flush	1 flush 1 projecting	2 flush	2 flush + 1 red central projecting	
Contact	NO + NC		NO + NC with 24 V pilot light		2 NO + NC	
Connection	Screw clamp terminals					
Complete product	123-8146	–	708-7701	–	724-9586	–
Body	331-0192		331-0192 + 610-2815		331-0186 + 331-0489	
Head	922-4909	817-4727	708-7708	123-8175	817-4736	817-4714

Accessories for Harmony pushbuttons



4 Contact blocks (for XB4 and XB5 pushbuttons)						
Type	Electrical blocks				Body fixing collar for XB4 only	
Contact	NO	NC	NO	NC	–	
Connection	Screw clamp terminals		Spring clamp terminals		–	
Sold in lots of	5	5	4	4	10	
Reference	331-0473	331-0489	553-973	553-844	331-0142	
5 Light blocks with integral LED (for XB4 and XB5 pushbuttons)						
Colour	○ White	● Green	● Red	● Orange	● Blue	
Connection	Screw clamp terminals					
Reference	24 VAC/VDC	610-2815	610-2821	610-2837	610-2843	610-2859
	110...120 VAC	610-2893	610-2900	610-2916	610-2922	815-1901
	230...240 VAC	610-2938	610-2944	610-2950	610-2966	610-2972
Legend holders 30 x 40 mm for 8 X 27 mm legends				Ø 60 legends for Emergency stop		
White marking/Red or black background				Black marking/Yellow background		
O	123-8178	I	817-2743	AUTO	199-181	Arrêt d'urgence 882-7881
OFF	815-1917	ON	342-3002	START	342-2942	Emergency stop 882-7897
						Not-Halt 882-7888
						Parada de emergencia 882-7890
Without marking/Red or black background				Without marking/Yellow background		
Red	334-9601	Black	334-9601			882-7884
7 Transparent boots for pushbuttons (sold in lots of 10)						
For pushbuttons	Circular projecting	Circular flush	Circular flush or projecting	Rectangular double head	Rectangular triple head	Rectangular triple head
Reference	342-2920	610-0184	609-3216	815-3969	746-9642	708-7717
8 Flush mounting kits						
For use with	Pushbuttons and pilot lights			Selector switches and illuminated pushbuttons		
Type of range and aspect	XB4 chromium plated		XB5 plastic, black	XB4 chromium plated		XB5 plastic, black
Reference	922-4971		917-6682	922-4980		917-6686

Harmony XB5 Ø 22 plastic pushbuttons



1



2



3

1 Flush mounting pushbuttons, unmarked

Colour	○ White	● Black	● Green	● Red	● Yellow	● Blue
Contact	NO		NC		NO	
Connection	Screw clamp terminals					
Complete product	123-8148	609-5997	609-6007	609-6013	815-1834	815-4124
Body	331-0445			331-0467	331-0445	
Head	422-8303	331-0209	331-0215	331-0221	331-0243	609-2875

2 Booted flush mounting pushbuttons, unmarked

Complete product	–	815-4149	815-1838	123-8166	–	–
Body	–	331-0445		331-0467	331-0445	
Head	–	342-2807	342-2829	342-2835	746-8633	746-8649

3 Flush mounting pushbuttons, marked

Colour	○ White	● Black	● Green	● Red	● Green	● Red
Marking	↑	↓	“I” (white)	NC (white)	“START” (white)	“STOP” (white)
Contact	NO			NC	NO	NC
Connection	Screw clamp terminals					
Complete product	123-8149	123-8150	180-519	815-4120	–	–
Body	331-0445			331-0467	331-0445	331-0467
Head	609-2853	609-2869	609-2847	656-7234	123-8176	746-9156



4



5

4 Ø 40 trigger action Emergency stop mushroom head pushbuttons

Colour	● Red					
Contact	NO + NC Push-pull	2 NC Turn to release	NO + NC Turn to release	NO + NC Key release		
Connection	Screw clamp terminals					
Complete product	609-6186	123-8167	609-6164	609-6170		
Body	609-3165	609-3159	609-3165			
Head	609-3092	426-2808		426-2814		

5 Ø 40 mushroom head pushbuttons, spring return

Colour	● Black	● Green	● Blue	● Yellow		
Contact	NO Push-pull					
Connection	Screw clamp terminals					
Complete product	609-6029	–	–	–		
Body	331-0445					
Head	609-2881	746-9150	746-8816	746-8813		



6



6



7

6 Pilot lights with integral LED

Colour	○ White	● Green	● Red	● Orange	● Blue	● Yellow	
Connection	Screw clamp terminals						
Complete product	24 VAC/VDC	609-6237	609-6243	609-6259	609-6265	746-9437	–
	110...120 VAC	746-9431	609-6271	609-6287	746-9440	746-9443	–
	230...240 VAC	609-6293	609-6300	609-6316	609-6322	746-9447	–
	24 VAC/VDC	875-2908	875-2917	875-2910	875-2914	875-2923	875-2926
	110...120 VAC	875-2920	875-2939	875-2932	875-2936	875-2945	875-2948
	230...240 VAC	875-2942	875-2951	875-2954	875-2958	875-2967	875-2960

7 Flush mounting illuminated pushbuttons with integral LED

Colour	○ White	● Green	● Red	● Orange	● Blue	
Contact	NO + NC					
Connection	Screw clamp terminals					
Complete product	24 VAC/VDC	609-6338	609-6344	609-6366	178-689	178-667
	230...240 VAC	123-8168	609-6350	123-8169	123-8170	123-8171

Harmony XB5 Ø 22 plastic pushbuttons



1 Selector switches and key switches

Positions		2 ∨	2 ∇	2 ∨	3 ∨	3 ∇
		Stay put	Spring return	Stay put	Stay put	Spring return
Contact		NO		NO + NC	2 NO	
Connection		Screw clamp terminals				
Complete product	Black handle	609-6035	123-8152	123-8151	609-6041	609-6057
	Long black handle	123-8154	–	–	815-4133	815-4136
	Key switch (No. 455)	609-6079	609-6091	–	123-8153	–

2 Illuminated selector switches with integral LED and coloured handle

Stay put positions		2 ∨			3 ∨		
Colour		● Green	● Red	● Orange	● Green	● Red	● Orange
Contact		NO + NC					
Connection		Screw clamp terminals					
Complete product	24 VAC/VDC	609-6108	123-8155	123-8157	123-8159	123-8161	123-8163
	230...240 VAC	609-6114	123-8156	123-8158	123-8160	123-8162	123-8164

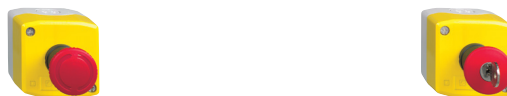
3 Double and triple-headed pushbuttons

Type		1 flush 1 projecting		1 flush 1 projecting	2 flush	
Contact		NO + NC		NO + NC with 24V pilot light		
Connection		Screw clamp terminals				
Complete product		123-8165		123-8172	–	
Body		609-3165		609-3165 + 610-2815		
Head		746-9636		123-8177	817-4922	

Harmony XAL plastic control stations



Number and type of pushbuttons	1 start or stop			1 start and stop		
Colour or type	● Green	● Green	● Red	● Handle	● Key	
Marking	"I" (white)	"START" (white)	NC (white)	"O-I" (white)	"O-I" (white)	
Contact	NO		NC	NO		
Connection	Screw clamp terminals					
Complete product	Flush pushbutton	330-8464	746-9349	330-8470	–	–
	Selector switch	–	–	–	330-8486	330-8492



Number and type of pushbuttons

Number and type of pushbuttons	Ø 40 trigger action Emergency stop mushroom head pushbutton					
Colour	● Red					
Type	Turn to release			Key release		
Contact	NC	2 NC	2 NC + NO	NC	2 NC	2 NC + NO
Connection	Screw clamp terminals					
Complete product	795-1295	330-8587	609-4714	795-1302	330-8593	330-8600



Number and type of pushbuttons

Number and type of pushbuttons	2 start and stop flush mounting			2 up/down flush mounting		
Colour/Marking	1 "I" green	1 "Start green"	1 pilot light 24 VDC	1 "Up" white		
	1 NC red	1 "Stop" red	1 "I" green	1 "Down" black	1 NC red	1 E-stop red
	–	–	1 NC red	–	1 "Down" black	
Contact	NO + NC			2 NO	NO + NC + NO	
Connection	Screw clamp terminals					
Complete product	330-8509	518-558	609-4663	330-8515	330-8521	123-8137

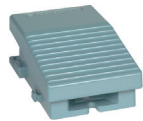
Other control components



Harmony XD4 joystick controllers				
Number of directions	2	4	2	4
Contact	1 NO per direction			
Position	Stay put		Spring return	
Reference	609-6776	199-157	609-9860	609-9876



Harmony cam switches						
Function	Ammeter	Voltmeter	Changeover	ON-OFF switches		Stepping
Thermal current	12 Amps					
Number of poles	6	6	4	1	3	3
Multi-screw fixing	123-8133	123-8134	123-8132	123-8128	123-8130	608-8905
Ø 22 fixing	257-1245	257-1251	123-8131	123-8127	123-8129	257-1239



Harmony XPE foot switches				
Material-Colour	Metal blue		Plastic black	Metal blue
Cover	No		Yes	
Contact	1 NC + 1 NO		1 NC + 1 NO	2 NC + 2 NO
Reference	280-8626	123-8173	827-108	609-7123



Harmony XB5S biometric switches			
Receiver	Monostable		Bistable
Power supply	24 VDC/PNP output		
Cable 2 m	684-3718	684-3705	
M12 connector	684-3711	684-3709	

Harmony remote control system and pendant control stations for hoisting



Starting kit comprising of Remote control system + accessories + USB/RJ45 cable			
Remote control device	LED display	LCD display	LCD display
Motion pushbuttons	6	6	6
Auxillary pushbuttons	2	2	6
Base Station	Wired connection		Wired connection
Outputs	12 relays + 2 safety relays	18 relays + 2 safety relays	18 relays + 2 safety relays
Inputs		18 digital (12 limiters + 6 alarms)	18 digital (12 limiters + 6 alarms)
Reference	123-8181	123-8180	123-8179



Harmony XACA pendant control stations for Ø 22 plastic signaling units					
Number of pushbuttons	2	3	4	6	8
Type	Pistol grip			Standard	
Colour	Yellow			Yellow	
Pushbutton 1: Raise (1)	Yes	Yes	Yes	Yes	Yes
Pushbutton 2: Lower (1)	Yes	Yes	Yes	Yes	Yes
Emergency stop (2)	–	Yes	–	–	–
Pushbutton 3: Left (1)	–	–	Yes	Yes	Yes
Pushbutton 4: Right (1)	–	–	Yes	Yes	Yes
Pushbutton 5: Forward (1)	–	–	–	Yes	Yes
Pushbutton 6: Reverse (1)	–	–	–	Yes	Yes
Pushbutton 7: O (1)	–	–	–	–	Yes
Pushbutton 8: I (1)	–	–	–	–	Yes
Reference	609-4427	123-8135	251-2577	123-8136	609-4499

(1) With NO contact (2) With NC contact

Other control components

Upgrade the aesthetics of your Harmony XB4 & XB5 devices with the new Harmony flush mounting kit



Flush mounting kits	
917-6682	Plastic flush mounting kit for Ø22 pushbutton and pilot light
917-6686	Plastic flush mounting kit for Ø22 selector switch and ill.pushbutton
917-6695	Plastic flush mounting kit for legend 8x27 pushbutton and pilot light
918-0701	Plastic flush mounting kit for legend 8x27 selector switch and ill.pushbutton
918-0704	Plastic flush mounting kit for legend 18x27 pushbutton and pilot light
918-0708	Plastic flush mounting kit for legend 18x27 selector switch and ill.pushbutton
922-4971	Metal flush mounting kit for Ø22 pushbutton and pilot light
922-4980	Metal flush mounting kit for Ø22 selector switch and ill.pushbutton



Harmony XB5R wireless and batteryless devices	
Transmitters	
815-1755	1 radio frame sent at the push of the button
111-5725	1 radio frame sent at the push of the button 1 radio frame sent at the release of the button
828-3004	Rope pull switch
Receivers	
739-8070	Monostable, Bistable, Stop/Start - 2 Relay outputs
739-8089	Monostable - 4 PNP
Heads and Accessories	
815-1759	Flush blank head for use with caps
815-1761	Pack of mixed caps for use with head
609-3143	Fixing collar for use with ZB5RZA0
815-3896	40mm mushroom head
837-0994	Handy box - 1 cut out
837-1007	Handy box - 2 cut out
837-0990	Holder for handy box

Harmony XVU and XVR3 signaling solutions

Harmony XVU components for Ø 60 modular tower lights



1 IP 65 light modules (for association)								
Voltage	24 V							
LED unit type	High brightness							Pulse signal
Colour	● Green	● Red	● Orange	● Blue	○ White	● Yellow	Multi-colour	Multi-colour
Reference	881-2797	881-2791	881-2801	881-2804	881-2808	881-2817	881-2810	881-2814
2 IP 54 audible units (for association)								
Voltage	24 V							
Unit type	Buzzer		Sound	Pulse signal				
Colour	● Black	○ Silver	● Black	● Black				
Reference	881-2823	881-2826	881-2820	881-2839				
3 IP 65 body units with top cover (for association)								
Voltage	24 VAC/DCC			100...240 VAC				
Colour	● Black	○ Silver	● Black	● Black	○ Silver			
Type	–	–	NPN	PNP	PNP			
Reference	881-2832	881-2836	881-2845	881-2848	881-2842			
4 Mounting bases (for association)								
Base type	Adjustment pole	Fixing plate 100 mm/3.937 in		Direct mounting plates				
Colour	● Black	● Black	○ Silver	● Black	○ Silver			
Reference	881-2867 (1)	881-2860	881-2864	881-2873	881-2876			
	–	–	–	881-2870 (2)	–			
	–	–	–	881-2889 (3)	–			
Accessories (for association)								
Unit type	Body extender		Flexible element (for horizontal or vertical support)					
Colour	● Black	○ Silver	● Black					
Reference	881-2851	881-2854	881-2858					

(1) For use with DC body unit only (2) 2-pin mounting (3) 4-pin mounting

Harmony XVR3 complete units



Pre cabled motorless flashing & rotating beacons						
	Voltage	Colour				External lens
		● Green	● Red	● Orange	● Blue	
Without Buzzer	12-24dc	901-2421	901-2440	901-2459	901-2469	901-2563
	100-230ac	901-2504	901-2510	901-2538	901-2544	
With Buzzer	12-24dc	901-2437	901-2447	901-2462	901-2471	
	100-230ac	901-2516	901-2522	901-2532	901-2557	