




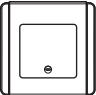
Application Guide Intermediate Switch

CAT. NO.
E3031HIA**
E3031VIA**

NEO

Thank you for using **Schneider Electric** NEO Intermediate Switch. To ensure proper application of our product, please read the following information before installation and use.

This application guide applies to the following switches:

	Cat. no.	Description
	E3031HIA**	16AX/20A Intermediate Switch, Horizontal
	E3031VIA**	16AX/20A Intermediate Switch, Vertical

Remark:

- ** -EB with Blue LED
- EW with White LED
- FW with White Fluorescent Indicator
- FG with Green Fluorescent Indicator

FEATURES

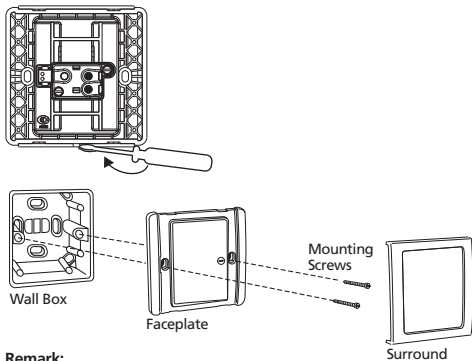
1. Distinctive and superior dolly switch design.
2. Large dolly with curved profile for smooth switch action.
3. Built-in LED as load indicator. It replaces neon, consumes less power and provides a soothing lighting effect.
4. Slim and stylish flush plate finishes with cross-type structural support to provide extra rigidity to flush plate.

SPECIFICATIONS

Voltage	: 250VAC 50HZ
Maximum Current Rating	: 16AX
Wire Size	: 4mm ²
Dimension	: 87mm X 87mm
Mounting Centre	: 60.3mm
Compliance	: IEC60669-1

MOUNTING INSTRUCTION

Please refer to the following diagram for proper installation of the faceplate and surround.



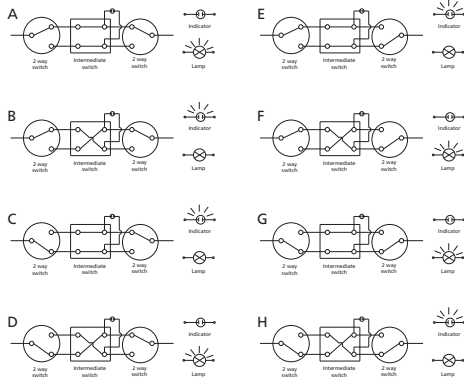
Remark:

For surround mounting, align the clip locks on the faceplate and press firmly on the surround. Complete engagement of the clip locks is indicated by a clear "click" sound.

IMPORTANT NOTE

Please check your local wiring regulation before actual installation

WIRING DIAGRAM



TROUBLE SHOOTING

When used with certain models of Compact Fluorescent Lamp (CFL), LED light source, electronic transformer and energy saving bulb, and there is flickering of LED on switch, please add 0.1 μ F 275Vac class x2 capacitor as per following installation diagram.

