

Patents and Patents Pending

**2 & 3 WAY, SOLENOID PILOT AND
REMOTE AIR PILOT OPERATED, INLINE**
1/2" TO 2 1/2" - C_v UP TO 65.0
PRESSURE RANGE: VACUUM TO 150 PSI



57 SERIES

PIPE SIZE	N.C. MAIN VALVE FUNCTION		N.O. MAIN VALVE FUNCTION			
	N.C. PILOT AND N.C. MAIN SPOOL		N.O. PILOT AND N.C. MAIN SPOOL		N.C. PILOT AND N.O. MAIN SPOOL	
1/2" NPTF	57C-11-111BA	57C-31-111BA	57C-21-111BA	57C-41-111BA	57C-61-111BA	57C-71-111BA
3/4" NPTF	57C-12-111BA	57C-32-111BA	57C-22-111BA	57C-42-111BA	57C-62-111BA	57C-72-111BA
1" NPTF	57C-13-111BA	57C-33-111BA	57C-23-111BA	57C-43-111BA	57C-63-111BA	57C-73-111BA

Valve codes shown are for 120/60, 110/50, 24 volt DC (6 watt) triple rated coils, non-locking recessed manual operators and grommet type electrical connections. For other options see opposite page.

Note: Exhaust port always 1".

58 SERIES

PIPE SIZE	INTERNAL	EXTERNAL	INTERNAL	EXTERNAL	INTERNAL	EXTERNAL
1" NPTF	58C-11-222CA	58C-31-222CA	58C-21-222CA	58C-41-222CA	58C-61-222CA	58C-71-222CA
1 1/4" NPTF	58C-12-222CA	58C-32-222CA	58C-22-222CA	58C-42-222CA	58C-62-222CA	58C-72-222CA
1 1/2" NPTF	58C-13-222CA	58C-33-222CA	58C-23-222CA	58C-43-222CA	58C-63-222CA	58C-73-222CA

Valve codes shown are for 24/60, 24/50 coils, locking recessed manual operators with 1/2" NPS electrical conduit connections. For other options see opposite page.

Note: Exhaust port always 1 1/2".

59 SERIES

PIPE SIZE	INTERNAL	EXTERNAL	INTERNAL	EXTERNAL
2" NPTF	59B-12-619AA	59B-32-619AA	59B-22-619AA	59B-42-619AA
2 1/2" NPTF	59B-13-619AA	59B-33-619AA	59B-23-619AA	59B-43-619AA

N.O. Main Spool not available on 59 series

Valve codes shown are for 24 volt DC (8.5 watt) coils, locking extended manual operators with light and JIC wiring box with 1/2" NPS electrical conduit connections. For other options see opposite page.

Note: Exhaust port always 2 1/2".

B11



REMOTE AIR OPERATED

57 SERIES

PIPE SIZE	N.C. MAIN VALVE	N.O. MAIN VALVE
1/2" NPTF	57C-51 RA	57C-81 RA
3/4" NPTF	57C-52 RA	57C-82 RA
1" NPTF	57C-53 RA	57C-83 RA

Note: Exhaust port always 1".

58 SERIES

1" NPTF	58C-51 RA	58C-81 RA
1 1/4" NPTF	58C-52 RA	58C-82 RA
1 1/2" NPTF	58C-53 RA	58C-83 RA

Note: Exhaust port always 1 1/2".

59 SERIES

PIPE SIZE	N.C. MAIN VALVE
2" NPTF	59B-52 RA
2 1/2" NPTF	59B-53 RA

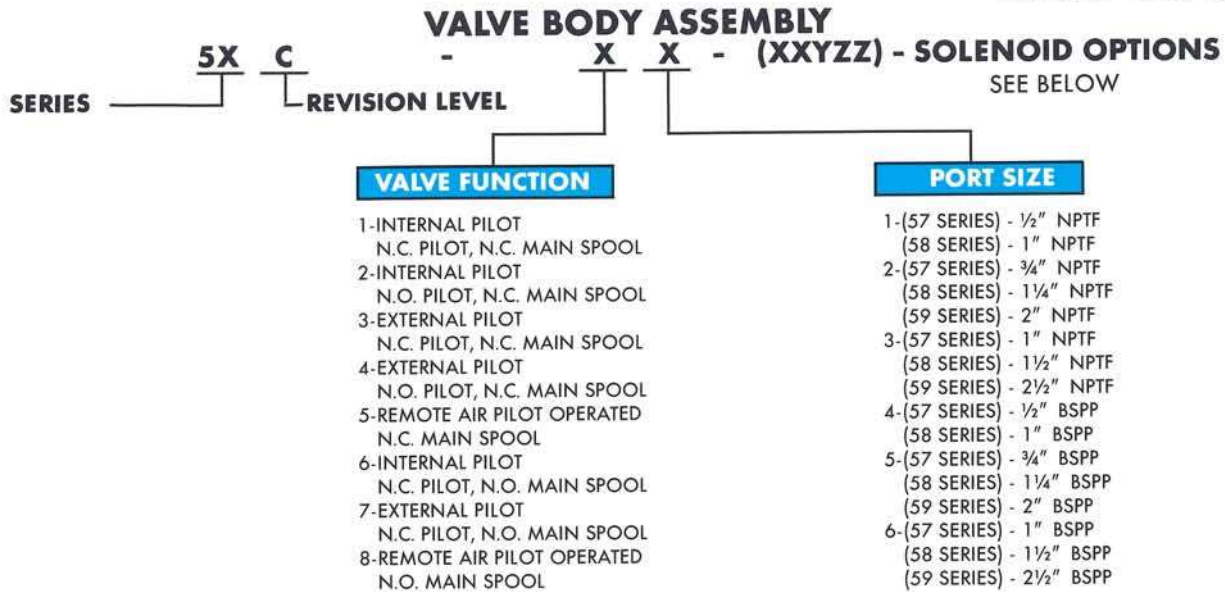
N.O. MAIN SPOOL NOT AVAILABLE ON 59 SERIES

Note: Exhaust port always 2 1/2".

All MAC Valves available with BSPP threads: to order see opposite page.

Consult "Precautions" on inside back cover before use, installation or service of MAC Valves.

HOW TO ORDER



REMOTE AIR PILOT & SOLENOID OPTIONS (SAME FOR THE 57,58 & 59 SERIES)

EXAMPLE:

XX	REMOTE AIR PILOT	XX	AC VOLTAGE	XX	DC VOLTAGE	Y	MANUAL OPERATOR INDICATOR LIGHTS	ZZ	ENCLOSURE
RA	25-150 PSI	11	120/60, 110/50 24 VDC (6W)	50	24 VDC (6.0W)	0	No Operator	AA	JIC w/1/2" NPS Conduit
RE	VAC-25PSI	12	240/60, 220/50	52	24 VDC (2.5W)	1	Non-Locking Recessed (Std.)	BA	Grommet
		22	24/50-60	55	12 VDC (6.0W)	2	Locking Recessed	CA	Conduit 1/2" NPS
		25	240/50	60	12 VDC (8.5W)	3	Non-Locking Extended	CC	Conduit 1/2" NPT (CSA Threads)
				61	24 VDC (8.5W)	4	Locking Extended	EA	Hazardous Location ^①
						5	No Operator with Light ^②		
						6	Non-Locking Recessed w/Lgt. ^②		
						7	Locking Recessed w/Lgt. ^②		
						8	Non-Locking Extended w/Lgt. ^②		
						9	Locking Extended w/Lgt. ^②		

If RA or RE selected, Y & ZZ options do not apply.
Example: 57C-51-RA

Other AC & DC Voltages Available. DC Wattages from 1.0 to 17 Watts. See page T-2 or Consult Factory.

External Plug-Ins available. See page T-3 or consult factory.

① Hazardous Location enclosure supplied with no operator only ("O"). DC not available below 6 watts.

② Lights are available for 120/60, 110/50 or 240/60, 220/50 or 24 VDC with JIC enclosure only (AA) If 11 Coil is used for 24 VDC. Specify Mod. 0472 for 24V Light.

B12

MODIFICATIONS - To order, include MOD after valve model number; e.g. 58C-11-111 BA **MOD CLSF**

MOD CLSF - High Temperature AC or DC class F coil option.

For additional list of modifications see Technical Section.

R-59003 PILOT BLOCK



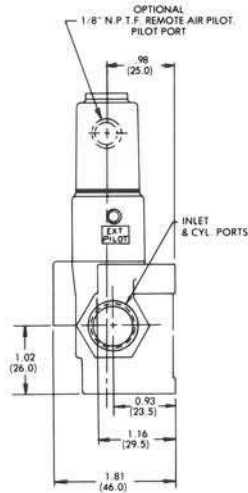
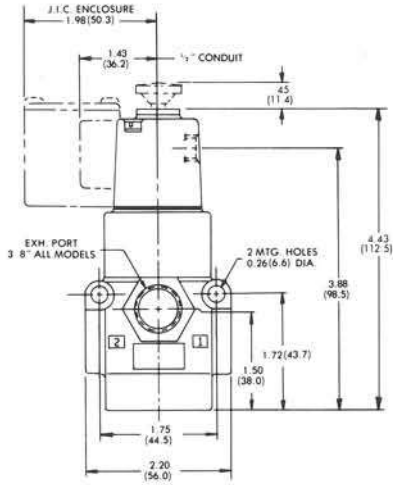
Any 57, 58 or 59 Series Solenoid Operated valve can be converted to remote air operation by replacing the solenoid pilot valve with the R-59003 pilot block. This pilot block plus an external pilot supply are used for vacuum and low pressure applications.

*Certain MAC Valves are approved by U.L. & C.S.A. For details see Technical Section.
Consult "Precautions" on inside back cover before use, installation or service of MAC Valves.*

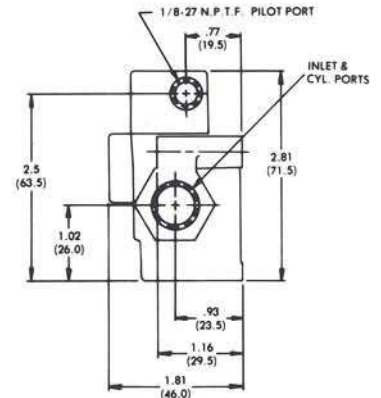
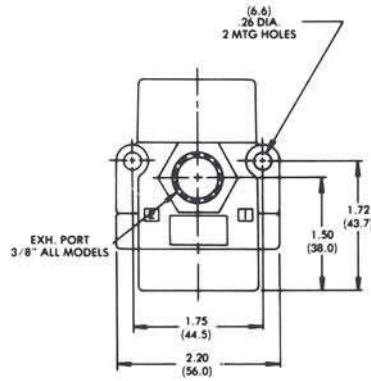
DIMENSIONS 55 & 56 SERIES

DIMENSIONS - 55 SERIES

SOLENOID & REMOTE AIR PILOT, PILOT OPERATED

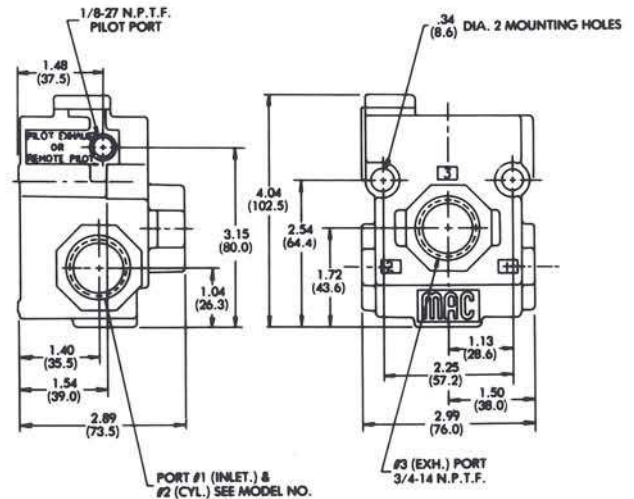
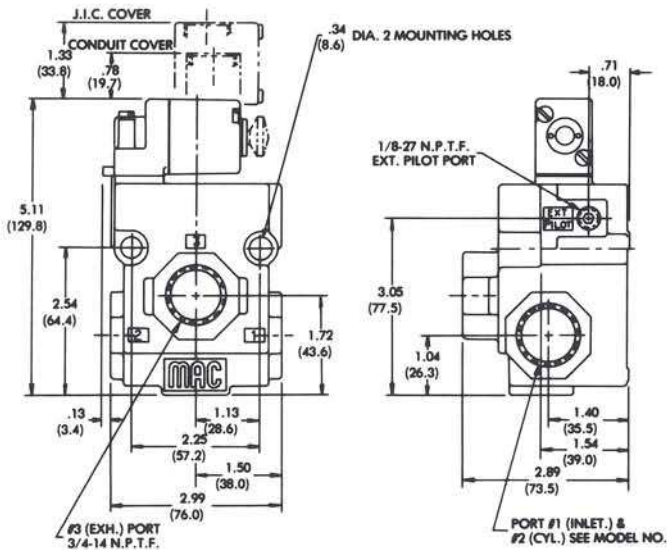


REMOTE AIR PILOT OPERATED



B13

DIMENSIONS - 56 SERIES

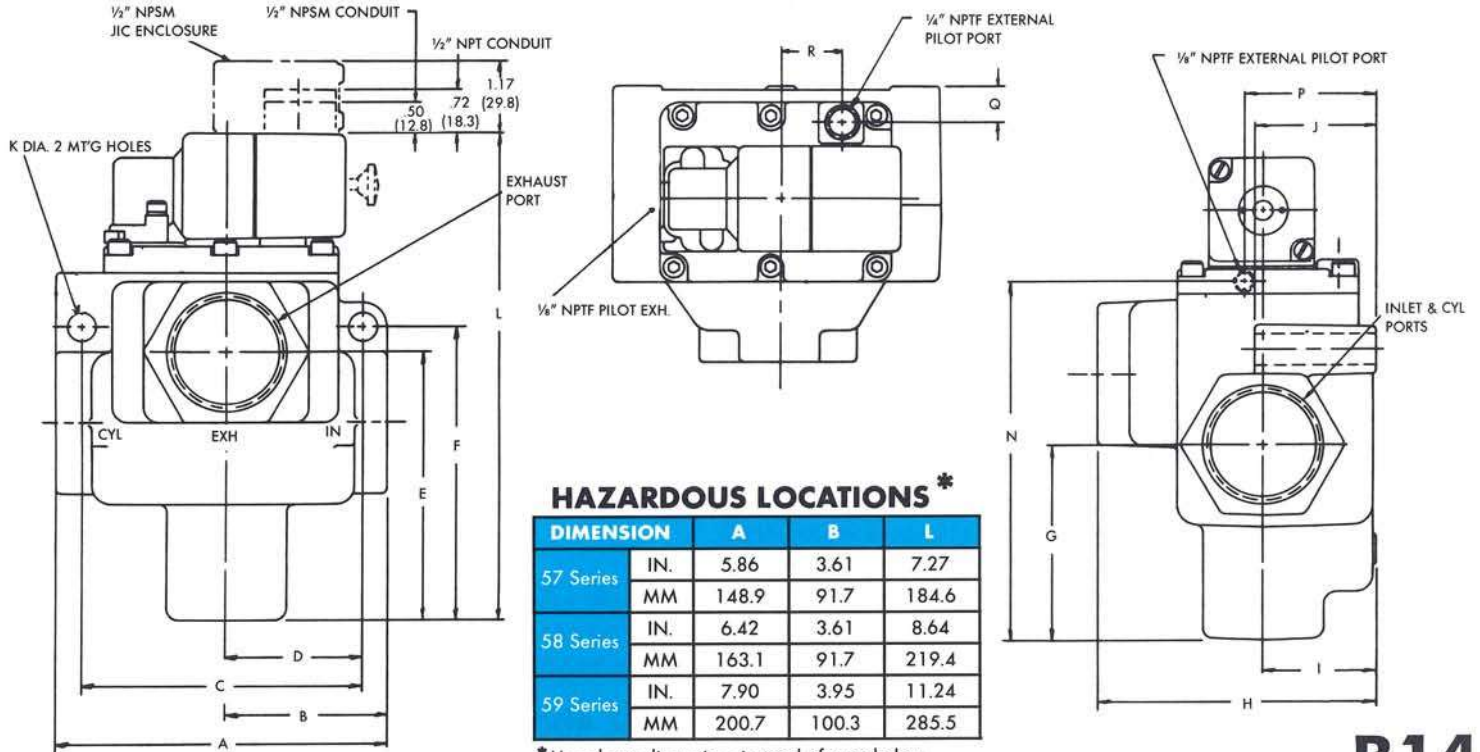


DIMENSIONS SHOWN IN BRACKETS ARE METRIC (MM)

GOLD FASTENERS ARE METRIC.

Consult "Precautions" on inside back cover before use, installation or service of MAC Valves.

SOLENOID PILOT OPERATED MODELS



HAZARDOUS LOCATIONS *

DIMENSION	A	B	L	
57 Series	IN.	5.86	3.61	7.27
	MM	148.9	91.7	184.6
58 Series	IN.	6.42	3.61	8.64
	MM	163.1	91.7	219.4
59 Series	IN.	7.90	3.95	11.24
	MM	200.7	100.3	285.5

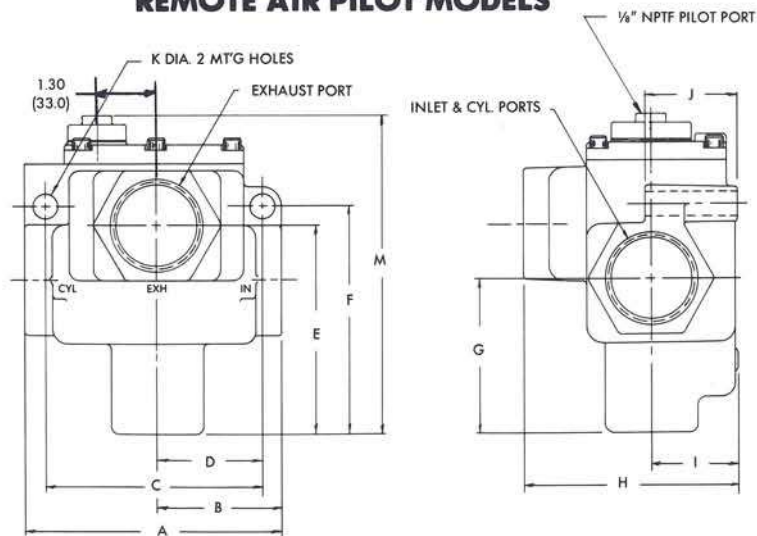
*Use above dimensions instead of ones below.

B14

DIMENSION	A	B	C	D	E	F	G	H	I	J	K	L	M	N	P	Q	R	
57 Series	INCHES	4.42	2.13	3.25	1.56	3.56	3.56	2.43	3.81	1.68	1.80	.34	6.88	5.67	4.78	2.19	.40	1.03
	MM	112.3	54.1	82.6	39.7	90.4	90.4	61.7	96.8	42.7	45.7	8.6	174.9	143.9	121.5	55.7	10.2	26.2
58 Series	INCHES	5.66	2.77	4.66	2.27	4.50	4.91	3.31	4.57	1.88	2.00	.53	8.25	7.04	6.15	2.39	.60	1.03
	MM	143.7	70.3	118.4	57.7	114.3	124.7	84.1	116.1	47.8	50.8	13.5	209.7	178.7	156.3	60.8	15.3	26.2
59 Series	INCHES	7.90	3.95	6.13	3.06	6.12	6.87	4.37	6.20	2.65	3.34	.53	10.69	9.46	8.46	2.20	—	—
	MM	200.7	100.3	155.6	77.8	155.4	174.5	111.0	157.5	67.3	84.8	13.5	271.6	240.3	215.0	55.8	—	—

57 Series w/2.5 watt & 1.0 watt solenoids Dim "A" is 4.64" (117.8MM) & "B" is 2.39" (60.6MM)
 Note: Exhaust port is always maximum available port size for any given series.

REMOTE AIR PILOT MODELS



DIMENSIONS SHOWN IN BRACKETS ARE METRIC (MM)

Certain MAC Valves are approved by U.L. & C.S.A. For details see Technical Section.
 Consult "Precautions" on inside back cover before use, installation or service of MAC Valves.