



# CorePro LEDtube EM/ Mains T8

## CorePro LEDtube 1200mm 16W 840 T8 AP I

Philips CorePro LEDtubes are the quick and easy way to replace T8 fluorescent or other LED tubes with a fast pay back time. Not only does the Core range of LEDtubes require a low initial investment, but LED energy efficiency also delivers instant savings that you can bank on over a long and reliable lifetime. Plus, with the same lamp size and light distribution as fluorescent alternatives, you'll never know the difference. There are two ways to install these LED tubes: Rewire your existing fluorescent-based luminaires so the CorePro LEDtubes work directly on the Mains. Or simply change the fluorescent starter to an LED starter that can be used with your Electromagnetic ballasts.

### Warnings and Safety

- NOTE: The overall energy efficiency and light distribution of any installation that uses these lamps will be determined by the design of the installation.
- Installation must be done according to the installation diagrams provided with the lamp or available online. Installation must be done by a certified professional.

### Product data

General Information			
Lighting Technology	LED	Color Designation	Cool White (CW)
Switching Cycle	200,000	Correlated Color Temperature (Nom)	4000 K
Nominal lifetime	30,000 hour(s)	Luminous Efficacy (rated) (Nom)	112.00 lm/W
Cap-Base	G13 [Medium Bi-Pin Fluorescent]	Color Consistency	<6
		Color rendering index (CRI)	80
		LLMF At End Of Nominal Lifetime (Nom)	70 %
Light Technical		Operating and Electrical	
Color Code	840 [CCT of 4000K]	Line Frequency	50 to 60 Hz
Beam Angle (Nom)	240 degree(s)	Input Frequency	50 to 60 Hz
Luminous Flux	1,800 lumen		

CorePro LEDtube EM/Mains T8

Power Consumption	16 W
Starting Time (Nom)	0.5 s
Warm-up time to 60% light	0.5 s
Power Factor (Fraction)	0.9
Voltage (Nom)	220-240 V

Temperature

Ambient temperature range	-20 °C to 45 °C
T-Case Maximum (Nom)	50 °C

Controls and Dimming

Dimmable	No
----------	----

Mechanical and Housing

Bulb Finish	Frosted
Bulb Material	Glass
Product Length	1,200 mm
Bulb Shape	Tube, double-ended

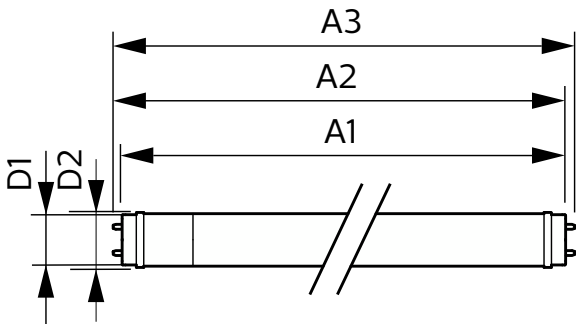
Approval and Application

Energy Saving Product	Yes
Approval Marks	RoHS compliance CE marking KEMA Keur certificate
EU RoHS compliant	Yes

Product Data

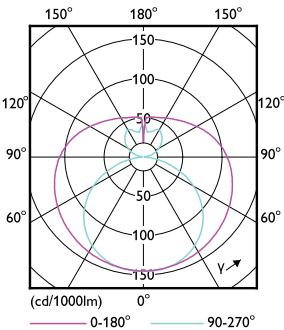
Full product code	871951444703500
Order product name	CorePro LEDtube 1200mm 16W 840 T8 AP I
Order code	929003520308
Numerator - Quantity Per Pack	1
Numerator - Packs per outer box	20
Material number (12NC)	929003520308
Full product name	CorePro LEDtube 1200mm 16W 840 T8 AP I
EAN/UPC - Case	8719514447042

Dimensional drawing

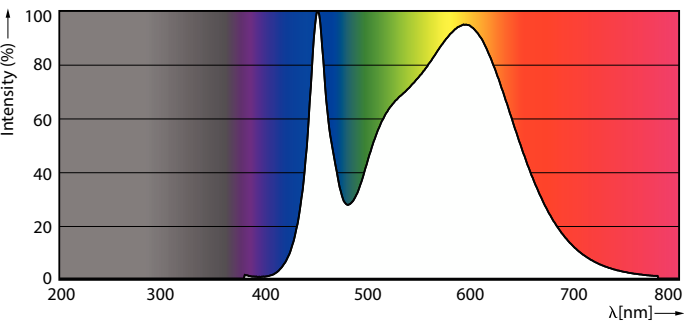


Product	D1	D2	A1	A2	A3
CorePro LEDtube 1200mm 16W 840 T8 AP I	25.7 mm	28 mm	1,198 mm	1,205 mm	1,212 mm

Photometric data



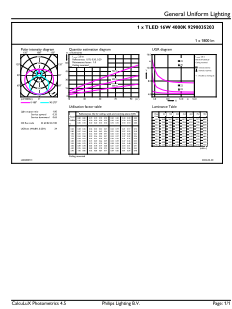
Light Distribution Diagram - CorePro LEDtube 1200mm 16W 840 T8 AP I



Spectral Power Distribution Colour - CorePro LEDtube 1200mm 16W 840 T8 AP I

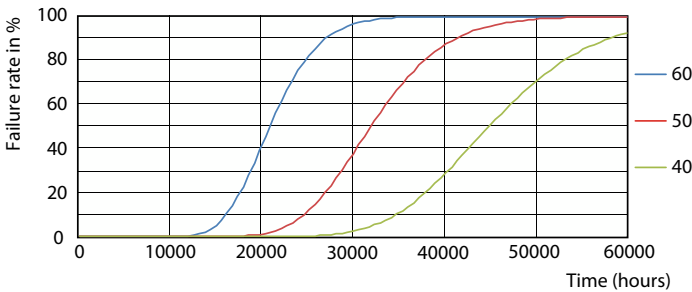
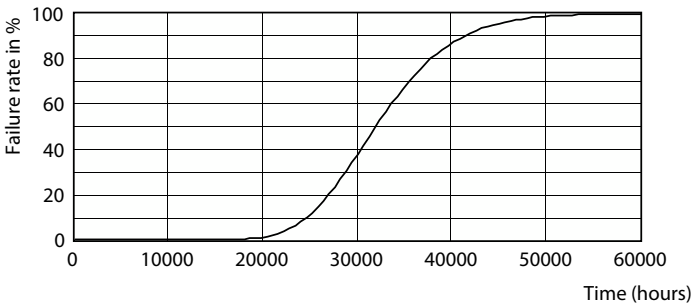
CorePro LEDtube EM/Mains T8

Photometric data

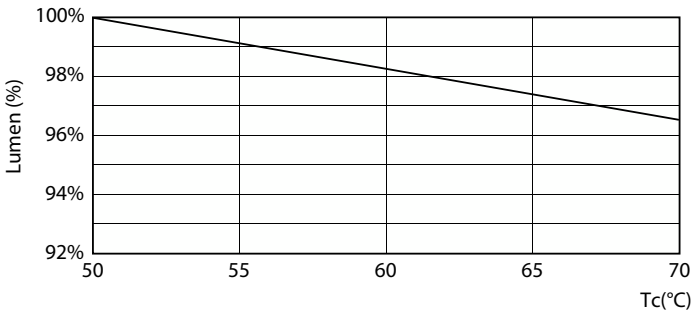


General uniform lighting - CorePro LEDtube 1200mm 16W 840 T8 AP I

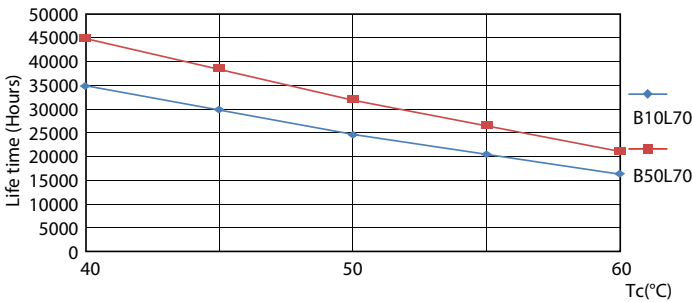
Lifetime



Life Expectancy Diagram - CorePro LEDtube 1200mm 16W 840 T8 AP I



Life Expectancy Diagram - CorePro LEDtube 1200mm 16W 840 T8 AP I



Lumen Maintenance Diagram - CorePro LEDtube 1200mm 16W 840 T8 AP I

Life Expectancy Diagram - CorePro LEDtube 1200mm 16W 840 T8 AP I

CorePro LEDtube EM/Mains T8

Lifetime



Lumen Maintenance Diagram - CorePro LEDtube 1200mm 16W 840 T8 AP I

