



## Specifications:

### Mechanical:

Max. Operating Force	: 40gf
Max. Stroke	: 2.15mm
Operating Temperature	: -10°C to +60°C
Storage Temperature	: -20°C to +70°C
External Height	: 2mm
External Width	: 5.5mm
External Depth	: 5.2mm

### Electrical:

Electrical Life	: 50,000 cycles
Rating	: 50mA, 20V DC
Maximum Contact Resistance	: 1Ω
Minimum Insulation Resistance	: 100MΩ at 100V DC
Dielectric Strength	: 100V AC/1minute
Contact Arrangement	: 1 pole 1 throw
Contact Configuration	: SPST-NO
Operating Force	: 0.39N

### Material:

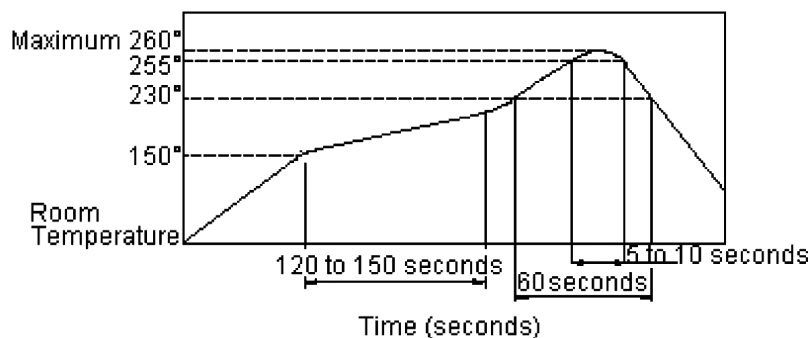
Cover	: Copper alloy, tin plated
Base	: High-temperature thermoplastic Colour : Black
Stem	: High-temperature thermoplastic Colour : Black
Contact Disc	: Stainless with silver cladding
Terminal	: Brass with silver plated
Switch Terminals	: Solder
Terminal Type	: Surface Mount

### Soldering Process:

#### For best results, please follow these recommendations:

Hand Soldering	: Use a soldering iron of 30W, controlled at 608°F (320°C) approximately 2 seconds while applying
Reflow Soldering	: When applying reflow soldering, the peak temperature or the reflow oven should be set to 260°C maximum

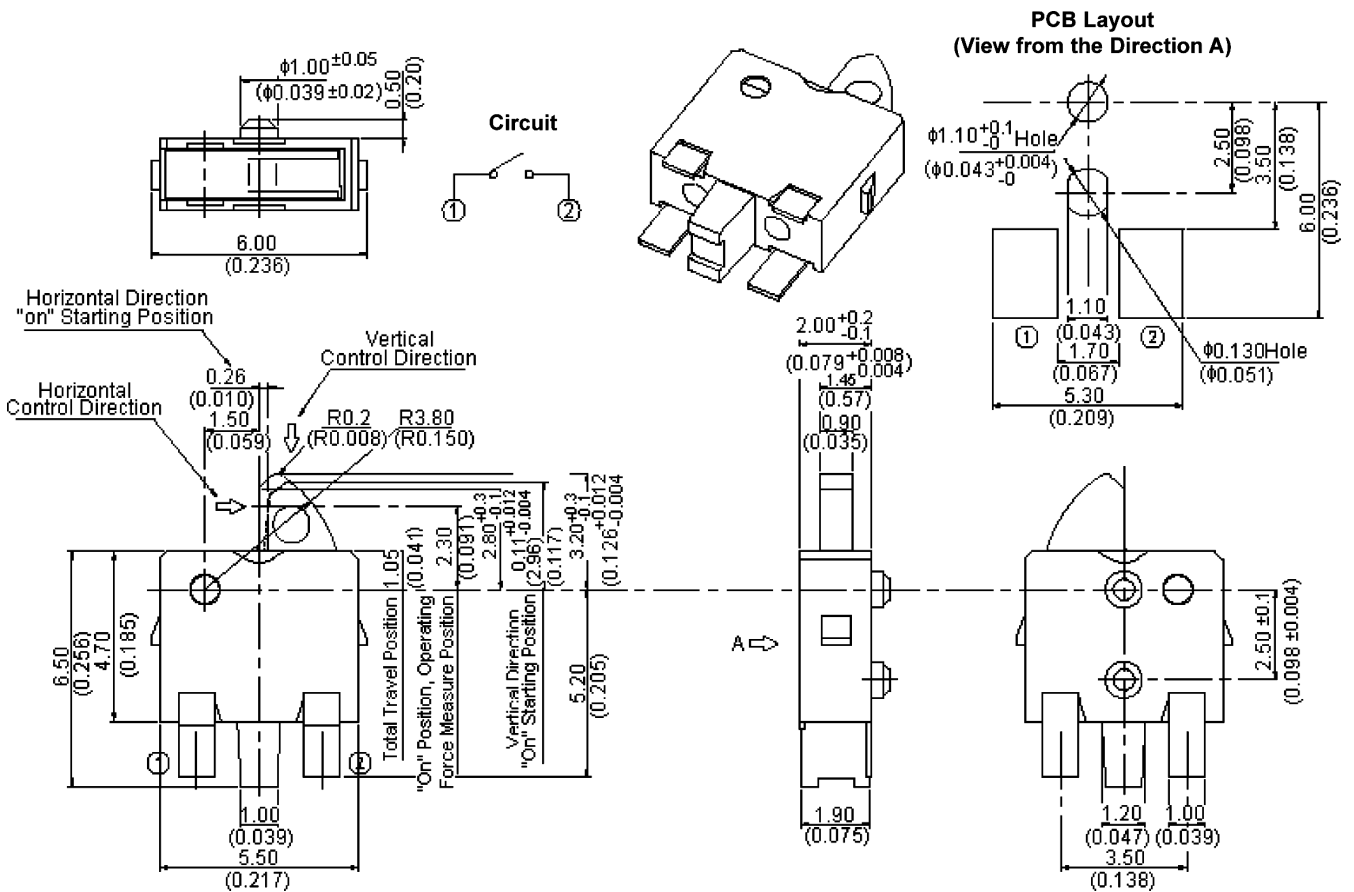
### Reflow Temperature Profile:



# Detector Switch - Card

**multicomp** PRO

## MCTE-MRR



Dimensions : Millimetres (Inches)

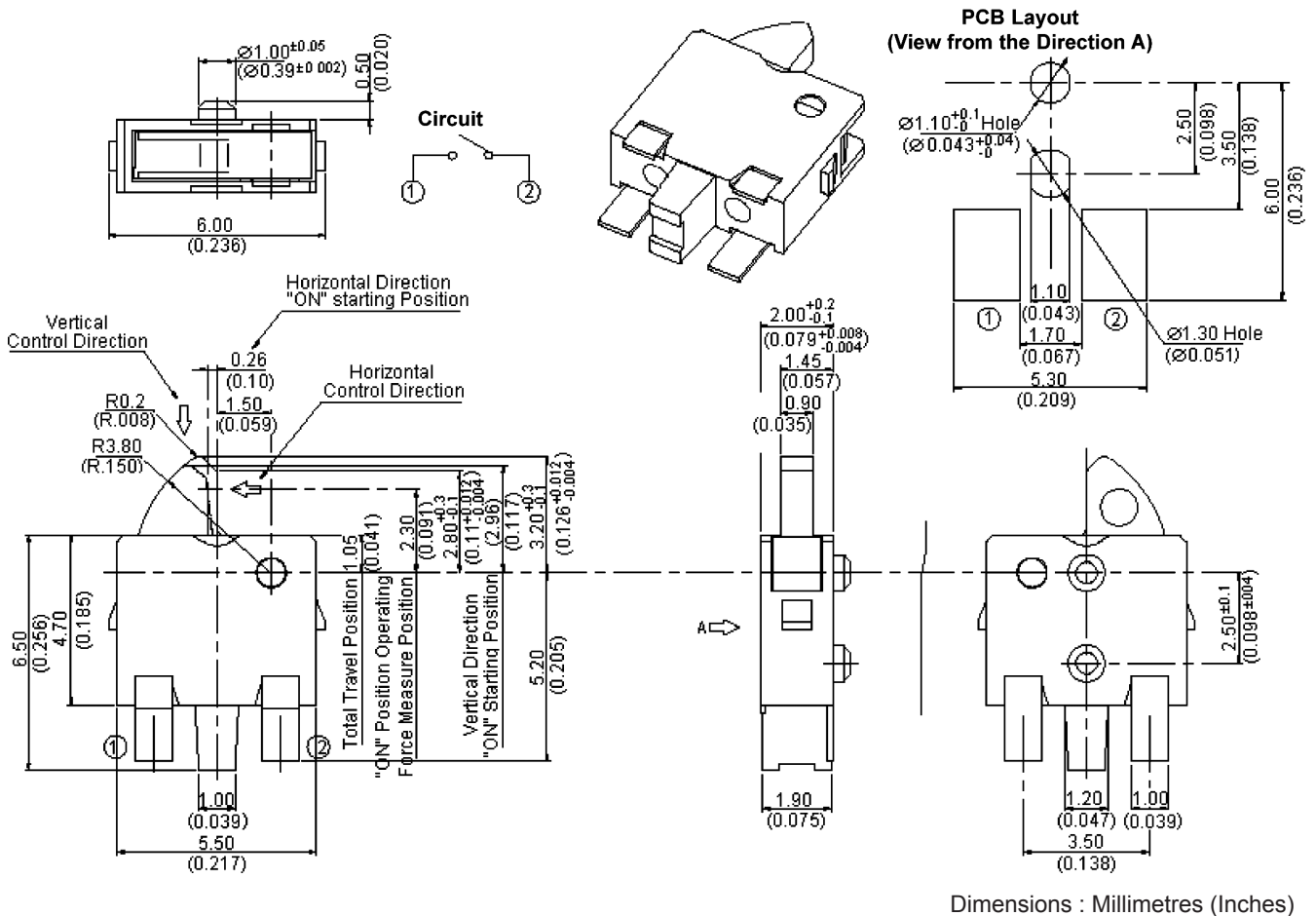
Newark.com/multicomp-pro  
 Farnell.com/multicomp-pro  
 Element14.com/multicomp-pro

**multicomp** PRO

# Detector Switch - Card

**multicomp** PRO

## MCTE-MRL



### Part Number Table

Description	Part Number
Switch, Card Detect, Right, SMD	MCTE-MRR-V
Switch, Card Detect, Left, SMD	MCTE-MRL-V

**Important Notice :** This data sheet and its contents (the "Information") belong to the members of the AVNET group of companies (the "Group") or are licensed to it. No licence is granted for the use of it other than for information purposes in connection with the products to which it relates. No licence of any intellectual property rights is granted. The Information is subject to change without notice and replaces all data sheets previously supplied. The Information supplied is believed to be accurate but the Group assumes no responsibility for its accuracy or completeness, any error in or omission from it or for any use made of it. Users of this data sheet should check for themselves the Information and the suitability of the products for their purpose and not make any assumptions based on information included or omitted. Liability for loss or damage resulting from any reliance on the Information or use of it (including liability resulting from negligence or where the Group was aware of the possibility of such loss or damage arising) is excluded. This will not operate to limit or restrict the Group's liability for death or personal injury resulting from its negligence. Multicomp Pro is the registered trademark of Premier Farnell Limited 2019.

Newark.com/multicomp-pro  
 Farnell.com/multicomp-pro  
 Element14.com/multicomp-pro

**multicomp** PRO