

FEATURES

- Rated Voltages 415V a.c./250V d.c.
- Breaking Capacities 80kA a.c. 40kA d.c.
- Breaking Range and Utilisation Category gG/gM

RS PRO BS INDUSTRIAL FUSE-LINKS WITH BOLTED CONNECTIONS

RS Stock No.: 2213698, 2213699



RS Professionally Approved Products bring to you professional quality parts across all product categories. Our product range has been tested by engineers and provides a comparable quality to the leading brands without paying a premium price.

Slotted Tag Fuses

Product Description

Type “N” & “T” fuse-links are for use in industrial installations and can be fitted into BS88 bolted fuse-holders and distribution fusegear.

Dimensions and current ratings of the type N&T Industrial Fuse-Links comply with the standardized requirements of IEC 60269-2 and BS 88-2. Additional types and current ratings are included in the range. N&T Industrial Fuse-Links can be fitted in Boltin Fuse-Holders or suitable fusegear.

General Specifications

| | |
|----------------|---------------------|
| Current Rating | 32A motor rated 50A |
| Fuse Size | A1 |
| Voltage Rating | 250 V dc, 415 V ac |
| Fuse Standard | IEC 60269-2/BS 88-2 |
| Fixing Centres | 44.5 mm |
| Tag Width | 9.5 mm |
| Overall Length | 56 mm |
| Body Diameter | 12.7 mm |
| Body Length | 33 mm |

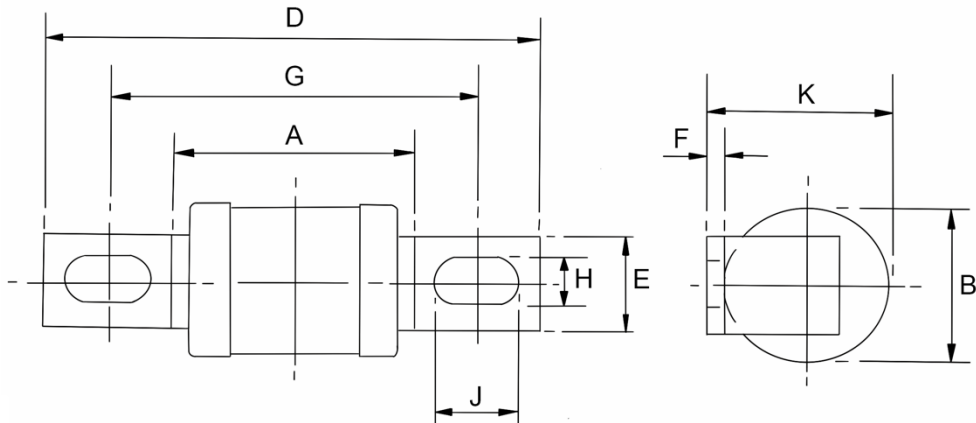
Approvals

| | |
|----------------------|---------------------|
| Standards Met | IEC 60269-2/BS 88-2 |
|----------------------|---------------------|

Similar Products

| Stock No. | Brand | Voltage Rating a.c. Volt | Current Rating Amps |
|------------|--------|--------------------------|---------------------|
| (221-3702) | RS PRO | 415 | 6 |
| (221-3691) | RS PRO | 415 | 10 |
| (221-3693) | RS PRO | 415 | 25 |
| (221-3695) | RS PRO | 415 | 40 |
| (221-3700) | RS PRO | 415 | 63 |

Slotted Tag Fuses



| Voltage Rating (V) | Current Rating (A) | Fig No. | Dimensions in millimetres | | | | | | | | |
|--------------------|--------------------|---------|---------------------------|--------|--------|--------|--------|--------|--------|------------|--------|
| | | | A max. | B max. | D max. | E nom. | F max. | G nom. | H nom. | J min. | K max. |
| 240 | 2-32 | 1 | 33 | 12.7 | 56 | 9.5 | 0.8 | 44.5 | 4.8 | Open ended | 14.3 |