



ENGLISH

**Product Datasheet**  
**PA Series**  
**Sub-miniature pushbutton Switch**





**Package Contain:**

**1 x Nut**

**1 x Locking Washer**

**1 x Rubber Washer**

**Specification:**

<b>SWITCH TYPE:</b>		<b>PUSHBUTTON</b>
<b>POLES/THROWS:</b>		<b>SPST</b>
<b>SWITCH FUNCTIONS:</b>		<b>PAS6: OFF-MOM. / PAS7: ON-OFF(MOM)</b>
<b>ELECTRICAL CHARACTERISTICS</b>	<b>CONTACT RATING:</b>	<b>400mA @32VAC Max. 100mA @50VDC Max. 125mA @125VAC Max.</b>
	<b>ELECTRICAL LIFE:</b>	<b>500,000 make-and-break cycles at full load</b>
	<b>CONTACT RESISTANCE:</b>	<b>50m-ohms max. initial @ 2-4VDC, 100mA</b>
	<b>INSULATION RESISTANCE:</b>	<b>Apply 500VDC for 1min±5sec. After which measurement to be made b/w terminals shall result 1000M-ohms min.</b>
	<b>DIELECTRICAL STRENGTH:</b>	<b>1,000VAC (50Hz-60Hz) RMS @ sea level shall result no damage to parts arcing or flashover</b>
	<b>OPERATING TEMPERATURE:</b>	<b>-30Celsius degree to +85Celsius degree</b>
<b>RELIABILITY PERFORMANCE</b>	<b>MECHANICAL LIFE:</b>	<b>Without load, 1,000,000 cycles min</b>
	<b>OPERATING FORCE:</b>	<b>2N~5N max</b>
	<b>TORQUE</b>	<b>0.5 Nm max. (applied to nut)</b>
	<b>IP PROTECTION CLASS:</b>	<b>IP67( Upper side : Protected against the effects of temporary immersion in water.)</b>



	<b>SOLDERING HEAT RESISTANCE:</b>	<b>Max soldering temperature @ 260±5Celsius degree, immersion time 5±1sec</b>
	<b>COLD TEST:</b>	<b>Stored at temperature -30(+/-3)Celsius degree for 96 hours, shall result no changes to switch's electrical performance</b>
	<b>HOT TEST:</b>	<b>Stored at temperature +85(+/-3)Celsius degree for 96 hours, shall result no changes to switch's electrical performance</b>
	<b>HUMIDITY TEST:</b>	<b>Stored at temperature 40(+/-2)Celsius degree with relative humidity 90%~95% for 96 hours, shall result no changes to switch's electrical performance</b>
<b>MATERIAL CHARACTERISTICS</b>	<b>CASE</b>	<b>DAP</b>
	<b>CAP 、 BUSHING</b>	<b>Polyamide 6/6</b>
	<b>CONTACT 、 TERMINAL</b>	<b>Gold over silver plated</b>
<b>SOLDERING &amp; CLEANING RECOMMENDATION</b>	<b>HAND SOLDERING:</b>	<b>Max. temperature @ 350Celsius degree with continuous soldering time @ 5sec. max.</b>
	<b>CLEANING PROCESS:</b>	<b>Noted, the switch is "not totally sealed" so it is important not to immerse/spray or clean unsealed areas of the switch during flux removal. Improper cleaning could cause switch deficiencies such as intermittence or open contact failures</b>
<b>PACKAGE</b>	<b>INTERNAL PACKAGING:</b>	<b>25pcs per tray</b>
	<b>RoHS IDENTIFI-CATIONS:</b>	<b>A label marking "RoHS compliant" will be attached to the carton box.</b>

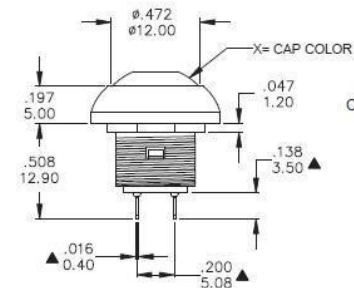
**LED Electro-Optical Characteristics:**



Model No.	Lens Appearance	Color	Electro-potical Data (AT 20mA)				Peak Wavelength	Viewing Angle 2θ 1/2 (deg)	
			Vf (V)		Iv (mcd)				
			Typ.	Max.	Typ.	Min.			
PAS6 & PAS7	Water Clear	Super White	2.8	3.3	200	100	X / Y=0.27	35°	
		Super Red	2.0	2.5	700	200	645		
		Yellow	2.1	2.6	100	55	589		
		Green	2.2	2.7	130	70	565		
		Super Blue	3.1	3.6	580	250	460		
		Super Yellow ( Super Green )	Y	2	2.6	475	210		590
			G	2	2.6	210	140		570
		Super Yellow ( Super Blue )	Y	2.1	2.6	200	94		590
			B	3.2	3.6	200	94		460
		Super Yellow ( Super Red )	Y	2.1	2.6	100	63		590
			R	2	2.6	90	42		630
		Super Red ( Super Green )	R	2	2.6	90	42		630
			G	2.0	2.6	90	42		570
		Super Red ( Super Blue )	R	2	2.6	90	42		630
B	3.2		3.6	200	94	460			
Super Green ( Super Blue )	G	2.0	2.6	100	42	570			
	B	3.2	3.6	200	94	460			

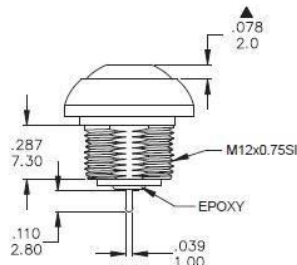
**RS P/N**

820-7583	on-mom, square bushing, solder lug, black cap
820-7587	on-mom, round bushing, solder lug, red cap
820-7593	Off-mom, round bushing, PC thru-hole, green cap
820-7596	Off-mom, round bushing, PC thru-hole, black cap
820-7599	Off-mom, round bushing, PC thru-hole, red cap
820-7603	Off-mom, round bushing, PC thru-hole, orange cap
820-7606	Off-mom, round bushing, PC thru-hole, blue cap
820-7559	Off-mom, square bushing, PC thru-hole, black cap
820-7561	Off-mom, square bushing, PC thru-hole, green cap
820-7565	Off-mom, square bushing, PC thru-hole, blue cap
820-7568	Off-mom, square bushing, PC thru-hole, red cap
820-7571	Off-mom, square bushing, solder lug, green cap
820-7574	Off-mom, square bushing, solder lug, black cap
820-7577	Off-mom, square bushing, solder lug, red cap
820-7580	Off-mom, square bushing, solder, blue cap



CESX-5  
X=CAP COLOR

1	White
2	Black
3	Red
4	Orange
5	Yellow
6	Green
7	Blue
8	Brown
9	Gray

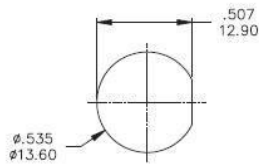
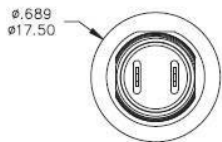


Model No.	POS.1	POS.2
PAS6	OFF	MOM
Term. Comm.	1-3	
SCHEMATIC	OPEN	

SWITCH FUNCTION

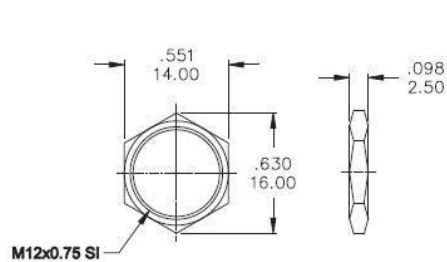
PART NO.	PART NAME	Q'TY	
1	MNU-PA03	M12x0.75 SI NUTS	1
2	MNU-1M09	LOCKING WASHER	1
3	MSU-PA01	RUBBER WASHER	1

FILE NAME: HARDWARE-0011

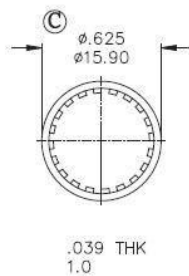


Panel cut-out

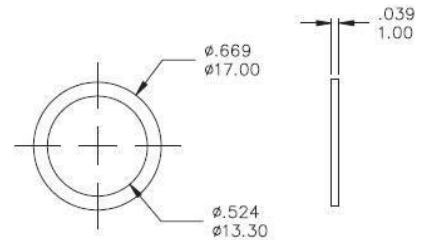
# HARDWARE



MNU-PA03



MNU-1M09



MSU-PA01

PART NO.	PART NAME	Q'TY	
1	MNU-PA03	M12x0.75 SI NUTS	1
2	MNU-1M09	LOCKING WASHER	1
3	MSU-PA01	RUBBER WASHER	1