

Datasheet

Fast Acting Glass Tube Fuse, 1A, 4.5x14.5mm

Stock No: 1778066

RS Pro



Specifications:

Materials

Tube (Body): Transparent glass tube. No breaking or deformation is allowed.

Two brass end caps: Made of brass of good conductivity.

Coating of brass caps: Plating the surface with nickel. If the indication is added with "S", it needs to be plated with silver.

Interrupting Ratings

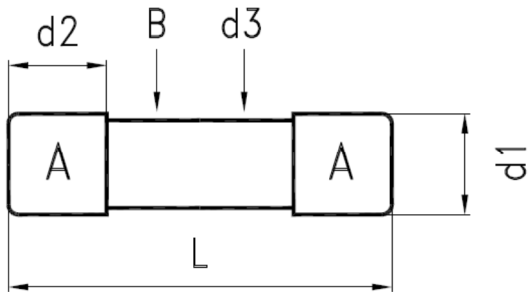
10mA~3.5A: 10,000 amperes at 125V AC

10mA~1A: 35 amperes at 250V AC

Operating Temperature

-55°C to +125°C

Drawing (mm):



NO.	Part Name		Volume
A	Brass Cap	Nickel Plating	2
B	Glass Tube	Transparent Glass	1
d1	Dia. of Cap	4.60±0.1mm	
d2	Height of Cap	4.70±0.1mm	
d3	Dia. of Glass	4.00±0.2mm	
L	Body of Fuse	14.50±0.75mm	

Electrical Characteristic:

Rating	100% Rating		135% Rating		200% Rating	
	Min.	Max.	Min.	Max.	Min.	Max.
10mA~10A	4 Hrs			60 min		5 sec

Approvals	Mark	Nominal Resistance
		Cold Ohms
1	A	0.1263