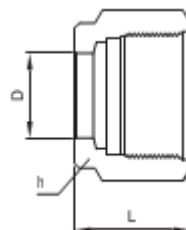


**Nut
AN**

Fractional

Part No.	Tube O.D.		With across at		L
	D		h		
	in	mm	in	mm	
AN-1	1/16	1.59	5/16	7.93	7.90
AN-2	1/8	3.17	7/16	11.11	11.93
AN-3	3/16	4.76	1/2	12.70	11.93
AN-4	1/4	6.35	9/16	14.28	12.70
AN-5	5/16	7.93	5/8	15.87	13.46
AN-6	3/8	9.52	11/16	17.46	14.22
AN-8	1/2	12.70	7/8	22.22	17.52
AN-10	5/8	15.87	1	25.40	17.52
AN-12	3/4	19.05	1-1/8	28.57	17.52
AN-14	7/8	22.22	1-1/4	31.75	17.52
AN-16	1	25.40	1-1/2	38.10	20.57
AN-20	1-1/4	31.75	1-7/8	47.63	31.75
AN-24	1-1/2	38.10	2-1/4	57.15	38.10
AN-32	2	50.80	3	76.20	52.32

Metric

Part No.	Tube O.D.	With across at	L
	D	h	
AN-2M	2	12	11.90
AN-3M	3	12	11.90
AN-4M	4	12	11.90
AN-6M	6	14	12.70
AN-8M	8	16	13.50
AN-10M	10	19	15.10
AN-12M	12	22	17.40
AN-15M	15	25	17.40
AN-16M	16	25	17.40
AN-18M	18	30	17.40
AN-20M	20	32	17.40
AN-22M	22	32	17.40
AN-25M	25	38	20.60
AN-28M	28	46	30.60
AN-32M	32	50	34.40
AN-38M	38	60	40.60