

Datasheet

ENGLISH

RS Pro Ceramic Tube Fuse, 50-180A, 17.4 x 42 mm

Stock No:1884501,1884502,1884503,1884504,1884505,1884507,
1884508,1884509,1884627,1884634,1884642,1884648,
1884654,1884661,1884668,1884604



Specifications:

Materials

Tube (Body): Non-transparent ceramic tube. Breaking or deformation is not allowed.

Two copper end caps: Made of copper of good conductivity.

Coating of caps: Plating the surface with Tin . If the indication is added with "S", it needs to be plated with silver.

Interrupting Ratings

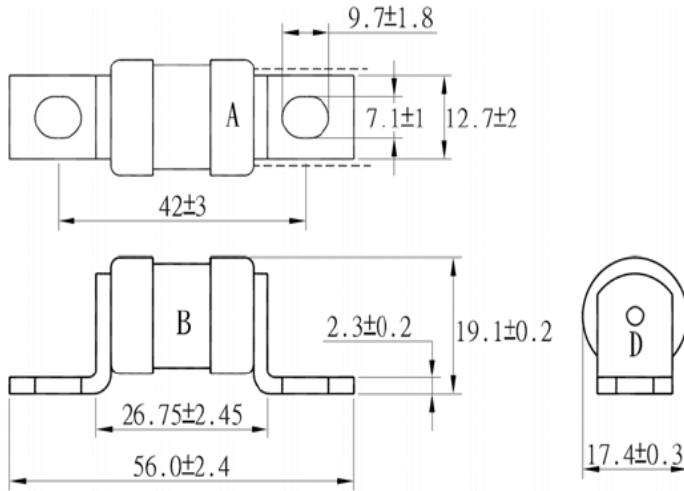
160,000 amperes at 240V AC

50,000 amperes at 150V DC

Operating Temperature

-55°C to +125°C

Drawing (mm):



unit : mm

NO.	Part Name		Volume
A	Copper Cap	Tin Plated	2
B	Ceramic Tube	Non-Transparent Ceramic Tube	1
D	Terminal	Copper (Tin Plated Copper)	2

Electrical Characteristic:

Rated Current	Watts Loss
	100% In(W)
50A	8.8
60A	11
70A	12.5
80A	13.7
100A	16.2
125A	22
150A	25
180A	25

		Nominal Resistance	Clearing at 240V
		Cold Ohms	I ² t (A ² Sec)
50	A	0.00183	2463
60	A	0.00156	3574.3
70	A	0.00117	4047
80	A	0.00098	5447
100	A	0.00072	8352
125	A	0.0006	10077
150	A	0.00049	15100
180	A	0.00038	17268

Reference:

Stock No	Rating amperes
1884501	50A 240V
1884627	50A 240V
1884502	60A 240V
1884634	60A 240V
1884503	70A 240V
1884642	70A 240V
1884504	80A 240V
1884648	80A 240V
1884505	100A 240V
1884654	100A 240V
1884507	125A 240V
1884661	125A 240V
1884508	150A 240V
1884668	150A 240V
1884509	180A 240V
1884604	180A 240V