

# ED III SERIES

# SINGLE-PHASE AC120V or 240V(max)

- High speed lifting/lowering
- Compact design minimizes headroom
- Powerful and high performance
- High performance mechanical brake
- Overload protection
- Compact and lightweight. 100 kg type weighs just 11.5 kg standard lift.
- Mini Trolley expands application range.
- Enclosure: IP54(Hoist Body), IP65(Push Button Switch), IP44(Cylinder Switch)

## High strength, wear and rust resistant Nickel-plated Load Chain

### Specifications

Rated capacity:	60kg to 480kg
Voltage:	Single phase AC 120V or 240V (max) both for 50Hz and 60Hz
Control voltage:	Direct control is standard. Low voltage is available as an option.
Motor insulation:	Class F
Enclosure:	Single speed/Dual speed - IP54 Cylinder - IP44
Suspension varieties:	Hook, mini trolley, universal trolley
Operating temperature:	-20 to 40 °C (-4 to 104 °F)
Operating humidity:	85%RH or less
Voltage range available from	110 to 120V(max) or 220 to 240V(max)

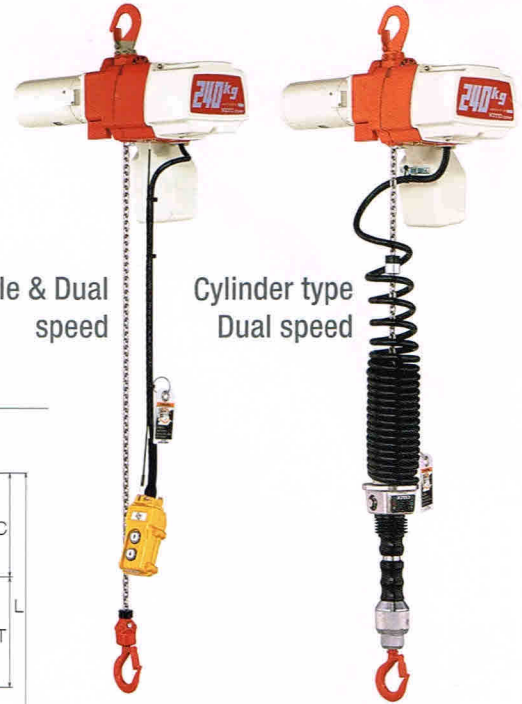
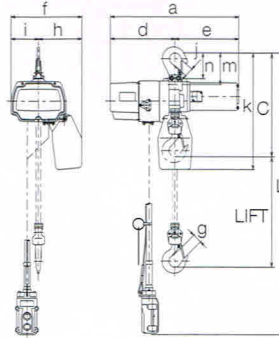
Increased safety  
(60kg to 480kg)



Upper limit switch

Chain spring (Option)

### 60kg to 240kg



## 60kg to 240kg

Power supply		120V or 240V 50Hz/60Hz															
		Single speed type					Dual speed type					Cylinder type					
Type		ED06S	ED10S	ED18S	ED16S	ED24S	ED06ST	ED10ST	ED18ST	ED16ST	ED24ST	EDC06SD	EDC10SD	EDC18SD	EDC16SD	EDC24SD	
Product code		ED06S	ED10S	ED18S	ED16S	ED24S	ED06ST	ED10ST	ED18ST	ED16ST	ED24ST	EDC06SD	EDC10SD	EDC18SD	EDC16SD	EDC24SD	
Rated load (W.L.L.)	(kg)	60	100	180	160	240	60	100	180	160	240	60	100	180	160	240	
Motor output	(W)	300			600		300		600		300		600				
Short time rating	(min)	15(20)*1		10(15)*1	20		15(20)*1		10(15)*1		20		15(20)*1		10(15)*1		
Intermittent rating	%ED	30		20	30		30		20		30		30		20		
	Max.number of starts per hour	180		120	180		180		120		180		180		120		
Rated current	(A)	5		6	10		5		6		10		5		6		
	240V	3			5		3		5		3		5		3		
Lifting speed	(m/min)	21		13	8		20		13.5		21		13		8		
	Low	-		-	-		4		3		4		3		4		
Standard lift	(m)	-		-	3		-		3		-		1.8		-		
Push button cord length	L(m)	-		2.5	-		-		2.5		-		-		-		
Load chain diameter	(mm)	-		4	-		-		4		-		4		-		
Mass [net weight]	(kg)	11.5 (12)*2			15.5 (16)*2		12 (12.5)*2		16 (16.5)*2		14.5 (15)*2		18.5(19)*2				
Dimensions	C (mm)	315			330		315		330		945		960				
		a	371 (364)*1			428		371 (364)*1		428		371 (364)*1		428			
		d	187			205		187		205		187		205			
		e	184 (177)*1			223		184 (177)*1		223		184 (177)*1		223			
		f	205			219		205		219		205		219			
		h	125			135		125		135		125		135			
		i	80			84		80		84		80		84			
		g			25			25				25					
		j			25			25				25					
		k	340			362		340		362		340		362			
		m			92			92				92					
		n			73			73				73					

- Control: Direct control is standard. Low voltage is available upon request. • Power supply cable: 2mm<sup>2</sup> x 3 conductors x 5m with grounding wire.
- The lifting speed is the average of the lifting / lowering speed under the rated load. The speed will vary in a load or voltage.
- W.L.L.: Indicates maximum load (working load limit) which a hoist is designed to support in general service.
- In case of with mini trolley, dimensions "C" and "k" are shorter by 45mm.
- \*1: Figures in parentheses show the data for 240V(max). • \*2: Mass in parentheses are at Low voltage control 27V.