

Features

- Brushed Gear motor
- 47:1 reduction ratio
- 35mm diameter
- Anticlockwise rotation
- Heavy duty construction

RS PRO Brushed DC Geared Motor

RS Stock No.: 413-0593



RS PRO Professionally Approved Products bring to you professional quality parts across all product categories. Our product range has been tested by engineers and provides a comparable quality to the leading brands without paying a premium price.

Product Description

The RS PRO Brushed Gear Motor – A high quality and robust 3 pole brushed gear motor with a power rating of 1.71 W designed for model and light duty applications. The brushed gear motor features a voltage rating of 1.5 to 3 V dc for compatibility with a range of power sources. Reliable and tough the DC motor features a heavy duty robust metal housing and Sintered Bronze bearings for a hardwearing and powerful motor mounted on a strong 1mm Steel plate bracket.

General Specifications

| | |
|-----------------------|----------|
| Output Speed | 293 rpm |
| Maximum Output Torque | 390 g.cm |
| DC Motor Type | Brushed |
| Shaft Diameter | 4mm |
| Gearhead Type | Spur |
| Length | 51mm |
| Width | 27mm |
| Weight | 75g |

Electrical Specifications

| | |
|----------------|--------|
| Power Rating | 1.71 W |
| Current Rating | 1.06A |
| Supply Voltage | 3 V dc |

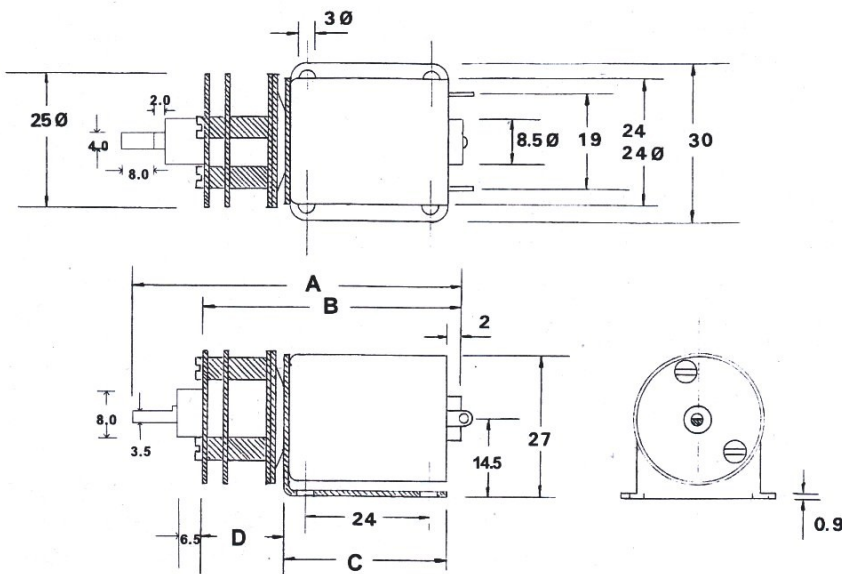
Further Specifications

| | |
|--------------------------------|-----------------|
| Gearbox Housing material | Metal |
| Backlash at no-load | < 2° |
| Bearing at output | Sleeve bearings |
| Radial load (10mm from flange) | < 0.3 kgf |
| Shaft axial load | < 0.2 kgf |
| Shaft press fit force max | < 2 kgf |
| Radial play of shaft | < 0.05mm |
| Thrust play of shaft | < 0.35mm |

| Reduction Ratio | Rated tolerance Torque | Max momentary Tolerance Torque | Efficiency |
|-----------------|------------------------|--------------------------------|------------|
| 1/30 | 0.6 kgf-cm Max. | 1.8 kgf-cm | 65% |

| Reduction Table RPM | 1.5v | 3v |
|---------------------|------|-----|
| SUPPLY VOLTAGE | | |
| 413-0593 | 147 | 293 |

Note: Motor speeds may vary by (+) or (-) 12.5%



Operating relative humidity 20% ~ 85%
 Operating temperature range -10°C ~ +60°C

| Ratio | A | B | C | D |
|-------|--------|--------|--------|--------|
| 30:1 | 67.5mm | 51.3mm | 33.5mm | 17.8mm |