

DT-AR-050-8D

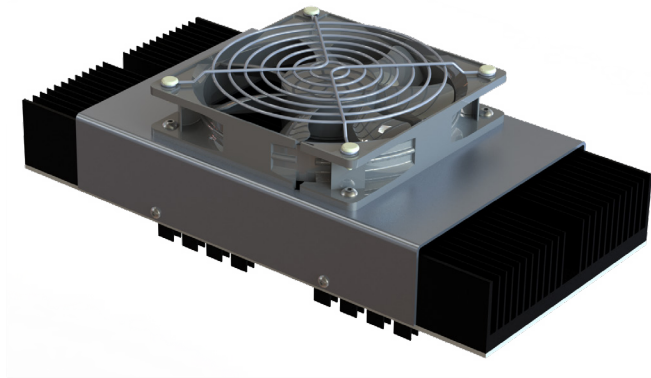
Thermoelectric assembly, air to air, 12Vdc, 50 watts, no cold fan

Features

Intricate control over temperature,
Compact design, DC operation

Applications

Electronics' cabinets, Medical instrumentation, Analytical diagnostics, Industrial automation, Food and beverage cooling, Laser systems' cooling.



Physical Properties	Value
Max cooling power (W)	52.5
Nominal voltage (V)	18
Nominal current (A)	5
Power input (W)	75
Dimensions (mm)	276 x 133 x 97.5
Weight (kg)	1.4
Fan speed (RPM)	2200
Noise (DbA)	36
NTC sensor included	No

DT-AR-050-8D

Thermoelectric assembly, air to air, 12Vdc, 50 watts, no cold fan

