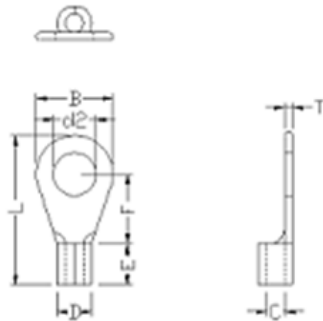


# Datasheet

## Uninsulated Crimp Ring Terminal, 16 → 14 AWG, M8

RS Stock number [208-2587](#)



Insulation Colour	Wire Range Mm <sup>2</sup> /Awg	Stud Size	d2 (mm)	W (mm)	F (mm)	L (mm)	E (mm)	D (mm)	d1 (mm)	T (mm)
Blue	1.5-2.5mm <sup>2</sup> /16-14AWG	5/16	8.4	12.6	11.0	26.7	10.0	4.5	2.3	0.8

### Specifications:

**1. Maximum Electric Current:**

22-16AWG / 0.5-1.5mm<sup>2</sup>: 19A

16-14AWG / 1.5-2.5mm<sup>2</sup>: 27A

12-10AWG / 4-6mm<sup>2</sup>: 48A

**2. Terminal Body: Copper**

**3. Insulation:**

**4. Plating: Tin**

NBT—Non-Insulated butted seam

NB—Non-insulated brazed seam