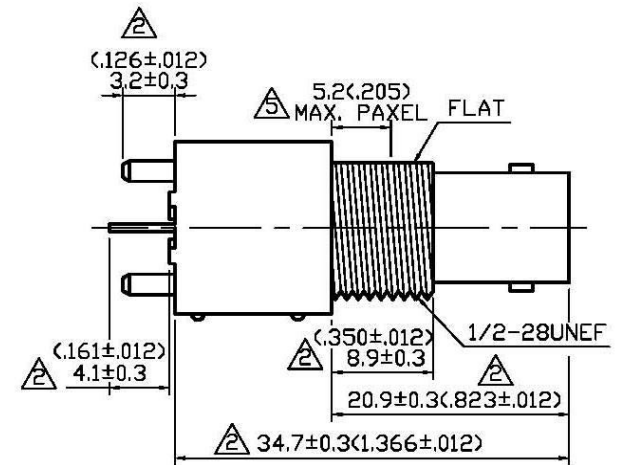
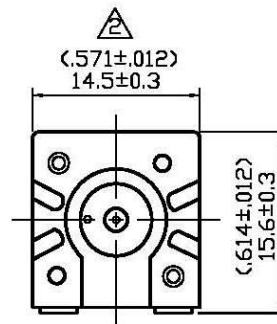
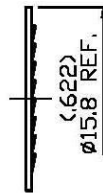
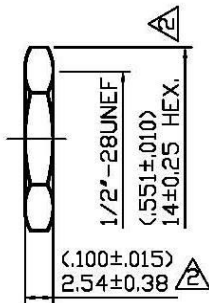


NO	DESCRIPTION	DATE
①	MODIFICATION PCB CONFIGURATION	12.26.05'
②	PCB CONFIGURATION -- RECOMMEND PCB LAYOUT 2.5 → 2.54±0.38 14.0 HEX. → 14±0.25 HEX. 14.5 REF. → 14.5±0.3 DEL 8.6 REF. ; 5.08 ADD 3.2±0.3 ; 10.16 4.1±0.5 → 4.1±0.3 34.8 REF. → 34.7±0.3 20.8 REF. → 20.9±0.3 8.6 REF. → 8.9±0.3 ; ϕ 2.1X2 → ϕ 2.00X2 ϕ 0.9X2 → ϕ 0.90X2 ; 12.0 REF. → 11.7 ϕ 12.9 REF. → ϕ 12.83 BACKGROUND FORMAT UPDATED BODY I → HOUSING ; BODY II → BODY MODIFICATION MATERIAL	04.21.09'
③	MODIFY APPEARANCE OF ②	06.30.09'
④	ADD (P/N:5465109)	03.24.11'
⑤	ADD 5.2 MAX. PANEL	09.01.15'



SPECIFICATIONS:

MECHANICAL CHARACTERISTICS:

MATING/UNMATING--500 CYCLES

ELECTRICAL CHARACTERISTICS:

NORMAL IMPEDANCE-- 75 OHMS

FREQUENCY RANGE-- 0-1 GHz

TESTING VOLTAGE-- 500 VOLTS RMS

DIELECTRIC WITHSTANDING VOLTAGE-- 1500 VOLTS RMS

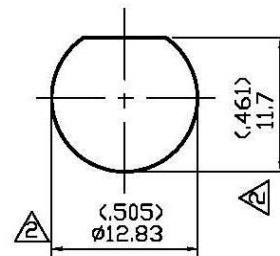
INSULATION RESISTANCE-- 5000 MEGOHMS MIN.

ENVIRONMENTAL CHARACTERISTICS:

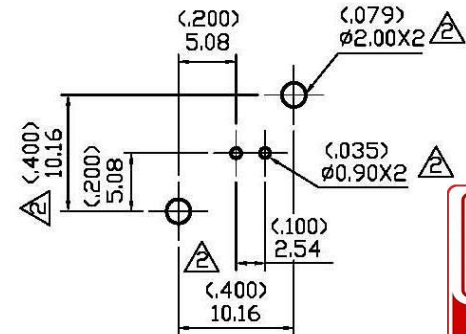
TEMPERATURE RANGE-- -40° C TO +60° C

THERMAL SHOCK-- MIL-STD-202,METHOD 107,COND.B.

PHYSICAL SHOCK-- MIL-STD-202,METHOD 204,COND.B.



MOUNTING HOLE



RECOMMENDED PCB LAYOUT (P/N:5465109)



8	LOCK WASHER	S50C	1	NICKEL
7	NUT	BRASS	1	NICKEL
6	CENTER CONTACT	PHOSPHOR BRONZE WITH GOLD PLATING AT CONTACT AREA TIN PLATING AT TAIL	1	GOLD TIN
5	INSULATION	POLYPROPYLENE UL 94HB	1	NONE
4	SOLDER PIN	COPPER WIRE	1	TIN
3	BODY	ZINC ALLOY	1	NICKEL
2	HOUSING	PBT+30% G.F (UL 94 V-0)	1	NONE
1	MOUNTING POST	BRASS	2	TIN
NO	DESCRIPTION	MATERIAL	Q'TY	FINISH

APPROVED by _____ DATE: _____

DESCRIPTION		BNC STRAIGHT PCB MOUNT JACK RECEPTACLE(VALDX HOUSING)							
製圖	DRAWN	TOLERANCE	品名	13-60-1	D.G.Z	日期	DATE	版次	REV.
	Yoko		TITLE	\ROHS COMPLIANT <75Ω>	05.18.99'	B-5			
檢圖	CHECK	.X	±0.2	單位	UNIT	DWG.NO.	13-0266	SCALE	比例
	Arc	.XX	±0.1						
認定	APPROVAL	.XXX	±0.05	2:1					
	Angela	ANGLE	±5°						