



Datasheet

RS PRO Two-Part Enclosures For Wall Mounting

Stock number: 2006697

EN



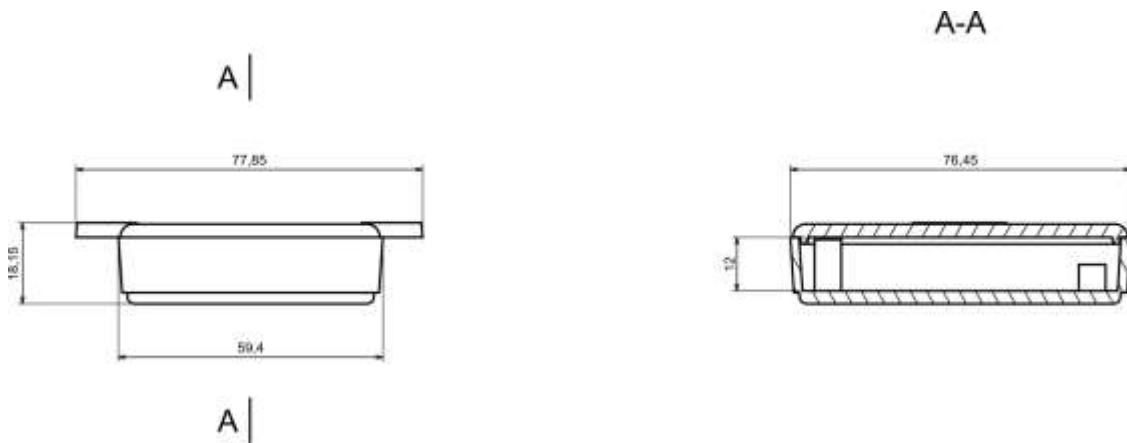
Product Details

Two-part enclosure is made of light gray ABS. The enclosure provides IP53 it is ideal for applications that doesn't require hermetic seal, it can be mounted on walls and other surfaces using mounting ears.

Features and Benefits

- Made of ABS
- Available in light gray color
- Protection against liquids and solid objects: IP53 rating
- Lugs for wall mounting

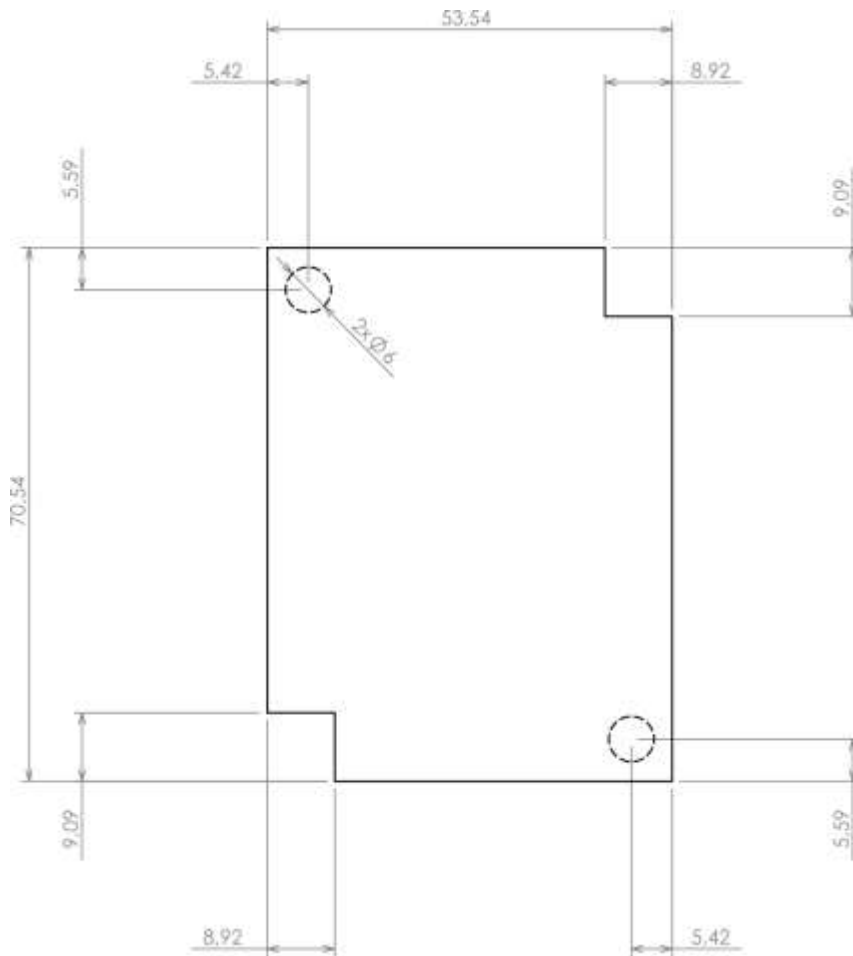
rspro.com



| | |
|--------------------|------------------------------|
| Category | Enclosures For Wall Mounting |
| Type | Full with lug (U) |
| Material | ABS |
| Variant | Without gasket |
| Height | 18.1 mm |
| Width | 59.4 mm |
| Length | 76.5 mm |
| Color | Light gray |
| Protection level | IP53 |
| Standards Met | RoHS Compliant |
| Accessories | Screw 3/13: 2.0 pcs |
| Certificate number | CE/032/18 |



Max PCB size



Dashed line shows outline of the mounting boss under PCB board
Recommended mounting holes diameter $\varnothing 3,5$ mm