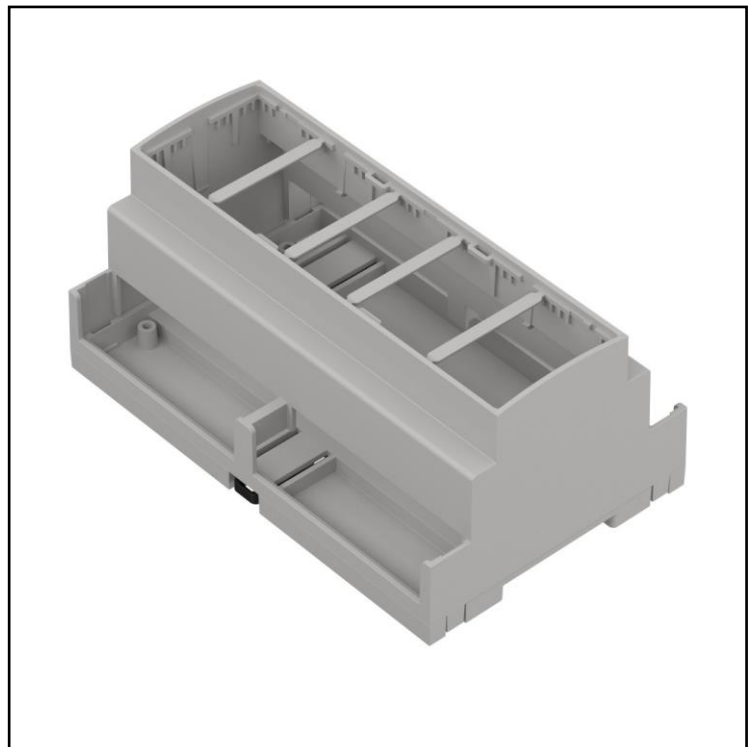


## Features

- Made of ABS V0
- Available in lightgray colour
- Supplied with three latches
- Different slot masks and filters
- Assembled without screws

## RS PRO DIN Rail Enclosures

RS Stock No.: 238-3979



RS PRO Professionally Approved Products bring to you professional quality parts across all product categories. Our product range has been tested by engineers and provides a comparable quality to the leading brands without paying a premium price.

## Product Description

*Made of self-extinguishing ABS V0, customizable eight module DIN enclosure. It can be modify by different slot masks and filters, ribs inside give a flexible solution for PCB installation. Mounted to TS35 rail by three latches thanks to this solution there are no technological holes between the PCB plate and the rail. The casing is assembled without screw.*

## General Specifications

Material	ABS V0
Colour	Lightgray
Applications	Modular Enclosures for DIN Rail
Mounting	DIN Rail
Optional accessories	Slot mask - full 2383983: 4.0 pcs Slot mask for sockets 2383984: 4.0 pcs Slot mask - universal 2383985: 4.0 pcs Slot mask for end plugs 2383982: 4.0 pcs Filter 2383988 (Lightgray): 1.0 pcs Filter 2383986 (Red): 1.0 pcs Filter 2383990 (Transparent): 1.0 pcs

## Mechanical Specifications

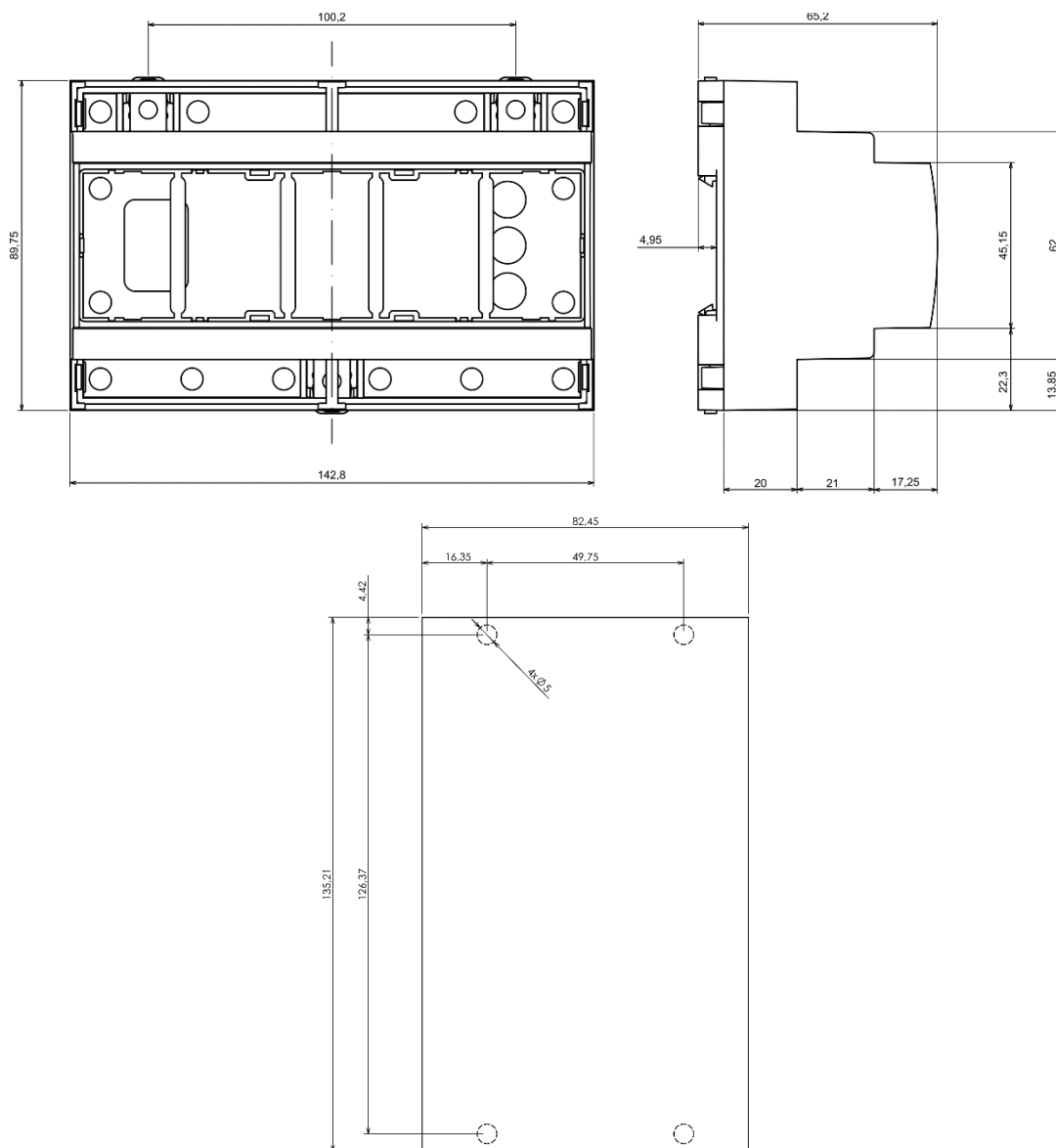
Height	65.2 mm
Width	89.8 mm
Length	142.8 mm
Gasket	No

## Approvals

Standards Met	RoHS Compliant
---------------	----------------

## Similar Products

Stock No.	Brand	Product Name	Length
238-3980	RS PRO	Enclosure for DIN Rail	12 Modules
206-9061	RS PRO	Enclosure for DIN Rail	10 Modules
194-7598	RS PRO	Enclosure for DIN Rail	8 Modules



Dashed line shows outline of the mounting boss under PCB board  
 Recommended mounting holes diameter  $\varnothing 3.5$  mm  
 All dimensions are given within  $\pm 0.5$ mm tolerance