

# PrimaVision Mini for CDM

## HID-PV m 20 /S CDM 220-240V 50/60Hz

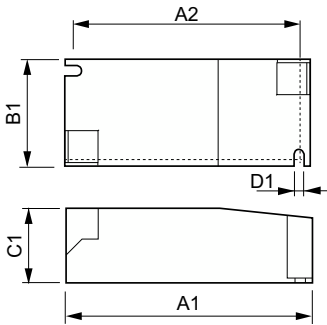
Miniature HID electronic gear for PGJ5 CDM lamps – freeing up the boundaries of creativity and innovation in luminaire design

### Product data

| Operating and Electrical                     |                 | Mechanical and Housing          |   |
|--|-----------------|---------------------------------|---|
| Input Voltage                                | 220 to 240 V    | Housing                         | /S  |
| Line Frequency                               | 50 to 60 Hz     |                                 |   |
| Input Frequency                              | 50 to 60 Hz     | Approval and Application        |   |
| Earth Leakage Current (Max)                  | 0.5 mA          | Approval Marks                  | CE marking ENEC certificate VDE certificate |
| Inrush Current Width                         | 0.25 ms         |                                 |   |
| Inrush Current Peak (Max)                    | 15 A            | Product Data                    |   |
| Number of Products on MCB (16A Type B) (Nom) | 32              | Order product name              | HID-PV m 20 /S CDM 220-240V 50/60Hz         |
|  |                 | Full product name               | HID-PV m 20 /S CDM 220-240V 50/60Hz         |
|  |                 | Full product code               | 871829167159600                             |
|  |                 | Order code                      | 913700696066                                |
|  |                 | Material Nr. (12NC)             | 913700696066                                |
|  |                 | Numerator - Quantity Per Pack   | 1   |
|  |                 | EAN/UPC - Product/Case          | 8718291671596                               |
|  |                 | Numerator - Packs per outer box | 12  |
|  |                 | EAN/UPC - Case                  | 8718291671602                               |
| Wiring                                       |                 |                                 |   |
| Cable Length From Device to Lamp             | 0.5 m           |                                 |   |
| Connector Type                               | Insert          |                                 |   |
| Temperature                                  |                 |                                 |   |
| Ambient temperature range                    | -20 °C to 55 °C |                                 |   |
| T-Case Lifetime (Nom)                        | 80 °C           |                                 |   |
| T-Case Maximum (Max)                         | 80 °C           |                                 |   |

# PrimaVision Mini for CDM

## Dimensional drawing



| Product                                | D1     | C1      | A1      | A2      | B1      |
|--|--------|---------|---------|---------|---------|
| HID-PV m 20 /S CDM 220-240V<br>50/60Hz | 4.2 mm | 30.2 mm | 97.3 mm | 88.3 mm | 43.3 mm |

