

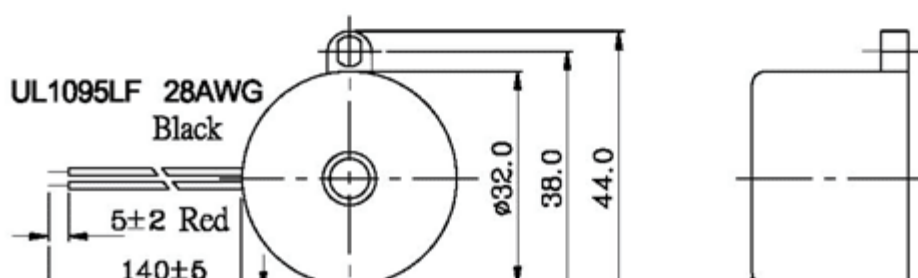
Shape

KPEG280



Model Number	KPEG280
Frequency Range (Hz)	2,500 ~ 3,800
Operating Voltage Range (VDC)	6 ~ 18
Current Consumption (mA)	Max. 17@12VDC
Sound Pressure Level (dB)	Min. 88dB@30cm / 12VDC
Tone	High / Low
Operating Temperature (°C)	--20 ~ +60
Storage Temperature (°C)	-30 ~ +70
Weight (Gram)	13.2
Material	ABS UL-94 1/16" HB (Black)

Dimension



The specification is for reference only. Please confirm the detailed approval sheets before ordering with us.
Kingstate reserves the right to revise or withdraw specifications without advanced notice.