

Fellowes

Powershred® 125Ci/125i The World's Toughest Shredders®



Please read these instructions before use.
Do not discard: keep for future reference.

Lire ces instructions avant utilisation.
Ne pas jeter : conserver pour référence ultérieure.

Lea estas instrucciones antes de usarlo.
No las deseche: guárdelas para tenerlas como referencia.

Diese Anleitungen vor Gebrauch genau durchlesen.
Bitte nicht entsorgen: Zur späteren Bezugnahme aufheben.

Prima dell'uso, si raccomanda di leggere questo manuale di istruzioni.
Conservare il manuale per consultarlo secondo le necessità.

Lees deze instructies voor gebruik.
Gooi ze niet weg, maar bewaar ze zodat u ze later kunt raadplegen.

Läs dessa anvisningar innan du använder apparaten.
Släng inte bort, behåll för framtida bruk.

Læs venligst denne vejledning før anvendelse.
Bør ikke bortskaffes. Behold for fremtidig henvisning.

Łue nämä ohjeet ennen käyttöä.
Älä hävitä: säilytä myöhempää käyttöä varten.

Vennligst les nøye igjennom denne bruksanvisningen før bruk.
Ikke kast den: Ta vare på den for senere referanse.

Przed użyciem proszę zapoznać się z tą instrukcją.
Nie wyrzucać - zachować jako źródło informacji na przyszłość

Перед началом эксплуатации обязательно прочтите данную инструкцию.
Не выбрасывайте данную инструкцию: сохраните ее для последующего использования.

Παρακαλείσθε να διαβάσετε αυτές τις οδηγίες πριν χρησιμοποιήσετε το προϊόν.
Μην τις απορρίψετε: κρατήστε τις για μελλοντική αναφορά.

Kullanmadan önce lütfen bu talimatları okuyun.
Atmayın: ileride başvurmak üzere saklayın.

Před použitím si přečtěte tyto pokyny.
Nelíkvídujte: uschovejte pro budoucí použití.

Pred použitím si prečítajte tieto pokyny.
Nezahadzujte: odložte pre budúce použitie.

Kérjük, hogy használat előtt olvassa el az utasításokat!
Az utasításokat ne dobja ki; tartsa meg referenciaanyagként való jövőbeni használatra.

Leia estas instruções antes da utilização.
Não as deite fora: conserve-as para consulta futura.

يرجى الاطلاع على الإرشادات قبل الاستعمال.
لا يجب التخلص من هذه الإرشادات. ويرجى حفظها للرجوع إليها في المستقبل.

נא לקרוא הוראות אלה לפני השימוש.
אין להשליך: שמרו לעיונכם בעתיד.



KEY

- | | | |
|-------------------------------|-------------------------------------|----------------|
| A. SafeSense® Technology | H. Control Panel and LEDs | I. Casters (2) |
| B. Paper entry | ◀◀ 1. Reverse | |
| C. CD/Credit card safety flap | ⏻ 2. ON/OFF | |
| D. Door | ▶ 3. Forward | |
| E. Basket | 4. Auto | |
| F. Disconnect power switch | ⚡ 5. Overheat (red) | |
| ○ 1. OFF | 🚪 6. Door open (red) | |
| I 2. ON | 🗑️ 7. Bin full (red) | |
| G. See safety instructions | 🏠 8. Remove paper (red) | |
| | 🛡️ 9. SafeSense® indicator (yellow) | |

CAPABILITIES

Will shred: Paper, plastic credit cards, CD/DVD, small paper clips and junk mail

Will not shred: Adhesive labels, continuous form paper, transparencies, newspaper, cardboard, large paper clips, folders, X-rays or plastic other than noted above

Paper shred size:

Cross-Cut (125Ci)	4mm x 38mm
Strip Cut (125i)	5.8mm

Maximum:

Sheets per pass, 80g paper (Cross-cut).....	20*
Sheets per pass, 70g paper (Cross-cut).....	22*
Sheets per pass, 80g paper (Strip-cut).....	16*
Sheets per pass, 70g paper (Strip-cut).....	18*
CDs/Cards per pass	1*
Paper entry width.....	230mm

*A4, paper at 220-240V, 50/60 Hz, 125Ci 4Amps, 125i 3.5Amps; heavier paper, humidity or other than rated voltage may reduce capacity. Maximum recommended daily usage rates: 3,300 (125Ci)/3,000 (125i) sheets; 100 cards; 10 CDs.

Fellowes SafeSense® shredders are designed to be operated in office environments ranging between 50 – 80 degrees Fahrenheit (10 – 26 degrees Celsius) and 40 – 80% relative humidity.

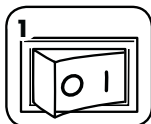
⚠️ WARNING: IMPORTANT SAFETY INSTRUCTIONS — Read Before Using!

- Operation, maintenance, and service requirements are covered in the instruction manual. Read the entire instruction manual before operating shredders.
- Keep away from children and pets. Keep hands away from paper entry. Always set to off or unplug when not in use.
- Keep foreign objects – gloves, jewelry, clothing, hair, etc. – away from shredder openings. If object enters top opening, switch to Reverse (◀◀) to back out object.
- DO NOT use aerosol products, petroleum based or aerosol lubricants on or near shredder. DO NOT USE “CANNED AIR” OR “AIR DUSTERS” ON SHREDDER. Vapors from propellants and petroleum based lubricants may combust causing serious injury.
- Do not use if damaged or defective. Do not disassemble shredder. Do not place near or over heat source or water.

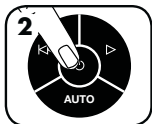
- This shredder has a Disconnect Power Switch (F) that must be in the ON (I) position to operate shredder. In case of an emergency move switch to OFF (○) position. This action will stop shredder immediately.
- Avoid touching exposed cutting blades under shredder head.
- Use only designated entry for CDs/cards. Keep fingers away from CD entry.
- Do not put foreign objects in paper entry.
- Shredder must be plugged into a properly grounded wall outlet or socket of the voltage and amperage designated on the label. The grounded outlet or socket must be installed near the equipment and easily accessible. Energy converters, transformers, or extension cords should not be used with this product.
- FIRE HAZARD – Do NOT shred greeting cards with sound chips or batteries.
- For indoor use only.
- Unplug shredder before cleaning or servicing.

BASIC SHREDDING OPERATION

PAPER/CARD OR CD



Plug in and put disconnect power switch in ON (I) position



Press (C) ON to activate



Feed paper/card straight into paper entry and release



To shred CDs or credit card, rotate safety flap into place



Hold CD/card at edge, and feed into center of entry and release



When finished shredding set to OFF (O)



Do nothing and shredder will go automatically to sleep mode after 2 minutes of inactivity

ADVANCED PRODUCT FEATURES



100% JAM PROOF

Jam Proof System
Eliminates paper jams and powers through tough jobs



SAFESENSE TECHNOLOGY

Patented SafeSense® Technology
Stops shredding immediately when hands touch the paper entry



ENERGY SAVINGS SYSTEM™

Energy Savings System
Optimal energy efficiency 100% of the time – in use and out of use.



100% JAM PROOF

JAM PROOF SYSTEM OPERATION*

Eliminates paper jams and powers through tough jobs.

① Advanced Jam Prevention- Electronically measures paper thickness to prevent paper jams:



Up to RED: Too many sheets have been inserted.

Up to YELLOW: Productivity is optimized.

Up to GREEN: More sheets can be added.

If a misfeed occurs:

All indicators light up and shredder pauses for 3-6 seconds

② Remove several sheets until indicator is below red.

Wait for flashing to stop after automatic correction is complete. Regular shredding will resume.

③

Continue 100% Jam Proof Shredding

If illuminates after paper has been reversed, press reverse and remove paper. Otherwise, regular shredding will resume.

*100% Jam Proof when used in accordance with user manual



SAFESENSE TECHNOLOGY

SAFESENSE® TECHNOLOGY OPERATION

Stops shredding immediately when hands touch the paper opening.

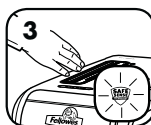
SET-UP AND TESTING



Turn the shredder ON (C) to activate SafeSense®



Touch test area and look for the SafeSense® indicator to illuminate



SafeSense® is active and working properly



If hand is held on SafeSense® area more than 3 seconds shredder will shut off



ENERGY SAVINGS SYSTEM™

ENERGY SAVINGS SYSTEM

Optimal energy efficiency 100% of the time – in use and out of use.

- Saves energy in four ways: energy-efficient electronics, jam prevention, standby mode and sleep mode.
- Sleep Mode shuts down shredder after 2 minutes of inactivity.

WHEN IN SLEEP MODE



In sleep mode



To get out of sleep mode touch control panel



insert paper

For more information about all of Fellowes Advanced Product Features go to www.fellowes.com

PRODUCT MAINTENANCE

CLEANING AUTO-START INFRARED SENSORS

Paper detection sensors are designed for maintenance free operation. However, on rare occasions the sensors may become blocked by paper dust causing the motor to run even if there is no paper present

(Note: two paper detection sensors are located in the center of the paper entry).

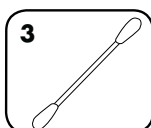
TO CLEAN THE SENSORS



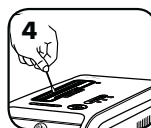
Turn off and unplug shredder



Locate Auto-start infrared sensor



Dip cotton swab in rubbing alcohol

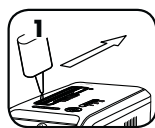


Using cotton swab, wipe away any contamination from the paper sensors

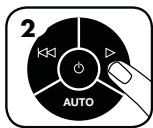
OILING SHREDDER

All cross-cut shredders require oil for peak performance. If not oiled, a machine may experience diminished sheet capacity, intrusive noise when shredding and could ultimately stop running. To avoid these problems, we recommend you oil your shredder each time you empty your waste bin.

FOLLOW OILING PROCEDURE BELOW AND REPEAT TWICE



*Apply oil across entry



Press and hold forward
(▶) 2-3 seconds

CAUTION *Only use a non-aerosol vegetable oil in long nozzle container such as Fellowes 35250 

TROUBLESHOOTING



Overheat Indicator: When the Overheat Indicator is illuminated, the shredder has exceeded its maximum operating temperature and needs to cool down. This indicator will remain illuminated and the shredder will not operate for the duration of the recovery time.



Bin Open: The shredder will not run if the bin is open. When illuminated, close the bin to resume shredding.



Bin Full: When illuminated, the shredder waste bin is full and needs to be emptied. Use Fellowes waste bag 36054.



Remove Paper: When illuminated, press reverse (◀◀) and remove paper. Reduce paper quantity to an acceptable amount and refeed into paper entry.



SafeSense® Indicator: If hands are too close to the paper entry, the SafeSense® indicator will illuminate and the shredder will stop shredding. If SafeSense® is active for 3 seconds, the shredder will automatically turn off and the user must press the power button on the control panel to resume shredding.

Self Cleaning Cycle: Shredder periodically cycles in forward and reverse lasting 3-6 seconds (125Ci only).

LIMITED PRODUCT WARRANTY

Limited Warranty: Fellowes, Inc. ("Fellowes") warrants the parts of the machine to be free of defects in material and workmanship and provides service and support for 2 years from the date of purchase by the original consumer. Fellowes warrants the cutting blades of the machine to be free from defects in material and workmanship for 20 years from the date of purchase by the original consumer. If any part is found to be defective during the warranty period, your sole and exclusive remedy will be repair or replacement, at Fellowes' option and expense, of the defective part. This warranty does not apply in cases of abuse, mishandling, failure to comply with product usage standards, shredder operation using an improper power supply (other than listed on the label), or unauthorized repair. Fellowes reserves the right to charge the consumers for any

additional costs incurred by Fellowes to provide parts or services outside of the country where the shredder is initially sold by an authorized reseller. ANY IMPLIED WARRANTY, INCLUDING THAT OF MERCHANTABILITY OR FITNESS FOR A PARTICULAR PURPOSE, IS HEREBY LIMITED IN DURATION TO THE APPROPRIATE WARRANTY PERIOD SET FORTH ABOVE. In no event shall Fellowes be liable for any consequential or incidental damages attributable to this product. This warranty gives you specific legal rights. The duration, terms, and conditions of this warranty are valid worldwide, except where different limitations, restrictions, or conditions may be required by local law. For more details or to obtain service under this warranty, please contact us or your dealer.

Australia Residents Only:

Our goods come with guarantees that cannot be excluded under the Australian Consumer Law. You are entitled to a replacement or refund for a major failure and for compensation for any other reasonably foreseeable loss or damage. You are also entitled to have the goods repaired or replaced if the goods fail to be of acceptable quality and the failure does not amount to a major failure. The benefits under Fellowes' Warranty are in addition to other rights and remedies under a law in relation to the shredder.