

Datasheet

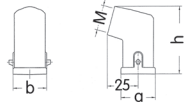
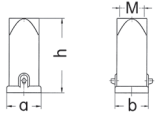
RS Pro A Housing Series

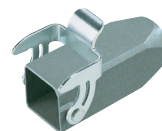
Specifications Hoods:

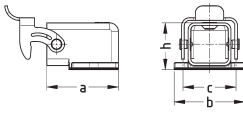
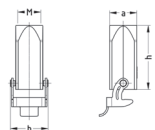
Material	zinc die-cast	Hoods/Housing seal	NBR
Colour	RAL 7036	Limiting temperatures	-40 °C ... +125 °C
Surface	powder-coated	Degree of protection acc.	
Locking element	steel, zinc-plated	to DIN EN 60 529	
Lever type	metal	for coupled connector	IP44


Hood, side entry

Hood, top entry

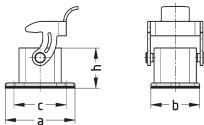
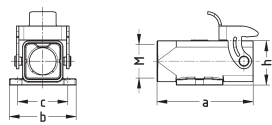
	Hood, side entry					Hood, top entry				
Drawing Dimensions in mm										
	a	b	h	M	Part number	a	b	h	M	Part number
RS Pro 3A	28	27	54.3	M20	1715690	28	27	60	M20	1715689


Bulkhead-mounted housing

Cable to cable housing, top entry

	Bulkhead-mounted housing					Surface mounted housing				
Drawing Dimensions in mm										
	a	b	c	h	Part number	a	b	h	M	Part number
RS Pro 3A	41	40	30	27	1715688	24	34	57	M20	1715691


Bulkhead-mounted housing, angled

Surface mounted housing, open bottom

	Bulkhead-mounted housing					Surface mounted housing					
Drawing Dimensions in mm											
	a	b	c	h	Part number	a	b	c	h	M	Part number
RS Pro 3A	40	28	30	23	1715687	58	40	30	24.5	M20	1715692