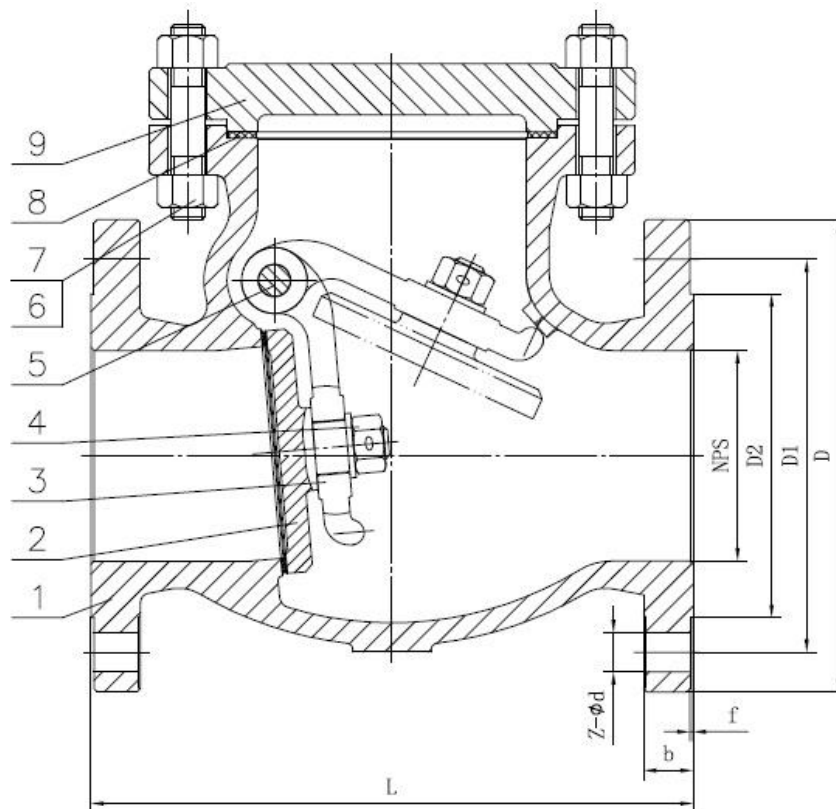


## JIS 10K SS316 Flange End Swing Check Valves

### Features

- Swing Type
- JIS 10K Flange Connection
- Size: 3" - 4" (DN80 - DN100)
- Working Pressure: 10kg/cm<sup>2</sup>
- Material: SS316, SCS14A
- Applicable Medium: General oil, gas & water applications
- Temperature Range: -29°C to 150°C



### Technical Specifications

1. Basic design and manufacture according to JIS B2084
2. Structure length according to JIS B2002
3. Flange ends complied with JIS B2220
4. Inspection and tested according to JIS B2003

Performance Specification Sheet			
Nominal pressure		10K	
Test pressure	Shell test	3.0	MPa
	Seal test	2.2	
	Air seal test	0.4 - 0.7	
Applicable Medium: General oil, gas & water			

## Ordering Information

VL - S - SC - F - 10K - 48  
 I II III IV V VI

### I Type of Item

VL Low Pressure Valves

### II Material Grade

S SS316, CF8M CI Cast Iron  
 FS Forged Steel CS Cast Steel  
 B Brass

### III Item

GA Gate Valve B1 1 PC Ball Valve  
 GL Globe Valve B2 2 PC Ball Valve  
 YS Y-Strainer B3 3 PC Ball Valve  
 SC Swing Check Valve BL 3 Way Ball Valve L Port  
 VC Vertical Check Valve BT 3 Way Ball Valve T Port  
 WC Wafer Check Valve BMF Male x Female Mini Ball Valve  
 DD Dual Disk BU Butterfly Valve

### IV Connection Type

SW S/W G BSPP  
 BW B/W N NPT  
 R BSPT F Flange End  
 W Wafer L Lug

### V Pressure

200 200 PSI 2000 2000 PSI  
 300 300 PSI 150 ANSI 150# Flange Standard  
 600 600 PSI 10K JIS 10K Flange Standard  
 800 800 PSI PN16 PN 16 Flange Standard  
 1000 1000 PSI

### For Inch OD & Inch NB Sizes

#### VI Size

Size	1/8"	1/4"	5/16"	3/8"	1/2"	5/8"	3/4"	1"
Code	02	04	05	06	08	10	12	16
Size	1 1/4"	1 1/2"	2"	2 1/2"	3"	4"	5"	6"
Code	20	24	32	40	48	64	80	96

### VII Coating

(None) No Additional Coating  
 NI Nickel Plating

---

**Material List**

No.	Part Name	Material
1	Body	SCS14A/SS316
2	Disc	SCS14A/SS316
3	Arm	SCS14A/SS316
4	Nut	SS316
5	Hinge Pin	SS316
6	Bolt	SS316
7	Nut	SS316
8	Gasket	PTFE
9	Bonnet	SCS14A/SS316

**Dimension List**

Size	Connection	Impa Code	Part No	NPS	D	D1	D2	L	Z-Ød	b	f	Weight (Kg)
3"	Flange-end	-	VL-S-SC-F-10K-48	80	185	150	126	241	4-Ø19	18	2	21.00
4"	Flange-end	-	VL-S-SC-F-10K-64	100	210	175	151	292	8-Ø19	18	2	36.00

**Part Number Reference**

Impa Code	Part No	Description
-	VL-S-SC-F-10K-48	3"JIS 10K SS316 FLANGE END SWING CHECK VALVE
-	VL-S-SC-F-10K-64	4"JIS 10K SS316 FLANGE END SWING CHECK VALVE