

Conec2 'Pick-and-Click' Modular AV Faceplates

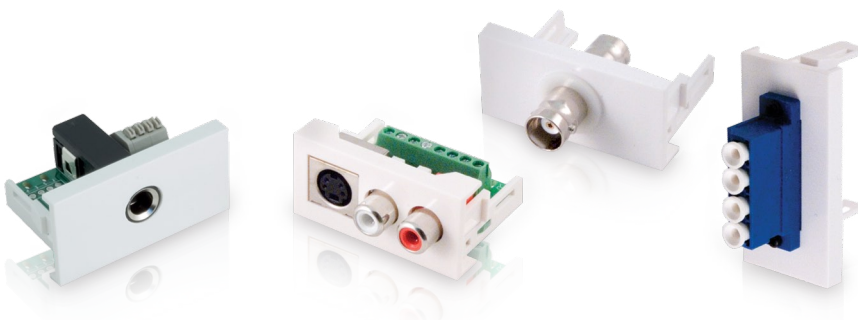
- Flexible combination audio visual faceplates
- Huge range of AV connector modules available
- Simply snap into place
- Easy rear termination via connector, screw terminals or push-down terminals
- Standard UK faceplate sizes
- Pop-up AV Desk Riser Pods



Conec2 is a brand new range of 'snap-in' Audio Visual Faceplate Modules which provide unlimited flexibility for AV, data and communications connectivity.

This new Modular Faceplate range from Clever Little Box provides a huge range of professional, high quality, yet low cost faceplate fittings and AV/data/communications modules, allowing the installer/user to specify and design their own flexible faceplates to meet the unique needs of each individual installation.

Conec2 Snap-in Faceplate Modules are available in a huge range of AV connection options including HDMI, USB, VGA, BNC, Jack, CAT5e, RJ, mains power, plus many more.



The Conec2 AV Faceplate Modules are available in both 50mm and 45mm versions.

The 50mm Modules can be used with a full range of white plastic Faceplates; whereas the 45mm Modules can be used with a stylish range of grey aluminium faceplates and our exclusive range of AV Desk Riser Pods.



45mm **CLB45DP-270A** Conec2 AV Desk Riser Pod, housing 12 x 45x25mm modules

12 Module version of our unique Conec2 AV Desk Riser Pod which, when not in use, the Desk Riser Pod is Flush to the surface. When needed, simply push down and pull up the Riser for full access to your chosen AV connectors.



45mm **CLB45DP-180A** Conec2 AV Desk Riser Pod, housing 8 x 45x25mm modules

8 Module version of our unique Conec2 AV Desk Riser Pod which, when not in use, the Desk Riser Pod is Flush to the surface. When needed, simply push down and pull up the Riser for full access to your chosen AV connectors.



45mm **CLB45SB-45** Aluminium Single Gang Wall Plate, 2 x 45x25mm Modules

The Conec2 CLB45SB-135 is a Single Gang Blank Faceplate 'Shell' designed to accept 2 x 45mm Conec2 AV Connectivity Modules.



45mm **CLB45SB-90** Aluminium Wall Plate, 4 x 45x25mm Modules

The Conec2 CLB45SB-90 is a Blank Faceplate 'Shell' designed to accept 4 x 45mm Conec2 AV Connectivity Modules. (Not standard UK Double-gang width)



45mm **CLB45SB-135** Aluminium Triple Gang Wall Plate, 6 x 45x25mm Modules

The Conec2 CLB45SB-135 is a Triple Gang Blank Faceplate Shell designed to accept 6 x 45mm Conec2 AV Connectivity Modules.



45mm **CLB45SB-180** Aluminium Quad Gang Wall Plate, 8 x 45x25mm Modules

The Conec2 CLB45SB-180 is a Quad Gang Blank Faceplate Shell designed to accept 8 x 45mm Conec2 AV Connectivity Modules.





50 mm **CLB460A:** Single Gang Wall Plate, 50 x 50 Module

The Conec2 CLB460A is a single-gang Blank Faceplate 'Shell' accepting 2 x 50mm Conec2 snap-in AV Connectivity Modules.



50 mm **CLB460R:** Single Gang Wall Plate, Rolled Top Edge, 50 x 50 Cut-out

The Conec2 CLB460R is a single-gang Blank Faceplate 'Shell' with smooth, rolled edges, accepting 2 x 50mm Conec2 snap-in AV Connectivity Modules.



50 mm **CLB460A1:** Single Gang Wall Plate, 25 x 50 Module

The Conec2 CLB460A1 is a single-gang Blank Faceplate 'Shell' accepting 1 x 50mm Conec2 snap-in AV Connectivity Module.



50 mm **CLB860:** Standard Double Gang Faceplate with 50 x 100mm cut-out

The Conec2 CLB860 is a double-gang Blank Faceplate 'Shell' accepting 4 x 50mm Conec2 snap-in AV Connectivity Modules.



50 mm **CLB860A:** Double Gang Wall Plate 50 x 50 Cut-out

The Conec2 CLB860A is a double-gang Blank Faceplate 'Shell' accepting 2 x 50mm Conec2 snap-in AV Connectivity Modules.



50 mm **CLB860R:** Rolled Double Gang Faceplate with 50 x 100mm cut-out

The Conec2 CLB860R is a double-gang Blank Faceplate 'Shell' with smooth 'rolled edges', accepting 4 x 50mm Conec2 snap-in AV Connectivity Modules.



45 mm **CLB45-5045W:** White 50mm to 45mm Face Plate Reducing Module

The Conec2 CLB45-5045W is a White, 50mm to 45mm Faceplate Reducing Module which allows Conec2 45mm Modules to be fitted into the Conec2 50mm Faceplate range (i.e. standard Conec2 50mm plastic faceplates).





50 mm **CLB50-HDMI-90-F/F:** HDMI F to HDMI F Coupler 90 deg



45 mm **CLB45-HDMI-90-F/F:** HDMI F to HDMI F Coupler 90 deg

This Conec2 unit is a HDMI Coupler Snap-in Module featuring HDMI (female) connector on the front of the module and HDMI (female) fitted at 90 degree angle to the rear.



50 mm **CLB50-HDMI-180-F/F:** HDMI F/F Coupler



45 mm **CLB45-HDMI-180-F/F:** HDMI F/F Coupler

This Conec2 unit is a HDMI Coupler Snap-in Module featuring HDMI (female) connector on the front of the module and HDMI (female) to the rear.



50 mm **CLB50-HDMI-T:** Screwless HDMI module



45 mm **CLB45-HDMI-T:** Screwless HDMI module

This Conec2 unit is a Snap-in Module featuring HDMI (female) connector on the front of the module and screwless 'push-down' terminals to the rear.



50 mm **CLB50-VGA:** VGA to Screw Terminal

45 mm **CLB45-VGA:** VGA to Screw Terminal

This Conec2 unit is a Snap-in Module featuring female VGA Connector on the front of the module and screw terminals to the rear.



45 mm **CLB45-VGA-15:** Full Connection VGA to Screwless Terminals

This Conec2 unit is a Snap-in Module featuring female VGA Connector on the front of the module and screwless push-down terminals to the rear. Full 15-pin wired VGA.



50 mm **CLB50-VGA-16:** VGA to Screw Terminal 16 position

45 mm **CLB45-VGA-16:** VGA to Screw Terminal 16 position

This Conec2 unit is a Snap-in Module featuring female VGA Connector on the front of the module and screw terminals to the rear.



50 mm **CLB50-USB:** USB A 2.0 to Screw Terminal



45 mm **CLB45-USB:** USB A 2.0 to Screw Terminal

This Conec2 unit is a Snap-in Module featuring USB (A) 2.0 female connector on the front of the module and screw terminals to the rear.



50 mm **CLB50-USB-3.0:** USB A 3.0 to Screwless Terminal



45 mm **CLB45-USB-3.0:** USB A 3.0 to Screwless Terminal

This Conec2 unit is a Snap-in Module featuring USB (A) 3.0 connector on the front of the module and screwless 'push-down' terminals to the rear.



50 mm **CLB50-USBA-90-F/F:** USB A Coupler Module 90 deg



45 mm **CLB45-USBA-90-F/F:** USB A Coupler Module 90 deg

This Conec2 unit is a USB(A) Coupler Snap-in Module featuring USB (female) connector on the front of the module and USB (female) fitted at 90 degree angle to the rear.



50 mm **CLB50-USBA-180-F/F:** USB A Coupler Module



45 mm **CLB45-USBA-180-F/F:** USB A Coupler Module

This Conec2 unit is a USB(A) Coupler Snap-in Module featuring USB (female) connector on the front of the module and USB (female) to the rear.



50 mm **CLB50-USBA/MINI-90-F/F:** USB A to mini USB A Coupler Module 90 deg



45 mm **CLB45-USBA/MINI-90-F/F:** USB A to mini USB A Coupler Module 90 deg

This Conec2 unit is a USB Coupler Snap-in Module featuring USB (A) connector on the front of the module and Mini USB (A) fitted at 90 degree angle to the rear.



50 mm **CLB50-USBA/MINI-180-F/F:** USB A to mini USB A Coupler Module



45 mm **CLB45-USBA/MINI-180-F/F:** USB A to mini USB A Coupler Module

This Conec2 unit is a USB Coupler Snap-in Module featuring USB (A) connector on the front of the module and Mini USB (A) to the rear.



50 mm **CLB50-2RCA:** 2 x Phono to Screw Terminal

45 mm **CLB45-2RCA:** 2 x Phono to Screw Terminal

This Conec2 unit is a Snap-in Module featuring 2 x RCA Phono Connectors on the front of the module and screw terminals to the rear.



50 mm **CLB50-3RCA-AV:** 3 x Phono to Screw Terminal

45 mm **CLB45-3RCA-AV:** 3 x Phono to Screw Terminal

This Conec2 unit is a Snap-in Module featuring 3 x RCA Phono Connectors on the front of the module and screw terminals to the rear.



50 mm **CLB50-3RCA-CP:** 3 x Phono RCA Connector input to Component Video out 50mm

45 mm **CLB45-3RCA-CP:** 3 X Phono RCA Connector input to Component Video out 45mm

This Conec2 unit is a Snap-in AV Module featuring 3 x RCA connectors (Red / Blue / Green) on the front of the module and Component Video via screw terminals to the rear.



50 mm **CLB50-SV+2RCA:** S-Video & RCA Stereo Audio Module

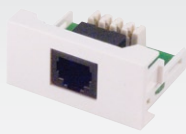
45 mm **CLB45-SV+2RCA:** S-Video & RCA Stereo Audio Module

This Conec2 unit is a Snap-in Module featuring 1 x S-Video and 2 x RCA Phono Connectors on the front of the module and screw terminals to the rear.



50 mm **CLB50-TV:** TV Aerial to Screw Terminal

The Conec2 CLB50-TV is a 50mm Snap-in Module featuring 1 x Coax TV Aerial Connector to the front and Screw Terminals to the rear.



50 mm **CLB50-4K-C3:** 1 x Voice Module with RJ11 Connector

45 mm **CLB45-4K-C3:** 1 x Voice Module with RJ11 Connector

This Conec2 unit is a Snap-in Module featuring 1 x Voice RJ11 Connector on the front of the Module and Krone IDC Block to the rear.



50 mm **CLB50-8K-C5E:** 1 x CAT5e to Krone IDC Block

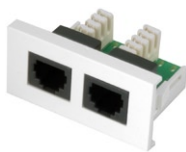
45 mm **CLB45-8K-C5E:** 1 x CAT5e to Krone IDC Block

This Conec2 unit is a Snap-in Module featuring 1 x CAT5e RJ45 Connector on the front of the Module and Krone IDC Block to the rear.



50 mm **CLB50-88K-C5E-PA:** 1 in 2 out- CAT5e RJ45 Splitter into Krone IDC Block

The Conec2 CLB50-88K-C5E-PA is a 50mm Snap-in Module featuring 2 x CAT5e RJ45 Connectors on the front of the module and Krone IDC Block to the rear. This provides a 1 in, 2 out CAT5e Splitter module.



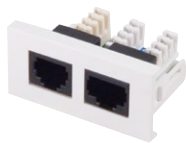
50 mm **CLB50-44K-C3:** 2 x RJ12 to Krone IDC Block

The Conec2 CLB50-44K-C3 is a 50mm snap-in Module featuring 2 x RJ12 Sockets on the front of the Module and Krone IDC Block to the rear.



50 mm **CLB50-88K-C3:** 1 in 2 out CAT5e RJ45 Splitter from Krone IDC Block

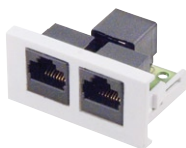
The Conec2 CLB50-88K-C3 is a 50mm Snap-in Module featuring 2 x CAT5e RJ45 Connectors on the front of the Module and Krone IDC Block to the rear.



50 mm **CLB50-84K-C5E:** 1 x Data, 1 x Voice to Krone IDC Block

45 mm **CLB45-84K-C5E:** 1 x Data, 1 x Voice to Krone IDC Block

This Conec2 unit is a Snap-in Module featuring 1 x Data and 1 x Voice RJ Connector on the front of the Module and Krone IDC Block to the rear.



50 mm **CLB50-88-C5E-PA:** 1 in 2 out - CAT5e RJ45 Splitter into RJ45 Jack

45 mm **CLB45-88-C5E-PA:** 1 in 2 out - CAT5e RJ45 Splitter into RJ45 Jack

This Conec2 unit is a Snap-in Module featuring 2 x CAT5e RJ45 Connectors on the front of the module and 1 x CAT5e RJ45 Connector to the rear. This provides a 1 in, 2 out CAT5e Splitter module.



50 mm **CLB50-88K-C6:** 2 x CAT6 to Krone IDC Block

The Conec2 CLB50-88K-C6 is a 50mm Snap-in Module featuring 2 x CAT6e RJ45 Connectors on the front of the Module and Krone IDC Block to the rear.



50 mm **CLB50-100BT:** 100BaseT Splitter RJ45 Y Adapter Module

45 mm **CLB45-100BT:** 100BaseT Splitter RJ45 Y Adapter Module

This Conec2 unit is a Snap-in AV Module featuring 100BaseT Splitter via 2 x RJ45 connectors on the front of the module and 1 x RJ45 connector to the rear.



45 mm **CLB45-8K-C6E:** CAT6 Data Module 8p8c

The Conec2 CLB45-8K-C6E is a 45mm Snap-in Module featuring 1 x CAT6 RJ45 Connector on the front of the Module and Krone IDC Block to the rear.



50mm **CLB50-MIC:** 6.5mm Stereo Jack Socket Mic / Line, 50mm Conec2 Module

45mm **CLB45-MIC:** 6.5mm Stereo Jack Socket Mic / Line, 45mm Conec2 Module

This Conec2 unit is a snap-in Module featuring 1 x 6.5mm (1/4 inch) jack socket for connecting microphones / audio lines. Features screwless terminals to the rear.



50mm **CLB50-PHJ:** 3.5mm Audio Connector to Screw Terminal

45mm **CLB45-PHJ:** 3.5mm Audio Connector to Screw Terminal

This Conec2 unit is a Snap-in Module featuring 3.5mm Stereo Audio Connector to the front of the Module and screw terminals to the rear.



50mm **CLB50-SV+PHJ:** S-Video & 3.5mm Stereo Audio Module

45mm **CLB45-SV+PHJ:** S-Video & 3.5mm Stereo Audio Module

This Conec2 unit is a Snap-in Module featuring S-Video Connector and 3.5mm Stereo Audio Connector to the front of the Module and screw terminals to the rear.



50mm **CLB50-RF:** RF Coaxial Connector thru' Coupler

45mm **CLB45-RF:** RF Coaxial Connector thru' Coupler

This Conec2 unit is a Snap-in Module featuring RF Coaxial connector on the front and rear of the module.



50mm **CLB50-BB:** Banana Socket to Banana Socket Coupler

45mm **CLB45-BB:** Banana Socket to Banana Socket Coupler

This Conec2 unit is a Banana Socket Coupler Snap-in Module featuring 2 x Banana Socket on the front and rear of the module.



50mm **CLB50-2ST-ST-SM-CE:** Fiber 2 x ST Simplex Coupler

The CLB50-2ST-ST-SM-CE is a 50mm snap-in Conec2 Module featuring 2 x Fiber ST Connector to both front and rear for Simplex coupling of fiber cables.



50mm **CLB50-LC-DUSCA-CE:** Fiber 2 x LC Duplex Coupler

The CLB50-LC-DUSCA-CE is a 50mm snap-in Conec2 Module featuring 2 x LC Fiber Connectors to both front and rear, providing Duplex coupling of fiber cables.



50mm **CLB50-LC-4-SCT:** Fiber 4 x LC Coupler

The CLB50-LC-4-SCT is a 50mm snap-in Conec2 Module featuring 4 x Fiber LC Connectors to both front and rear for coupling of fiber cables.



50mm **CLB50-2SC-SC-SM-CE:** Fiber SC Simplex Coupler

The CLB50-2SC-SC-SM-CE is a 50mm snap-in Conec2 Module featuring single Fiber SC Connector to both front and rear for Simplex coupling of fiber cables.



50mm **CLB50-2SC-SC-DU-CE:** Fiber 2 x SC SC Duplex Coupler

The CLB50-2SC-SC-DU-CE is a 50mm snap-in Conec2 Module featuring 2 x Fiber SC Connectors to both front and rear for duplex coupling of fiber cables.



50 mm **CLB50-SP: 2 x Speaker Coupler L-R**

45 mm **CLB45-SP: 2 x Speaker Coupler L-R**

This Conec2 unit is a Snap-in Module featuring 2 x Loudspeaker Coupler Binding Posts to front and rear.



50 mm **CLB50-BNC/BNC: BNC-BNC 50 x 25mm Plate**

45 mm **CLB45-BNC/BNC: BNC-BNC 45 x 25mm Plate**

This Conec2 unit is a Snap-in Module featuring 1 x BNC Coupler to front and rear for thru' coupling.



50 mm **CLB50-2BNC/BNC: 2 x BNC-BNC 50 x 25mm Plate**

45 mm **CLB45-2BNC/BNC: 2 x BNC-BNC 45 x 25mm Plate**

This Conec2 unit is a Snap-in Module featuring 2 x BNC Couplers to front and rear for thru' coupling.



50 mm **CLB0350-UK: UK Power Socket Module, 50 x 50mm**

45 mm **CLB0345-UK: UK Power Socket Module, 45 x 45mm**

This Conec2 unit is a Snap-in Module featuring UK 3-Pin Power Socket. Simply snaps into place in Conec2 Faceplates and Desk Riser Pods.



50 mm **CLB50-B: Blank Module - 50 x 25mm**

45 mm **CLB45-B: Blank Module - 45 x 25mm**

This Conec2 unit is a Snap-in Blank Filler Module.



50 mm **CLB50-HO-1: 3.5mm Cut-out 50 x 25mm Blank**

45 mm **CLB45-HO-1: 3.5mm Cut-out 45 x 25mm Blank**

This Conec2 unit is a Snap-in Blank Filler Module with 3.5mm Jack Socket Cut-out hole.



50 mm **CLB50-HO-2: Phono Cut-out 50 x 25mm Blank**

45 mm **CLB45-HO-2: Phono Cut-out, 45 x 25mm Blank**

This Conec2 unit is a Snap-in Blank Filler Module with 1 x Phono Socket Cut-out hole.



50 mm **CLB50-HO-3: BNC Cut-out 50 x 25mm Blank**

45 mm **CLB45-HO-3: BNC Cut-out 45 x 25mm Blank**

This Conec2 unit is a Snap-in Blank Filler Module with BNC Cut-out hole.



50 mm **CLB50-HO-3RCA: 3 x Phono Cut-Out 50 x 25mm Blank**

This Conec2 unit is a Snap-in Blank Filler Module with 3 x RCA Socket Cut-out holes.