

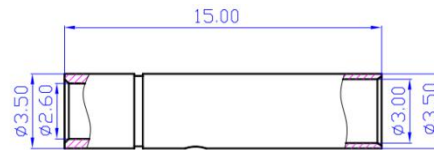


Datasheet

RS PRO GC3010 3.0mm Banana Female connector

Stock number: 180-5408

EN



Section

Material & Parameter

Recommend USE: Motor/controller
Metal Material: Brass Gold Plated
Use Times: 2000 TIMES
Cable Spec: 16AWG

Contact Resistance: 0.8mΩ
Rated Current: 20A
Momentary Current: 40A

Remark: Data sheet will change according with the test background