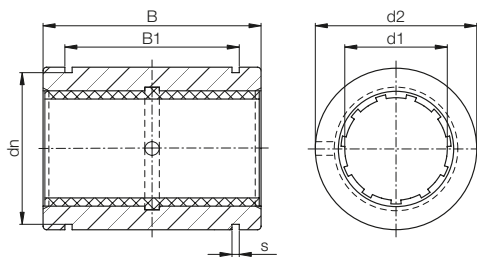


drylin® R linear bearings | Product range

Closed, anodised aluminium adapter



Order key



Type Size

R J U M-01-10

Closed	iglidur® J	Liner	Metric	Standard	d1
--------	------------	-------	--------	----------	----

● Secured by circlips



⁷⁸⁾ According to igus® testing method ► Page 1038

⁸¹⁾ $\varnothing < 10$ mm use iglidur® JSM sleeve bearings

⁸²⁾ Design standards ► Page 980

Please note: installation instructions ► Page 981

Dimensions [mm]

d1	d2	B	B1	s	dn	Part No.
	h7	h10	H10	H10	h10	
5	12	22	14.2	1.10	11.5	RJZM-01-05 ⁸¹⁾
6	12	22	14.2	1.10	11.5	RJZM-01-06 ⁸¹⁾
8	16	25	16.2	1.10	15.2	RJZM-01-08 ⁸¹⁾
10	19	29	21.6	1.30	17.5	RJUM-01-10
12	22	32	22.6	1.30	20.5	RJUM-01-12
16	26	36	24.6	1.30	24.2	RJUM-01-16
20	32	45	31.2	1.60	29.6	RJUM-01-20
25	40	58	43.7	1.85	36.5	RJUM-01-25
30	47	68	51.7	1.85	43.5	RJUM-01-30
40	62	80	60.3	2.15	57.8	RJUM-01-40
50	75	100	77.3	2.65	70.5	RJUM-01-50
60	90	125	101.7	3.15	86.5	RJUM-01-60

Technical data

Part No.	d1-Tolerance ⁷⁸⁾	F max. dynamic ⁸²⁾	F max. static ⁸²⁾	Weight
		p = 5 MPa	p = 35 MPa	
	[mm]	[N]	[N]	
RJZM-01-05 ⁸¹⁾	+0.025 +0.060	525	3,675	5
RJZM-01-06 ⁸¹⁾	+0.025 +0.060	525	3,675	5
RJZM-01-08 ⁸¹⁾	+0.032 +0.070	960	6,720	9
RJUM-01-10	+0.030 +0.088	725	5,075	14
RJUM-01-12	+0.030 +0.088	960	6,720	21
RJUM-01-16	+0.030 +0.088	1,440	10,080	28
RJUM-01-20	+0.030 +0.091	2,250	15,750	49
RJUM-01-25	+0.030 +0.091	3,625	25,375	108
RJUM-01-30	+0.040 +0.110	5,100	35,700	162
RJUM-01-40	+0.040 +0.115	8,000	56,000	334
RJUM-01-50	+0.050 +0.130	9,000	87,500	579
RJUM-01-60	+0.050 +0.140	12,000	120,000	1,070