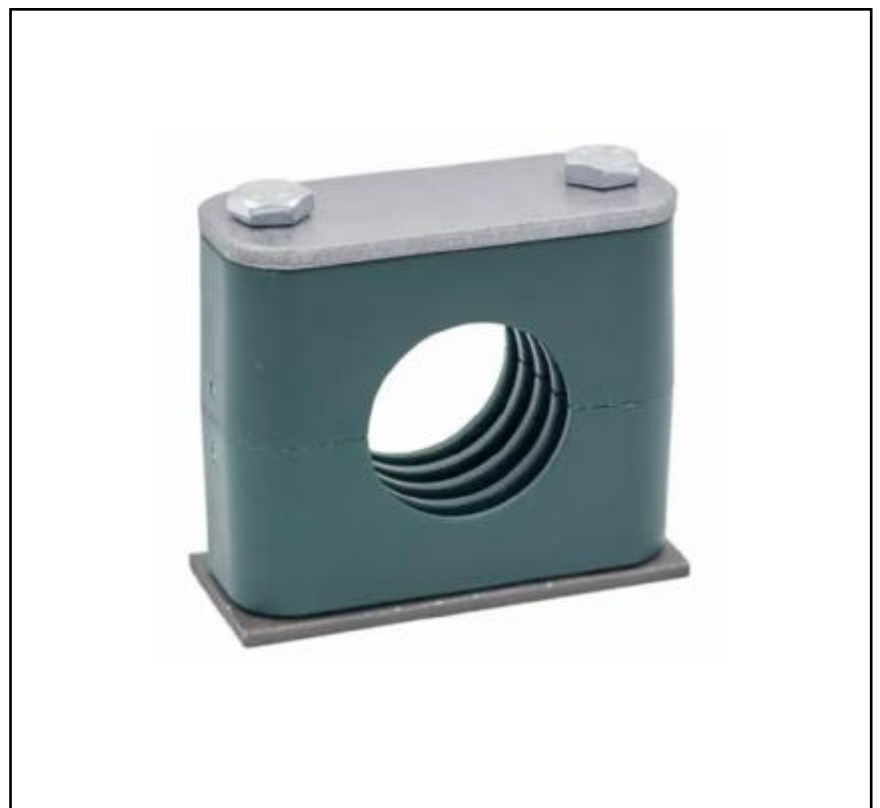


Features

- Reset capability
- High-tensile strength
- High abrasion resistance
- Resistant to cold
- DIN 3015
- Operating temperature range - 30°C to 90°C
- Polypropylene clamp body with steel weld plate, zinc plated steel top plate and steel clamp screws

RS PRO Hydraulic Pipe Clamps

RS Stock No.: 145-9752



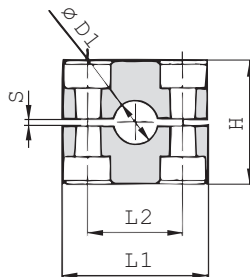
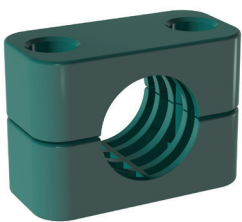
RS Professionally Approved Products bring to you professional quality parts across all product categories. Our product range has been tested by engineers and provides a comparable quality to the leading brands without paying a premium price.

Product Description

RS PRO Tube Clamps, designed to enable fixing of straight and bent, tubes and hoses. The clamp body is a square/open design with a ribbed bore enabling secure fixing while ensuring a high degree of sound deadening and vibration damping. Ideal for normal mechanical stress, they are available as a single or twin tube clamp in standard sizes for nominal mechanical requirements.

Clamp Body(One clamp body is consisting of two clamp halves)

Kit consists of	1 x Clamp Body 1 x Weld Plate 1 x Cover Plate 2 x Hexagon Head Bolt
Exact outside diameter Ø D1 (mm)	6
Material code (see below)	PP
Colour	Green



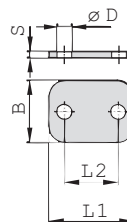
Product Features

1. Proven, tested and trusted product in various markets Recommended for the safe installation of rigid pipes and tubes
2. Available for all commonly used pipe and tube outside diameters
3. Environmental protection due to vibration/noise reducing design
4. Excellent weathering resistance, even under extreme conditions

DIN	Outside Diameter Pipe / Tube Ø D1		(2 Clamp Halves) Material)	Dimensions (mm/m)				
	(mm)	(in)		L1	L2	H	S min.	Width
1	6		PP	37	20	27	0,4	30

Cover Plate

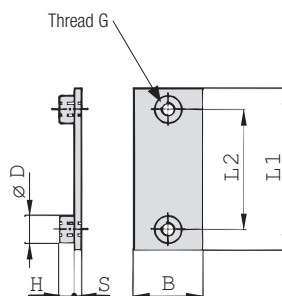
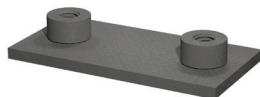
Cover Plate	DP
Material code	Carbon Steel, zinc/nickel-plated



Group	DIN	Dimensions (mm/in)				
		L1	L2	B	S	ØD
1A	1	34	20	30	3	7
		1.34	.79	1.18	.12	.28

Weld Plate

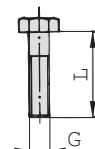
Single Weld Plate	SP
Thread code	Metric ISO thread
Material code	Carbon Steel, phosphated



DIN	Thread G	Dimensions (mm/in)					
		L1	L2	B	S	H	ØD
1	M6	36	20	30	3	6,5	12

Hexagon Head Bolt (for Use with Cover Plate DP)

Type of bolt	Hexagon Head Bolt (according to DIN 931 / 933 or ANSI / ASME B18.2.1.)
Thread type and size	acc. to dimension table
Material code	Carbon Steel, zinc/nickel-plated



Hexagon Head Bolt AS (according to DIN 931 / 933 or ANSI / ASME B18.2.1.)
Dimensions applicable only when used with Cover Plate DP

DIN	Dimensions (mm/in) Thread G x L
0	M6 x 30