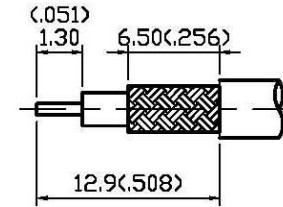
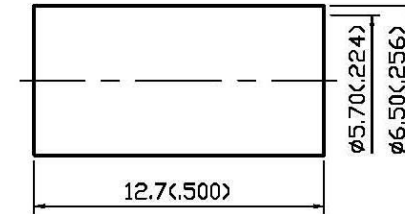
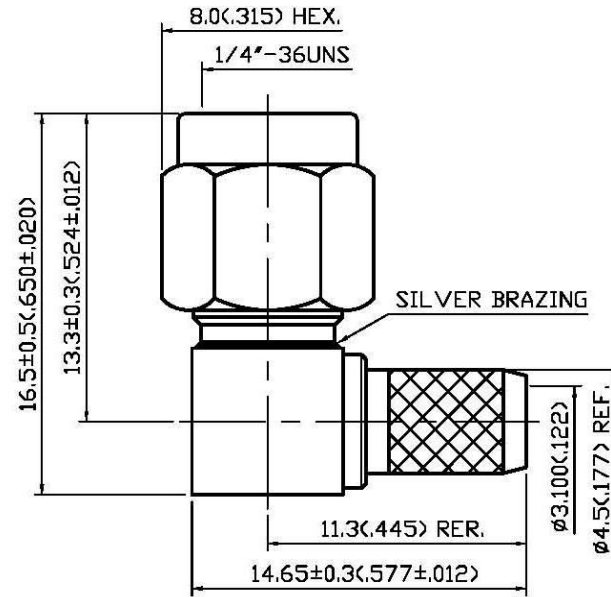


| NO | DESCRIPTION  | DATE      |
|----|--|-----------|
| ⚠  | WORKING VOLTAGE<br>→ VOLTAGE RATING<br>DEL PROOF VOLTAGE | 02.04.13' |



STRIPPING DIMENSION

**1.0 ELECTRICAL**

- 1.1 FREQUENCY RANGE: DC-12.4 GHz
- 1.2 NOMINAL IMPEDANCE: 50 OHMS
- 1.3 VOLTAGE RATING: 500 VOLTS MAX. ⚠
- 1.4 VSWR: 1.23 MAX.

**2.0 MATERIALS**

- 2.1 BODIES: BRASS PER JIS-C3604
- 2.2 CENTER CONTACT: BRASS PER JIS-C3604
- 2.3 INSULATION: TEFLON PER ASTM D1457 AND ASTM D1710
- 2.4 CRIMP FERRULE: BRASS PER JIS-C2700

**3.0 FINISHES AND OTHERS**

- 3.1 SEE BELOW TABLE FOR DETAILS.

**4.0 MECHANICAL**

- 4.1 INTERFACE IN ACCORDANCE WITH: MIL-STD-348A
- 4.2 FOR USE WITH RG142U OR SIMILAR STYLE CABLE
- 4.3 CABLE ATTACHMENT: OUTER: CRIMP, INNER: SOLDER
- 4.4 RECOMMENDED COUPLING TORQUE: 3 TO 5 in-lbs
- 4.5 CRIMP SIZE REQUIRED: FERRULE: 5.6(.221) HEX. CRIMP TOOL

**5.0 ENVIRONMENTAL**

- 5.1 OPERATING TEMPERATURE RANGE: -65° C TO +165° C

| NO | DESCRIPTION    | MATERIAL        | Q'TY | FINISH         |
|----|----------------|-----------------|------|----------------|
| 9  | CRIMP FERRULE  | BRASS           | 1    | GOLD           |
| 8  | SHELL          | BRASS           | 1    | GOLD 3μ" MIN.  |
| 7  | GASKET         | SILICONE        | 1    | RED            |
| 6  | WASHER         | STAINLESS STEEL | 1    | NONE           |
| 5  | INSULATION I   | TEFLON          | 1    | NONE           |
| 4  | BODY II        | BRASS           | 1    | GOLD 3μ" MIN.  |
| 3  | CENTER CONTACT | BRASS           | 1    | GOLD 50μ" MIN. |
| 2  | BODY I         | BRASS           | 1    | GOLD 3μ" MIN.  |
| 1  | CAP            | BRASS           | 1    | GOLD 3μ" MIN.  |



APPROVED by \_\_\_\_\_ DATE: \_\_\_\_\_

| DESCRIPTION |          | SMA RIGHT ANGLE PLUG CRIMP |      |                    |        |         |         |       |       |
|-------------|----------|----------------------------|------|--------------------|--------|---------|---------|-------|-------|
| 製圖          | DRAWN    | TOLERANCE                  | 品名   | 19-02-4 T.G.G 142U | 日期     | DATE    | 版次      | REV.  | TITLE |
|             | Yoko     |                            |      |                    |        |         |         |       |       |
| 檢圖          | CHECK    | XXX                        | ±0.1 | 單位                 | mm(in) | DWG.NO. | 19-0205 | SCALE | 比例    |
|             | Arc      |                            |      |                    |        |         |         |       |       |
| 認定          | APPROVAL | ANGLE                      | ±5°  |                    |        |         |         |       |       |
|             | Angela   |                            |      |                    |        |         |         |       |       |